



BEVERAGE-AIR

Project: _____	AIA# _____
Item: _____	
Location: _____	SIS# _____
Approved: _____	

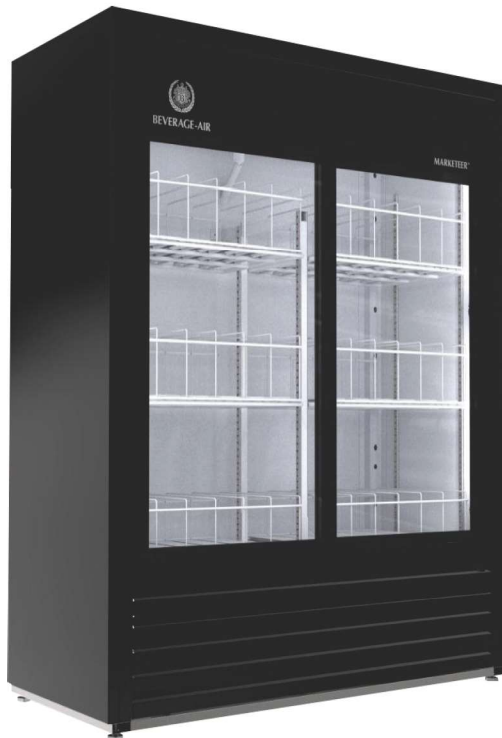
MARKETEER™ MERCHANDISERS

MT41-54 Black Sliding Door Model

Hydrocarbon Series

MODEL:

MT41-54-1-SDB



3 Year Parts/Labor Warranty

5 Year Compressor Warranty

CABINET CONSTRUCTION

- Standard cabinet exterior finish is prepainted black steel
- Heavy duty interior construction includes prepainted white steel
- Mechanical temperature control
- Modern one piece grille
- Double pane lowE argon filled glass door feature outside pane that is tempered for added safety
- Self-closing sliding glass doors, black door frames regardless of exterior color
- Pocket door handles
- LED lighting
- Six (6) epoxy coated shelves
- Leveling feet

OPTIONS & ACCESSORIES

- Extra shelves and clips
- 3" Casters

REFRIGERATION SYSTEM

- Uses environmentally friendly, energy efficient R290 refrigerant, and meets all regulatory requirements for CARB, SNAP, DOE & more
- Condenser is designed to be low maintenance, and energy efficient
- Automatic, non-electric defrost
- Epoxy coated evaporator coil
- Maintains product temperatures between 32°F and 44.6°F

MT41-54™ MERCHANDISER: SLIDING DOOR MODEL



Please verify qualifying units by visiting:
www.energystar.gov/cfs

3779 Champion Blvd., Winston-Salem, NC 27105
1-888-845-9800 Fax: 1-336-245-6453
Beverage-Air.com Sales@bevair.com



BEVERAGE-AIR.

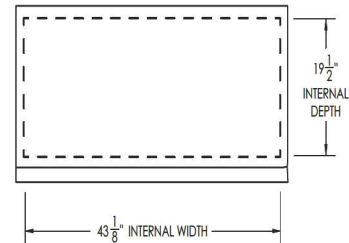
MODEL	MT41-54-1-SDB
EXTERNAL DIMENSIONAL DATA	
Width Overall	47 1/4"
Depth Overall	21 3/4"
Height Overall	54 1/8"
Number of Doors	2
INTERNAL DIMENSIONAL DATA	
NET Capacity (cubic ft.)	19.5
Capacity 20 oz	180
Internal Width Overall (in)	43 1/8"
Internal Depth Overall (in)	19 1/2"
Internal Height Overall (in)	40 1/4"
Internal Height Useable (in)	31 7/8"
Number of Shelves	6
ELECTRICAL DATA	
Full Load Amperes 115/60/1	3.1
REFRIGERATION DATA	
Horsepower	1/4
Energy Consumption	1.710 Kwh / 24h
Capacity (BTU/Hr)	1900
Heat Rejection (BTU/Hr)	2850
Charge (lbs/grams/ounces)	0.1102 / 50 / 1.76
WEIGHT DATA	
Gross Weight - Crated	289 lbs
Height - Crated	58"
Width - Crated	51"
Depth - Crated	27"

We reserve the right to change specifications and product design without notice. Such revisions do not entitle the buyer to corresponding changes, improvements, additions or replacements for previously purchased equipment. Dimensional tolerances +/- 1/4". Metric dimensions (MM).

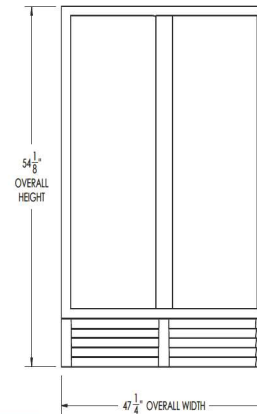
Glass Sliding Door Model Model: MT41-54-1-SDB

Model Views

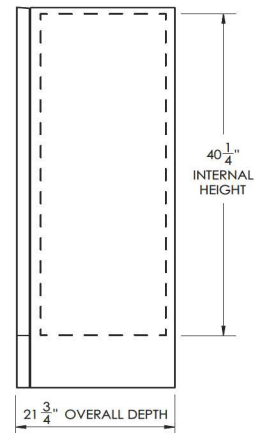
Required Clearance: 4" Top, Bottom, Rear, & Sides



PLAN VIEW



ELEVATION VIEW



SIDE VIEW

ELECTRICAL CONNECTION



115/60/1
NEMA 5-15P

Unit pre-wired at factory and include 8' long cord and plug set.

