



# BEVERAGE-AIR®

|                 |            |
|-----------------|------------|
| Project: _____  | AIA# _____ |
| Item: _____     |            |
| Location: _____ | SIS# _____ |
| Approved: _____ |            |

MMF23HC GLASS DOOR MERCHANDISER SEVRIES

## MARKETMAX FREEZER

MMF23HC Black Hinged Single Glass Door  
Hydrocarbon Series

MODEL:  
MMF23HC-1-B



**7 Year Parts/Labor Warranty**  
**7 Year Compressor Warranty**

### CABINET CONSTRUCTION

- Exterior features durable black painted steel
- Heavy-duty interior construction includes white coated steel walls
- Modern one-piece grille
- Full electronic control
- Freezers have triple pane lowE argon filled glass door
- Self-closing door with 120° stay-open feature
- Snap-in gaskets, easy to remove for cleaning or replacement
- LED lighting
- Brightly lit sign panel
- Five (5) heavy-duty epoxy coated wire shelves
- Four (4) shelf clips included per shelf
- Self-contained bottom mount refrigeration system
- Leveling feet standard

### OPTIONS & ACCESSORIES

- Stainless steel or white exterior
- Stainless steel or black interior
- Left door hinged (at time of order)
- Shelves black or white
- Shelf clips
- Flow track
- Gravity track
- Price tag molding
- Electronic lock models (swing doors only)
- 3" or 6" Casters
- 6" Legs or seismic/flanged legs
- Door lock
- Custom signage & decals
- Remote option\* (see note on back on page)

### REFRIGERATION SYSTEM

- Uses environmentally friendly, energy efficient R290, and meets all regulatory requirements for CARB, SNAP, DOE & more
- Electric defrost with hot gas condensate evaporation
- Epoxy coated evaporator coil
- Freezer capable of maintaining product temperatures down to -10°F



Please verify qualifying units by visiting:  
[www.energystar.gov/cfs](http://www.energystar.gov/cfs)

3779 Champion Blvd., Winston-Salem, NC 27105  
1-888-845-9800 Fax: 1-336-245-6453  
Beverage-Air.com Sales@bevair.com



# BEVERAGE-AIR®

| MODEL                            | MMF23HC-1-B        |
|----------------------------------|--------------------|
| <b>EXTERNAL DIMENSIONAL DATA</b> |                    |
| Width Overall                    | 27 1/4"            |
| Depth Overall with Handle        | 33 1/2"            |
| Height Overall                   | 78 1/8"            |
| Number of Doors                  | 1                  |
| Depth with Door Open 90°         | 57 3/8"            |
| Door Opening (in)                | 24 1/8" x 52 3/4"  |
| <b>INTERNAL DIMENSIONAL DATA</b> |                    |
| NET Capacity (cubic ft.)         | 23.32              |
| Internal Width Overall (in)      | 24 1/4"            |
| Internal Depth Overall (in)      | 28 1/2"            |
| Internal Height Overall (in)     | 61 3/4"            |
| Internal Height Useable (in)     | 55"                |
| Number of Shelves                | 5                  |
| <b>ELECTRICAL DATA</b>           |                    |
| Full Load Amperes 115/60/1       | 6.34               |
| <b>REFRIGERATION DATA</b>        |                    |
| Horsepower                       | 3/4                |
| Capacity (BTU/Hr)                | 2097               |
| Heat Rejection (BTU/Hr)          | 3145               |
| Charge (lbs/grams/ounces)        | 0.2094 / 95 / 3.35 |
| <b>SHIPPING DATA</b>             |                    |
| Gross Weight - Crated            | 416 lbs            |
| Height - Crated                  | 85"                |
| Width - Crated                   | 30"                |
| Depth - Crated                   | 36"                |

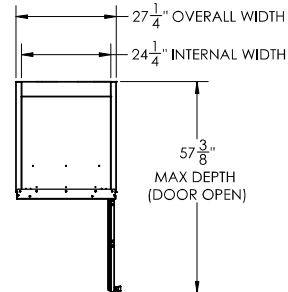
\*NOTE: Remote units are field wired and come with 6" legs.  
Refrigerant must be specified at time of order.

We reserve the right to change specifications and product design without notice.  
Such revisions do not entitle the buyer to corresponding changes, improvements,  
additions or replacements for previously purchased equipment. Dimensional  
tolerances +/- 1/4". Metric dimensions (MM).

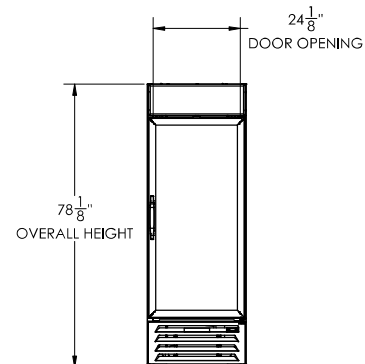
## Glass Door Merchandiser- Hinged Door Model: MMF23HC-1-B

### Model Views

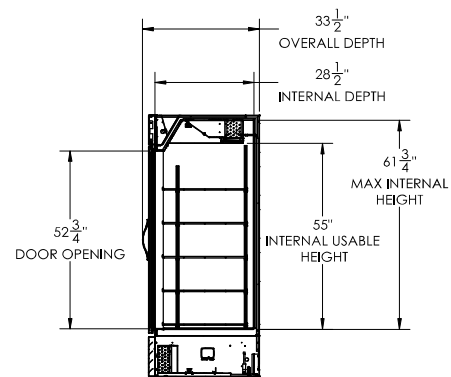
Required Clearance: Rear 3"



### PLAN VIEW



### ELEVATION VIEW



### SIDE VIEW

### ELECTRICAL CONNECTION



115/60/1  
NEMA 5-15P

Unit pre-wired at  
factory and include  
8' long cord and  
plug set.



3779 Champion Blvd., Winston-Salem, NC 27105 1-888-845-9800 Fax: 1-336-245-6453 Beverage-Air.com Sales@beveair.com

