



Project _____

Item 541EC1C Quantity _____

Approval _____ Date _____

MainStreet Equipment EC1-C Single Deck Electric Full Size Convection Oven with Legs - 208V, 3 / 1 Phase, 11 kW

Item #541EC1C

Special Features

- Full size cavity houses 3 adjustable wire racks
- Temperature range from 150 to 500 degrees Fahrenheit
- Independent glass doors with stainless steel exterior and interior
- Features 60 minute timer and interior light controlled by rocker switch
- Field convertible from 3 phase to 1 phase

Technical Data

Width	38 1/8 Inches
Depth	41 1/2 Inches
Height	54 1/8 Inches
Interior Width	29 Inches
Interior Depth	22 1/4 Inches
Interior Height	20 Inches
Amps	32 Amps
Phase	3 Phase
Voltage	208 Volts
Wattage	11 Kilowatts



Certifications



ETL, US & Canada



ETL Sanitation



Hardwired

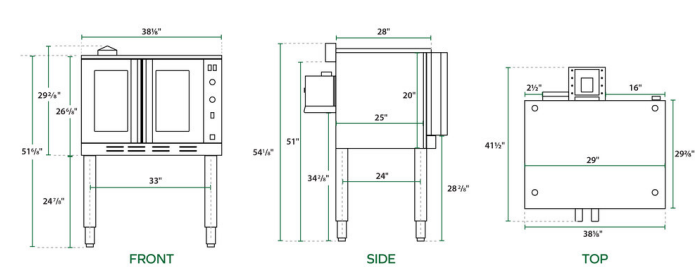


Field Convertible
(Electrical)

Technical Data

Door Type	Glass
Features	Field-Convertible (Electrical)
Installation Type	Freestanding
Number of Decks	Single
Number of Doors	2 Doors
Number of Racks	3 Racks
Oven Interior Style	Standard Depth
Plug Type	Hardwire
Power Type	Electric
Size	Full Size
Temperature Range	150 - 500 Degrees F

Technical Drawing



⚠ WARNING: This product can expose you to chemicals including lead, which are known to the State of California to cause cancer and birth defects or other reproductive harm. For more information, go to www.p65warnings.ca.gov.