



# Configurable Stainless Steel Cabinets with LidSaver™ 3 Lid Dispensers List Prices



Step 1 Select Cabinet Height		
Number of Positions	Code	USD List Price
1 Vertical	K58821	
2 Vertical	K58822	
3 Vertical	K58823	
4 Vertical	K58824	

Step 2 Select components. Add component code for each pocket. Start with bottom pocket.	
Description	Component Type Code
LidSaver 3	L
Cup Dispenser	C
Straw Dispenser	S

Step 3 Assign Component Codes to Positions (See Component Matrices below for specific selections and price)	
Place each component code in a position in the cabinet, from bottom to top.	
4	
3	
2	
1	If selecting a straw pocket, it must be in position 1.

Your Selection  -  -  -  -  -  -  -  =

USD List Price  +  +  +  +  +  +  +  =

**EXAMPLE** Your Selection K58823 - SLC - S1 - AB - A -  = K58823-SLC-S1-AB-A

USD List Price  +  +  +  +  +  +  +  =

## Component Matrices

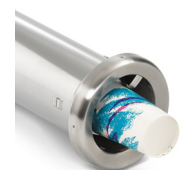
(L) Lid					
Manufacturer Part No.	Code	USD List Price	Manufacturer Part No.	Code	USD List Price
Berry™ DLT1310 Domed	AB		Dart® 32SLR	AQ	
Berry™ DLT1310SS	AC		Dixie® 9542	AR	
Berry™ DLT1402 Domed	AD		Dixie® 955	JY	
Berry™ DLT1402SS	AE		Dixie® TP9542	AS	
Berry™ DLT1408 Domed	AF		Dixie® TP9550	JZ	
Berry™ DLT1408SS	AG		International Paper LCRS 32	AT	
Dart® 16EL	AJ		International Paper LCTS 44	AU	
Dart® 16LCDH	AK		Sweetheart® LGX12R	AY	
Dart® 16RCL	AL		Solo® 626	AZ	
Dart® 16SL	AM		Solo® DL626	BB	
Dart® 20SL	AN		Solo® DLR642	BC	
Dart® 20SLR	AO		Solo® LD16A	BD	
Dart® 32SL	AP				

(C) Cup		
Part No.	Code	USD List Price
INC-80	A	
CADJ-3	D	

(S) Straw (Must be in #1 position)		
Part No.	Code	USD List Price
S1	S	



INC-80



CADJ-3

Additional lids are available. Find the full Dispenser Code Lookup Tables file on Vollrath.com

Dart, Solo and Sweetheart are registered trademarks of Dart Container Corporation. Berry is a trademark of Berry Plastics Corporation. Dixie is a registered trademark of Georgia-Pacific. International Paper is a registered trademark of International Paper.

**NOTE:** LidSaver™ items are custom products and are non-returnable.