

LARGE BEARING SLIDE RACKS & BASES



Model
303B-15.75-95



Model
305B-95



Model
309B-95



Model
303B-16.75-95



Model
321B-95



Model
321B-95-DR



Model
304-95

Heavy Duty Bearing Slide Rack (Holds Large Compartment Boxes)

- Sturdy construction using prime cold-rolled steel
- Each cradle holds up to 75 Lbs.
- Solid cradle extends beyond the opening of the unit when in the open position reducing the chance of drawer covers closing when not intended
- Slides can be replaced
- Positive closure feature keeps trays from sliding out unintentionally
- Punched holes for easy installation of locking hinge (locking hinge not included)
- -DR model includes door and lock with 2 keys
- Base is available as accessory
- Durable, textured, gray powder coat finish

Model	Overall Dim: WxDxH (In.)	Compartments	Carton Pack	Ship Wt. (Lbs.)
303-95	20 x 15-5/8 x 15	4	1	30
303B-15.75-95	20-5/16 x 15-7/8 x 15	4	1	40
309B-95	20-3/16 x 12-5/8 x 8-1/8	2	40*	20
310B-95	20-5/16 x 12-5/8 x 14-7/8	4	1	34
305B-95	20-1/2 x 12-1/2 x 21	5	1	48
321B-95	20-5/16 x 15-7/8 x 21-7/8	6	1	57
321B-95-DR	20-5/16 x 15-7/8 x 21-7/8	6 with locking door	1	62
Optional Bases				
304-95	20-9/16 x 16-1/8 x 15	For Models 302B-15.75, 303B-15.75, 321B	1	16
304-95-5.75/LEG	20-9/16 x 16-1/8 x 5-11/16	For Models 302B-15.75, 303B-15.75, 321B	1	12
311-95	20-3/4 x 12-3/4 x 15	For Models 309B, 310B	1	15
311B/305B-95	20-3/4 x 12-3/4 x 15	Only for Model 305B-95	1	15



Ships UPS

* Minimum order quantity

COMPARTMENT BOXES FOR LARGE RACKS



**Model
102-95**



**Model
107-95**



**Model
109-95**



**Model
111-95**



**Model
119-95**



**Model
113-95**



**Model
115-95**



**Model
117-95**



**Model
125-95**



**Model
131-95**

Large Compartment Boxes

- Prime cold rolled steel outer shell
- Compartments have scooped bottoms to make part removal easy
- Full piano hinge on cover provides rigidity
- Handle allows for easy transport
- Positive pull-down catch keeps cover tightly closed to prevent part migration
- Racks, pouches and cover labels are available as accessories
- Durable gray powder coat finish

Model	Overall Dim: WxDxH (In.)	Compartments	Carton Pack	Ship Wt. (Lbs.)
102-95	18 x 12 x 3	24	4	32
107-95	18 x 12 x 3	32	4	32
109-95	18 x 12 x 3	21	4	32
111-95	18 x 12 x 3	20	4	32
113-95	18 x 12 x 3	16	4	32
115-95	18 x 12 x 3	12	4	32
117-95	18 x 12 x 3	6 vertical	4	32
125-95	18 x 12 x 3	6 horizontal	4	32
099-95	18 x 12 x 3	Variable/Adjustable	4	32
097-95	Dividers for 099-95 (straight)		Bag of 12	1
119-95	18 x 12 x 3	Variable/Adjustable	32	4
120-95	Scooped dividers for 119-95		1	Bag of 9
131-95	18 x 12 x 3	Adjustable	4	32
132-95-EXL-H/DV	Dividers for 131-95 (horizontal)		1	1
133-95-EXL-V/DV	Dividers for 131-95 (vertical)		1	1
123-95	18 x 12 x 3	Large Empty Metal Shell	4	32

FOB CT



Ships UPS

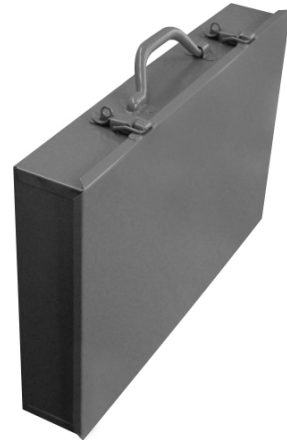
COMPARTMENT BOXES WITH HEAVY DUTY HANDLE



Model 102PC227-95



Model 119PC227-95



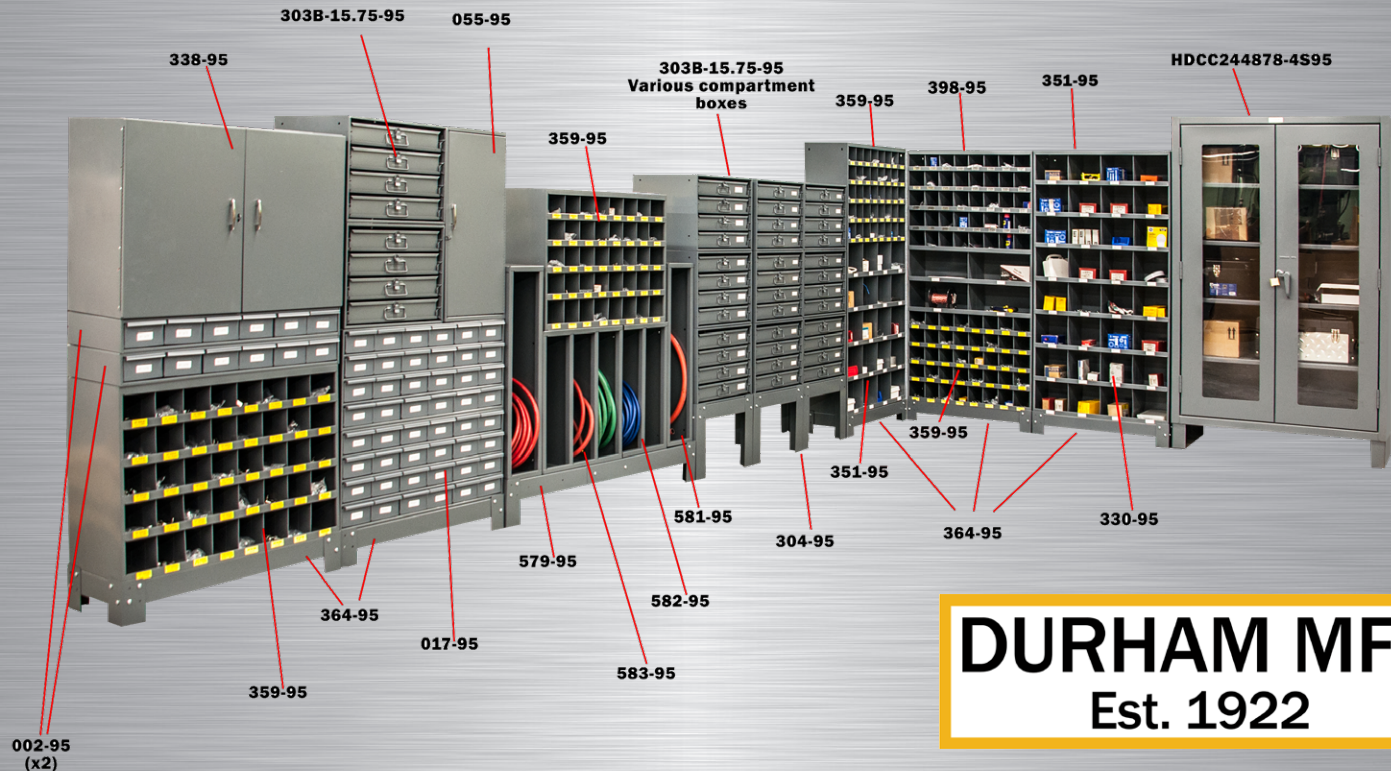
Scoop Box Style & Heavy Duty Handle

- Prime cold-rolled steel outer shell
- Compartments have scooped bottoms to make part removal easy
- Full piano hinge on cover provides rigidity
- Comfort Grip handle allows for easy transport
- Positive pull-down lock-able catches keeps cover tightly closed to prevent part migration
- Racks, pouches and cover labels are available as accessories
- Gray, gloss, powder coat finish

Model	Overall Dim: WxDxH (In.)	Compartments	Carton Pack	Ship Wt. (Lbs.)
102PC227-95	17-15/16 x 11-7/8 x 2-15/16	(20) 2-11/16 x 2-7/8 (4) 3-13/16 x 2-7/8	4	32
119PC227-95	17-15/16 x 11-7/8 x 2-15/16	Variable/Adjustable (4) 4-5/16 x 11-7/16	4	32



Ships UPS



DURHAM MFG®
Est. 1922

Compartment Boxes and Racks



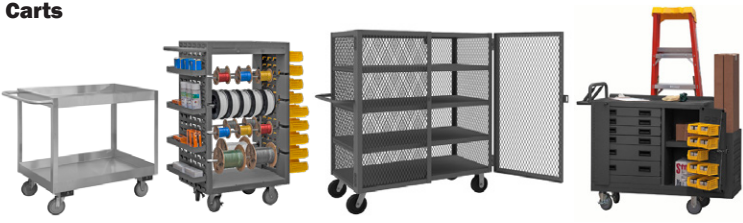
Safety Storage



Cabinets



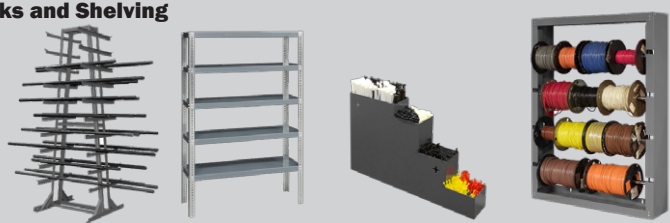
Carts



Small Parts Storage



Racks and Shelving



Workbenches and Workstations



Jobsite Storage



First Aid



Document Storage

