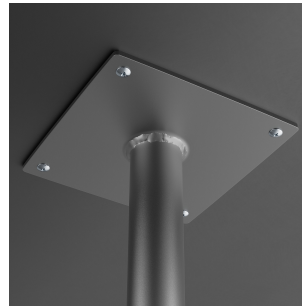


#427BARSSPIN

Approval: _____ Date: _____



- Made from durable powder-coated stamped steel
- Compatible with cantilever table bases (sold separately)
- Provides additional support for the base
- 40" bar height
- Includes an adjustable floor glide


 Fully Assembled

Height	40 Inches
Diameter	1 1/4 Inches
Height Style	Bar Height
Post Diameter	1 1/4 Inches
Assembly Options	Fully Assembled
Base Style	Pin Legs
Color	Black
Features	Corrosion-Resistant
Type	Legs

Technical Data	
Material	Stamped Steel Steel
Usage	Indoor

Notes & Details

Provide extra support to your cantilever base with this Lancaster Table & Seating pin leg. This leg is made from durable powder-coated stamped steel and is compatible with cantilever table bases (sold separately). It provides additional support for the cantilever base to ensure a strong, sturdy table. The 40" height makes it ideal for bar height booth seating. It comes standard with an adjustable glide to prevent scuffs and scratches on your floor.

 **WARNING:** This product can expose you to chemicals including lead, which are known to the State of California to cause cancer and birth defects or other reproductive harm. For more information, go to www.p65warnings.ca.gov.