



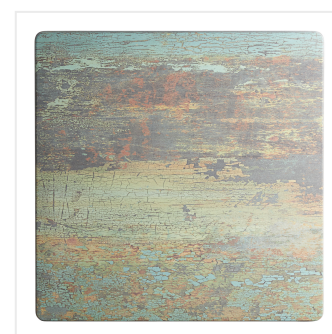
Lancaster Table & Seating Excalibur 23 5/8" x 23 5/8" Square Standard Height Table with Textured Canyon Painted Metal Finish and Cross Base Plate

#4272424CM22D

Item #: 4272424CM22D Qty: _____

Project: _____

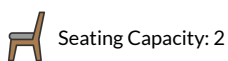
Approval: _____ Date: _____



Features

- Designed for use indoors and outdoors
- Durable laminate resists scratches, impacts, breaks, and burns
- Textured canyon painted metal finish offers the rustic look of distressed metal
- UV- and weather-resistant construction
- Includes standard dining height table base column with cross plate for enhanced stability

Certifications



Technical Data

Length	23 5/8 Inches
Width	23 5/8 Inches
Height	30 3/16 Inches
Base Length	22 Inches
Base Width	22 Inches
Height Style	Standard Height
Assembled	Assembly Required
Base Color	Black
Base Material	Steel
Finish	Metal

Technical Data

Color	Brown Green
Frame Material	Steel
Installation Type	Freestanding
Shape	Square
Table Seating Capacity	2 Chairs
Tabletop Material	Laminate Wood
Tabletop Thickness	1 3/16 Inches
Type	Tables
Usage	Indoor Outdoor

Notes & Details

Enhance the appeal of your dining area and provide your guests with a reliable surface to gather around with this Lancaster Table & Seating Excalibur table! This square table has a textured canyon painted metal finish that offers the rustic look of distressed metal with a subtle, intriguing texture. It boasts an eco-friendly, quality laminate construction fashioned from compression-molded wood to provide a dependable yet distinct aesthetic. Plus, the UV- and weather-resistant design is built to withstand the elements, making it the perfect indoor or outdoor option that your guests can rely on. To save you money on shipping costs, the table ships unassembled. All required assembly hardware is included so you can quickly set it up in its proper space and let your guests enjoy!

The included cross column table base elevates the table to standard dining height and ensures that the table stays steady and balanced while guests enjoy your signature drinks and dishes. Made of strong stamped steel with a sleek and resilient black e-coating, it's well equipped to weather the elements and resist corrosion. Blending into any environment to enhance your dining space, this table base and column are sure to provide reliable long-lasting use at both indoor and outdoor eateries. Plus, pre-drilled holes allow for the use of floor glides to protect your flooring from scuffs and scratches!

This impressive table has superior scratch, impact, break, and burn resistance for increased longevity. It requires minimum maintenance to boost the efficiency of your cleaning process and to encourage a quicker turnover rate. In addition to being stylish and durable, this light weight table is also easy to move and transport so you can quickly reconfigure your dining space and easily clean up at the end of the night. It can be used indoors during the off-season then transferred outdoors as the weather gets nicer! Whether you're looking to revamp your restaurant's front-of-house space or enhance the appearance of your cafe patio or deck, this table will spotlight the beauty of nature while focusing on an elegant dining experience in order to bring you the best of both worlds!

⚠ WARNING: This product can expose you to chemicals including lead, which are known to the State of California to cause cancer, birth defects, or other reproductive harm. For more information, go to www.p65warnings.ca.gov.