



STAINLESS STEEL
TABLE WITH SINK
 Conforms To NSF 61/9 Lead Free Requirements



Item #: _____ Qty #: _____
 Model #: _____
 Project #: _____

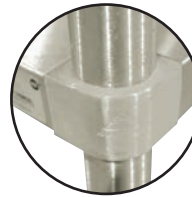


Rolled Rim Edge on
 Front & Square
 Edges on Side & Back



Bullet Feet

KMS-11B-305R Shown



Featuring as Standard:
"THE PROVEN"
 ORIGINAL ADVANCE TABCO
**Adjustable Undershelf
 with Die Cast Leg Clamp**

FEATURES:

Top is furnished with 1 5/8" sanitary rolled rim edge on front and square sides, and a 5" splash with a 1" return on the rear side.
 THREE hat channels stud welded to reinforce and maintain a level working surface.
 Pre-engineered welded angle adapters insure ease of future drawer installation.
 Aluminum die cast "leg-to-shelf" clamp secures shelf to leg eliminating unsightly nuts and bolts. Undershelf is adjustable.
 Stainless steel 16" x 20" x 12" sink bowl integrally welded to top.
 K-50 deck mounted lead free compliant faucet included.

CONSTRUCTION:

All TIG welded. Exposed weld areas polished to match adjacent surfaces.
 Entire top mechanically polished to a satin finish.
 Top is sound deadened.
 Roll formed embossed galvanized hat channels are secured to top by means of structural adhesive and weld studs.
 Gussets welded to support hat channels.

MATERIAL:

TOP is 16 gauge stainless steel type "304" series.
 SHELF is 18 gauge stainless steel type "430" series.
 LEGS are 1 5/8" diameter, tubular stainless steel with stainless steel gussets and 1" adjustable stainless steel bullet feet.

30" WIDE Model #	Length (L)	Sink Location	Approx. Weight	Approx. Cu. Ft.
KMS-11B-305L	60"	Left	150 lbs.	18
KMS-11B-305R	60"	Right	150 lbs.	18
KMS-11B-306L	72"	Left	180 lbs.	22
KMS-11B-306R	72"	Right	180 lbs.	22

Choose Left or Right Sink Position

WARNING: Equipment that include faucets on this page may contain a chemical known to the State of California to cause cancer, birth defects or other reproductive harm.



Customer Service Available To Assist You 1-800-645-3166 8:30 am - 8:00 pm E.S.T.

For Orders & Customer Service:

Email: customer@advancetabco.com or Fax: 631-242-6900

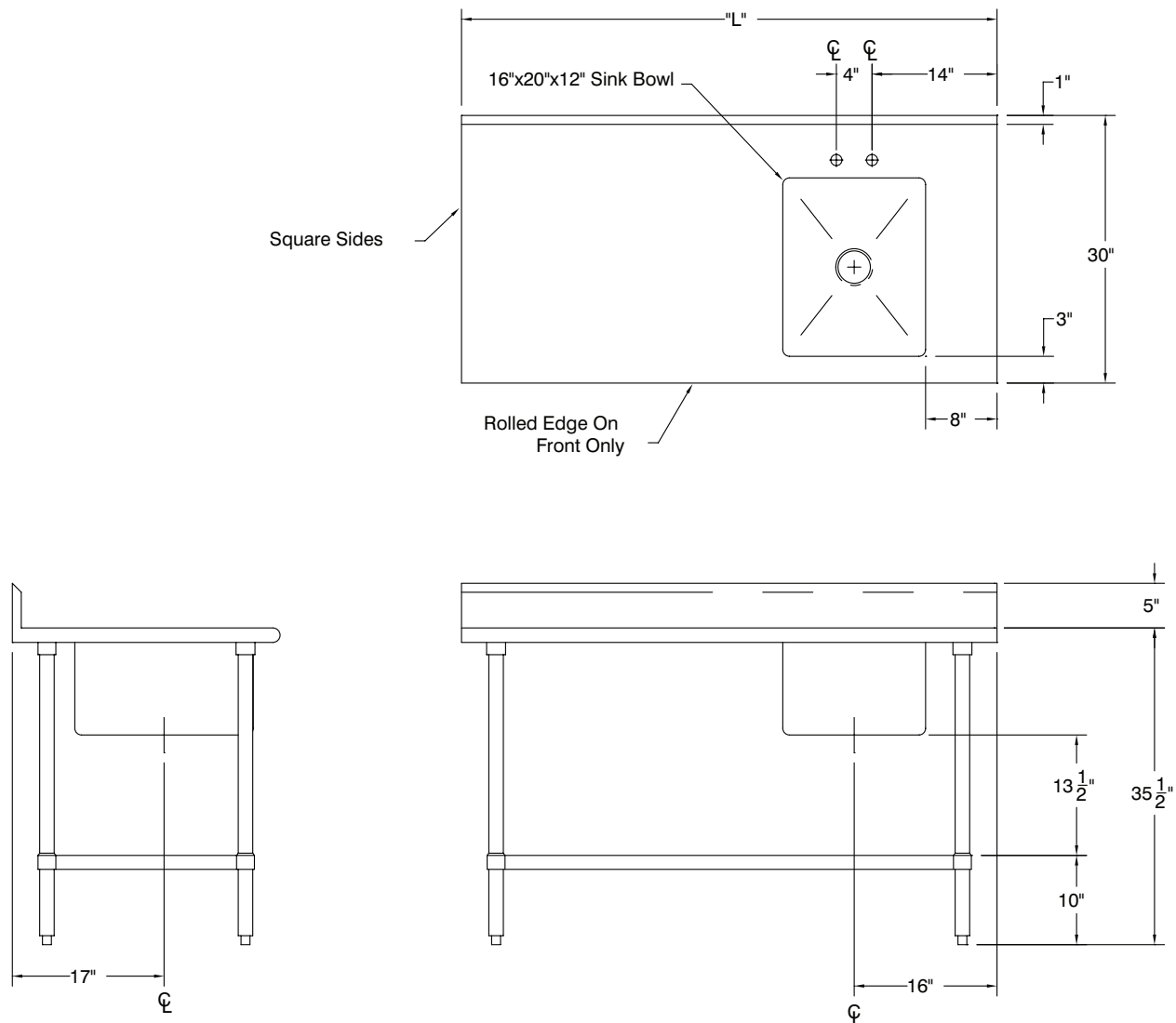
For Smart Fabrication™ Quotes:

Email: smartfab@advancetabco.com or Fax: 631-586-2933

DETAILS and SPECIFICATIONS

TOL $\pm .500"$

ALL DIMENSIONS ARE TYPICAL



REF-O

200 Heartland Boulevard, Edgewood, NY 11717-8380

ADVANCE TABCO is constantly engaged in a program of improving our products. Therefore, we reserve the right to change specifications without prior notice.

© ADVANCE TABCO, AUGUST 2018