



KM-2600S_J3

3 PHASE STACKABLE ICE CUBER



KM-2600S_J3
05/10/17
Item # 13418

W x D x H
48" x 27^{3/8}" x 36^{7/16}"

KM Edge SERIES


KM-2600SWJ3
Water-Cooled 3 Phase
Shown on optional bin: B-900



KM-2600SRJ3 ★
Remote Air-Cooled 3 Phase



Item #: _____
Project: _____
Qty: _____
AIA#: _____

Features

- ▶ Individual crescent cube
- ▶ Stainless steel evaporator
- ▶ CycleSaver™ design 

- Up to 2617 lbs. of ice production per 24 hours
- Stackable for 5234 lbs. per 24 hours ice production in the same floor space
- Durable stainless steel exterior
- Protected by H-GUARD Plus® Antimicrobial Agent 
- EverCheck™ alert system 
- R-404A Refrigerant

Available on Bins:

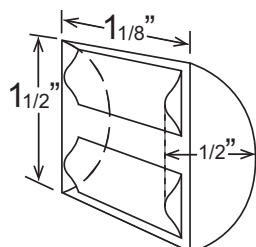
B-800 **B-1150SS** **B-1500SS** *Top kit may be required.*
B-900 **B-1300SS** **B-1650SS** *See Bin Spec Sheets.*

Warranty:

Valid in United States, Canada, Puerto Rico and U.S. Territories.
Contact factory for warranty in other countries.

| | | ICE PRODUCTION | | | | WATER USAGE | | ELECTRICAL | | | | | | |
|-------------------|-------------|--|------|-------------------------|------|--|--|--------------------------------------|--|----------|---------------|------------------------------|--------------------|-----------------|
| Condenser | Model | Air / Water Temp Lbs. per 24 hours 70°/50°F 90°/70°F | | Per Cycle Lbs. Cubes | | Potable Gal. per 100 lbs. 90°/70°F | Condenser Gal. per 100 lbs. 90°/70°F | kWh Used per 100 lbs. 90°/70°F | Max. Fuse Size or HACR Circuit Breaker | Amperage | Voltage | Heat Rejection BTU/hr. | Shipping Weight | ENERGY STAR® |
| Water-Cooled | KM-2600SWJ3 | 2482 | 2480 | 43.9 | 2160 | 16.0 | 87 | 3.60 | 30A | 12.8A | 208-230V/60/3 | 31,600 | 415 lbs. | |
| Remote Air-Cooled | KM-2600SRJ3 | 2617 | 2580 | 42.6 | 2160 | 16.0 | N/A | 3.61 | 30A | 20.6A | 208-230V/60/3 | 36,000 | 440 lbs. | ★ |

KM Edge Cube Dimensions*



* approximate size in inches, image not to scale

Operating Limits

- Ambient Temp Range 45 - 100°F
- Water Temp Range 45 - 90°F
- Water Pressure 10 - 113 PSIG
- Voltage Range 187 - 253V

Service

- Panels easily removed and all components accessible for service.
- Allow 6" (15 cm) clearance at rear, sides, and top for proper air circulation and ease of maintenance/service.

Plumbing

- Icemaker Water Supply Line: Minimum 3/8" Nominal ID Copper Water Tubing or Equivalent
- Icemaker Drain Line: Minimum 3/4" Nominal ID Hard Pipe or Equivalent
- Water-Cooled Model (Lines Must Be Independent of Icemaker)
- Condenser Water Supply Line: Minimum 3/8" Nominal ID Copper Water Tubing or Equivalent
- Condenser Drain/Return Line: Minimum 3/8" Nominal ID Hard Pipe (open drain system) or Copper Water Tubing (closed loop system) or Equivalent



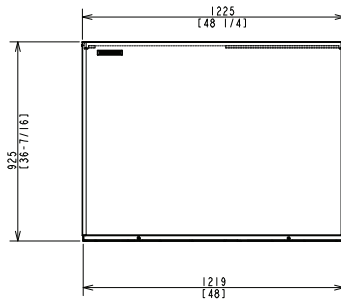
KM-2600S_J3

3 PHASE STACKABLE ICE CUBER

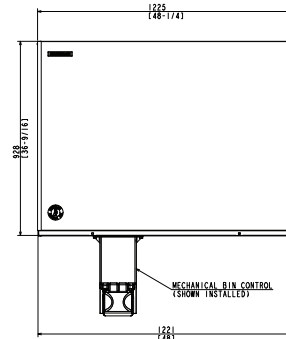


KM-2600S_J3
05/10/17
Item # 13418

FRONT VIEW

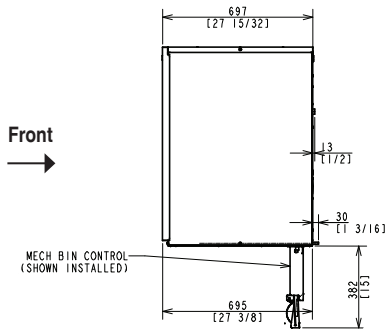


WATER-COOLED

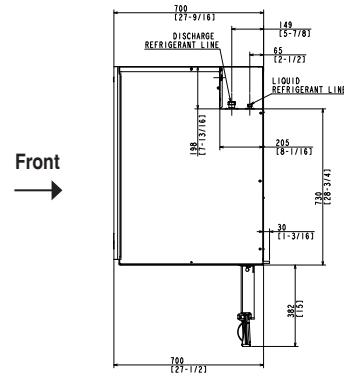


REMOTE AIR-COOLED

SIDE VIEW

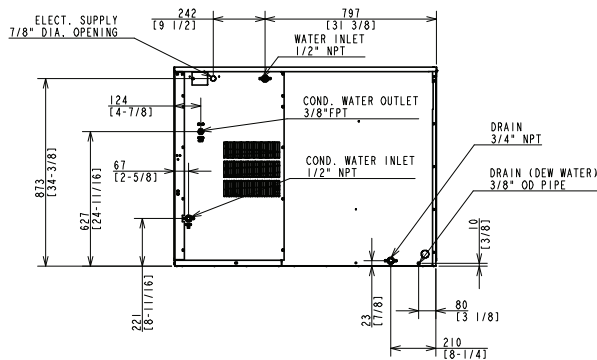


WATER-COOLED

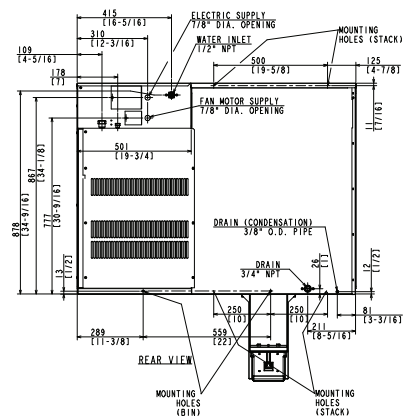


REMOTE AIR-COOLED

REAR VIEW

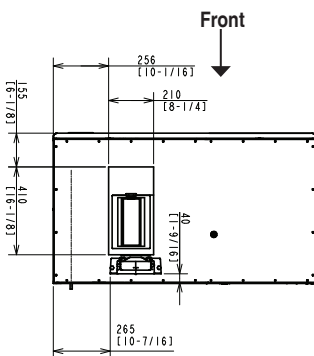


WATER-COOLED

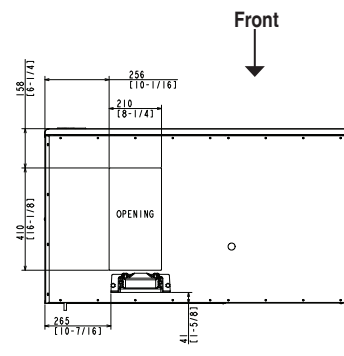


REMOTE AIR-COOLED

BOTTOM VIEW



WATER-COOLED



REMOTE AIR-COOLED

URC-26J Remote Condenser (Sold Separately)
(W x D x H) 46 3/8 X 15 11/16 X 40 1/2
For Use with KM-2600SRJ3

Pre-Charged Tubing Kits
(Sold Separately)
20' R404-20610
35' R404-35610
55' R404-55610



Voltage supply for the URC Remote Condenser is supplied from the Ice Maker. No additional circuit is required.

