



003	004	005
Blue	Purple	Teal
007	008	112
Yellow	Red	Navy
114	119	180
Orange	Green	Black

48.5" W x 23.5" D x 38.5" H

Ship Weight: 242 lbs

Warranty: Lifetime

Fully Assembled

Made in United States

KYDZ Safe.

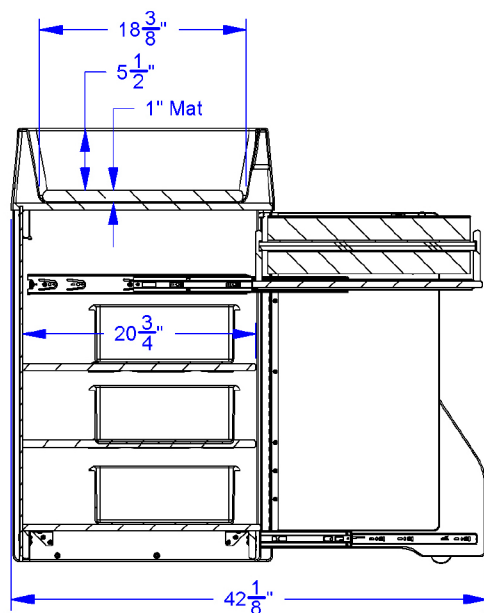
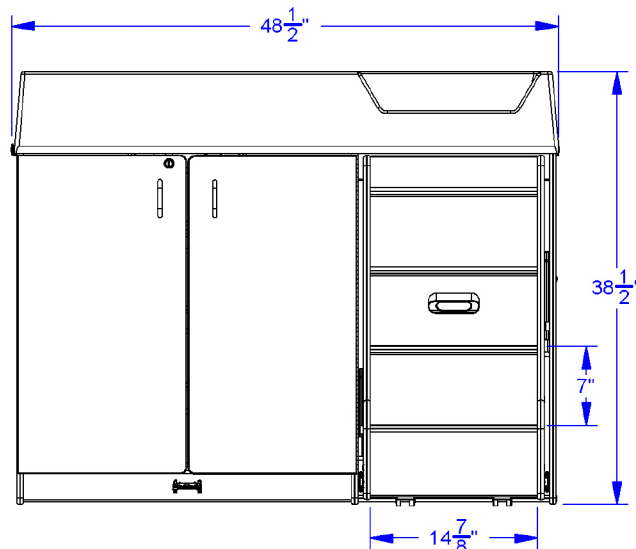
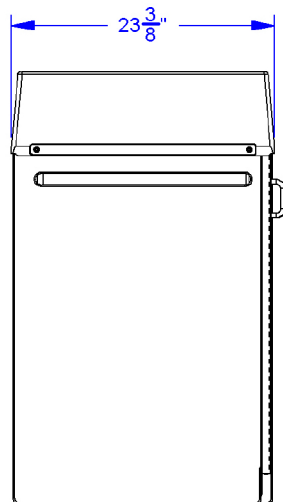
KYDZ Strong.

KYDZ Hinges.

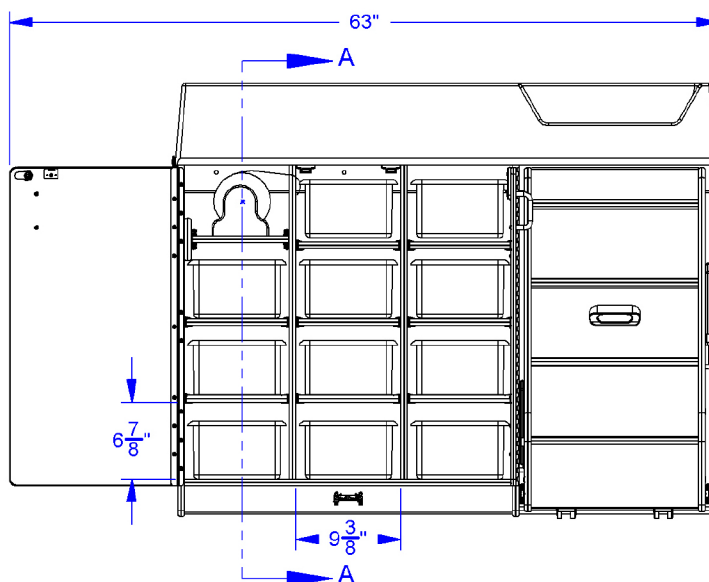
TRU Edge.

The 6.5" deep plastic top and laminate surfaces on this changing table keep little ones secure and stands up to rigorous cleaning. The lockable pull-out stairs located on the right side of the unit contain anti-slip treads for safety. Included changing pad keeps kids comfortable while changing. The included, 11 colored Cubbie-Trays make it easy to keep supplies organized and are located behind secured doors for safety. Glide-out paper dispenser (paper not included) keeps paper handy and easily accessible. Features speckled-gray laminate surface with black TRUEdge®. KYDZSafe® edges. KYDZStrong® construction. KYDZHinges®. TRUEdge®. Stationary. Constructed of 5/8" thick freckled-gray Thermally Fused Laminate (TFL). Cushions comply with Cal. TB 117-2013. Compliant with ASTM F2388-18.





SECTION A-A



Jonti-Craft Flagship Features Include:

KYDZSafe corners & edges are rounded to minimum of 1/2" radius. KYDZSafe kickplates prevent pinching & lost objects. KYDZSafe 15" depth adds increased stability & 25% more storage than competitor's 12" depth. KYDZStrong materials are guaranteed to last. KYDZStrong dowel-pin construction adds stability & strength. KYDZStrong Recessed backs give stability & structural integrity. KYDZHinges piano hinges prevent pinching. KYDZHinges are attached with no less than nine screws and allow doors to open to 270 degrees. TRUEdge is permanently thermo-fused to furniture, is moisture-resistant, and prevents germs from getting into the board. TRUEdge also comes in multiple colors.