



# Jonti-Craft® Enterprise Single Computer Desk - 3487JC

Item: 3487JC



29.5" W x 25.5" D x 24" H

Ship Weight: 43 lbs

Warranty: Lifetime

Ready-to-Assemble

Made in United States



Great for single student use. Keyboard shelf adjusts from 15.5" to 21.5" high. Side grommets and fully enclosed back manage and protect cords. Desktop is 22" high. Compatible with Jonti-Craft® Discovery CPU Booth. KYDZSafe® edges. KYDZStrong® construction. KYDZTuff® finish. TRUEdge®. Heavy-duty, locking casters for mobility. Grommet for cords. GREENGUARD Gold certified. CARB II & CPSIA compliant.

**KYDZ** Safe.

**KYDZ** Strong.

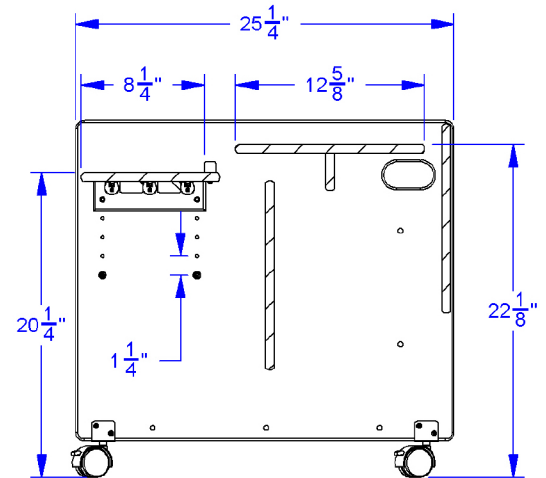
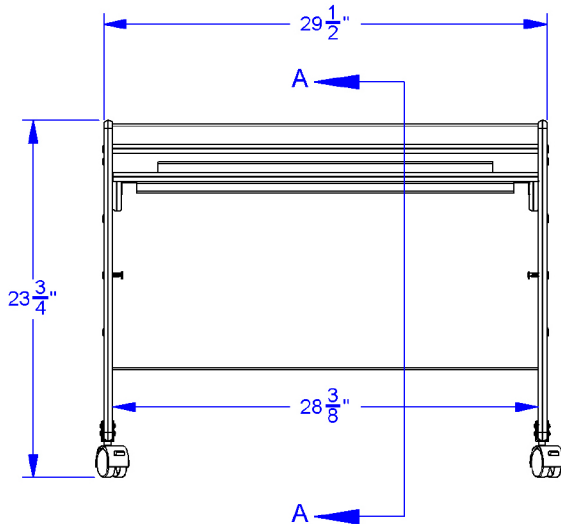
**KYDZ** Tuff.

**TRU** Edge.

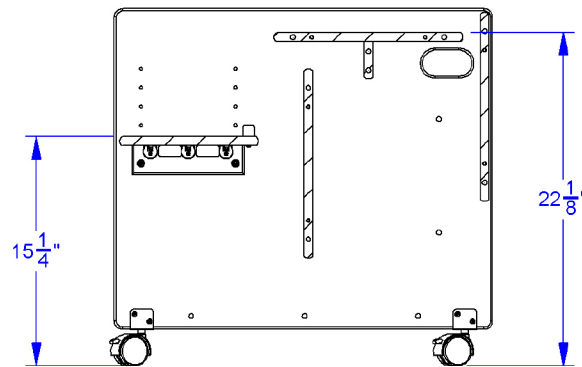




# JonTi-Craft® Enterprise Single Computer Desk - 3487JC



SECTION A-A  
HIGHEST HEIGHT



LOWEST HEIGHT

## JonTi-Craft Flagship Features Include:

KYDZSafe corners & edges are rounded to minimum of 1/2" radius. KYDZSafe kickplates prevent pinching & lost objects. KYDZSafe 15" depth adds increased stability & 25% more storage than competitor's 12" depth. KYDZStrong materials are guaranteed to last. KYDZStrong dowel-pin construction adds stability & strength. KYDZStrong Recessed backs give stability & structural integrity. KYDZTuff acrylic finish is ultra-long lasting and resists yellowing. The UV coating is environmentally friendly and easy to clean with an extra-strong resistance to daily wear and common cleaning products, like bleach and nail polish remover. TRUEdge is permanently thermo-fused to furniture, is moisture-resistant, and prevents germs from getting into the board. TRUEdge also comes in multiple colors.