



Jonti-Craft® Apollo Double Computer Desk - White Top - 3357JC

Item: 3357JC



Adjustable desk height to accommodate pre-school students through adults. Grommet and fully enclosed back help hide unsightly cords and wires. Storage shelf under E-Z to clean laminate top provides space for computer accessories. Compatible with Endeavour CPU Booths. KYDZSafe® edges. KYDZStrong® construction. KYDZTuff® finish. TRUEdge®. GREENGUARD Gold certified. CARB II & CPSIA compliant. Grommet for cords. Triangular gussets for added strength. Maple legs. Heavy-duty, locking casters for mobility.

60" W x 24" D x 18-30" H

Ship Weight: 103 lbs

Warranty: Lifetime

Minimal Assembly

Made in United States

KYDZ Safe.

KYDZ Strong.

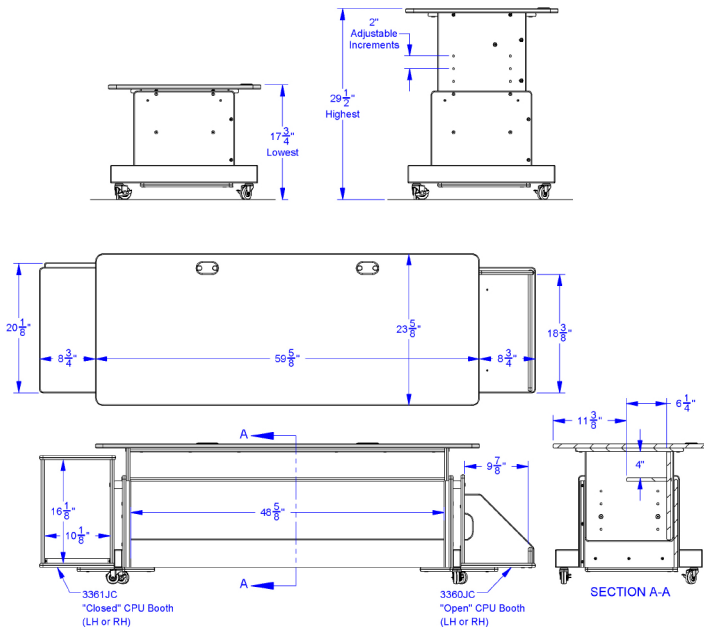
KYDZ Tuff.

TRU Edge.





Jonti-Craft® Apollo Double Computer Desk - White Top - 3357JC



Jonti-Craft Flagship Features Include:

KYDZSafe corners & edges are rounded to minimum of $\frac{1}{2}"$ radius. KYDZSafe kickplates prevent pinching & lost objects. KYDZSafe 15" depth adds increased stability & 25% more storage than competitor's 12" depth. KYDZStrong materials are guaranteed to last. KYDZStrong dowel-pin construction adds stability & strength. KYDZStrong Recessed backs give stability & structural integrity. KYDZTuff acrylic finish is ultra-long lasting and resists yellowing. The UV coating is environmentally friendly and easy to clean with an extra-strong resistance to daily wear and common cleaning products, like bleach and nail polish remover. TRUEdge is permanently thermo-fused to furniture, is moisture-resistant, and prevents germs from getting into the board. TRUEdge also comes in multiple colors.