



003	004	005
Blue	Purple	Teal
007	008	112
Yellow	Red	Navy
114	119	180
Orange	Green	Black

Inspire budding chefs with this kitchen refrigerator. Multiple interior shelves provide plenty of storage for food and dishes. Printed water and icemaker make for realistic play. Magnetic catches help keep doors closed while chrome-looking handles provide a high-end aesthetic. Features freckled-gray laminate and black TRUEdge®. KYDZSafe® edges. KYDZStrong® construction. KYDZHinges®. TRUEdge®. Stationary.

20" W x 15" D x 35" H

Ship Weight: 60 lbs

Warranty: Lifetime

Fully Assembled

Made in United States

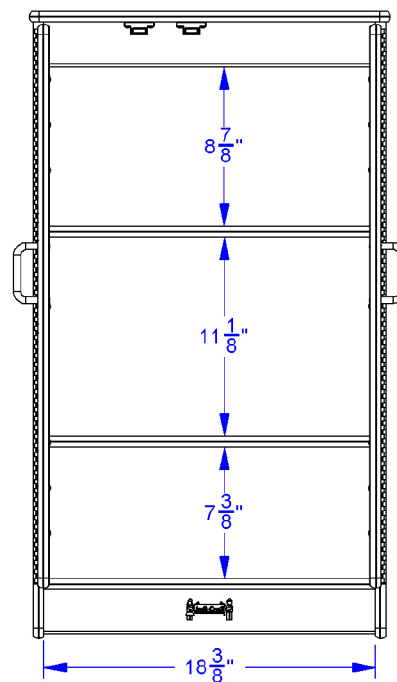
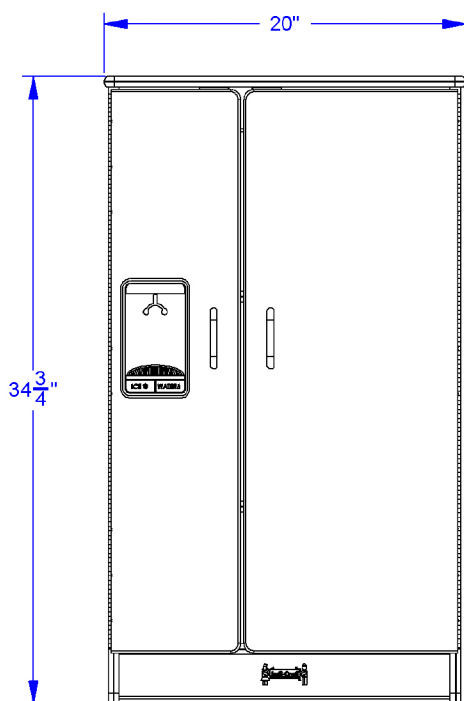
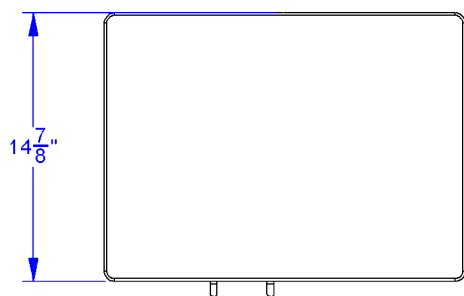
 KYDZ Safe.

 KYDZ Strong.

 KYDZ Hinges.

 TRU Edge.





Doors Open

## Jonti-Craft Flagship Features Include:

KYDZSafe corners & edges are rounded to minimum of 1/2" radius. KYDZSafe kickplates prevent pinching & lost objects. KYDZSafe 15" depth adds increased stability & 25% more storage than competitor's 12" depth. KYDZStrong materials are guaranteed to last. KYDZStrong dowel-pin construction adds stability & strength. KYDZStrong Recessed backs give stability & structural integrity. KYDZHinges piano hinges prevent pinching. KYDZHinges are attached with no less than nine screws and allow doors to open to 270 degrees. TRUEdge is permanently thermo-fused to furniture, is moisture-resistant, and prevents germs from getting into the board. TRUEdge also comes in multiple colors.