



KYDZ Suite® Panel - T-height - 48" Wide - Magnetic Write-n-Wipe - 1514JCTMG

Item: 1514JCTMG



48" W x 1" D x 24.5" H

Ship Weight: 20 lbs

Warranty: Lifetime

Fully Assembled

Made in United States



KYDZ Safe.

KYDZ Strong.

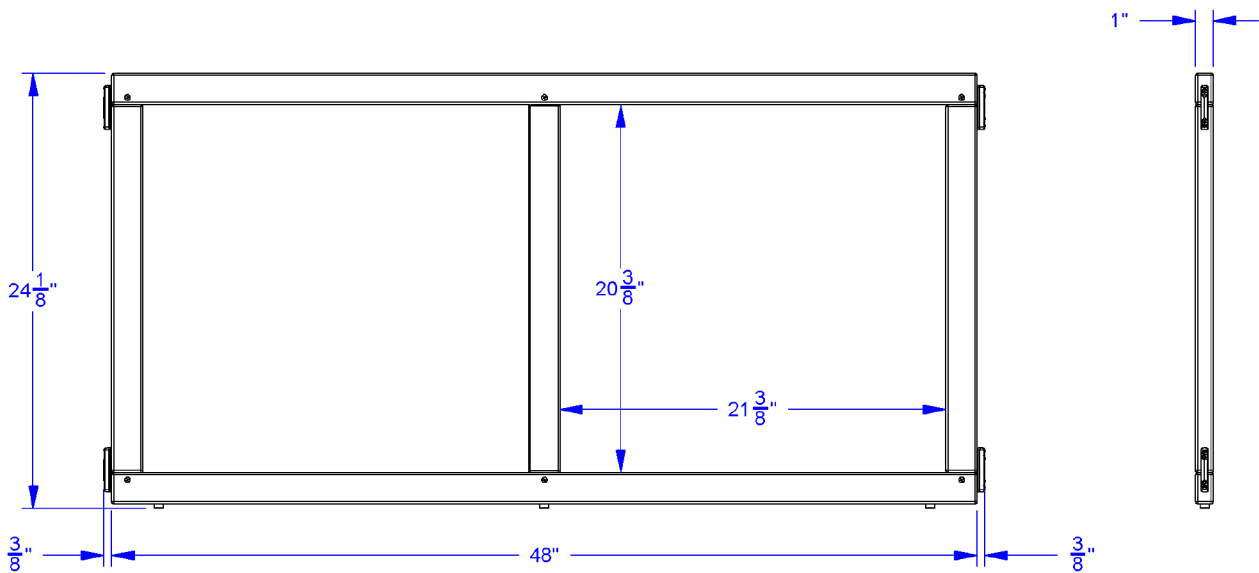
KYDZ Tuff.

KYDZ Suite® Panels help create or define a space for your unique needs. Magnetic Write-n-Wipe panel will convert any unit into a language enrichment center. Magnetic surface provides tactile learning while Write-n-Wipe surface helps improve fine motor skills. One-side Magnetic Write-n-Wipe, other side finished hardboard. Connect to T-Height Hubs (24.5" high). KYDZSafe® edges. KYDZStrong® construction. KYDZTuff® finish. Constructed with Hard Maple, 50% stronger than soft Maple. Connects to other KYDZ Suite® and Jonti-Craft® products.





KYDZ Suite® Panel - T-height - 48" Wide - Magnetic Write-n-Wipe - 1514JCTMG



Jonti-Craft Flagship Features Include:

KYDZSafe corners & edges are rounded to minimum of 1/2" radius. KYDZSafe kickplates prevent pinching & lost objects. KYDZSafe 15" depth adds increased stability & 25% more storage than competitor's 12" depth. KYDZStrong materials are guaranteed to last. KYDZStrong dowel-pin construction adds stability & strength. KYDZStrong Recessed backs give stability & structural integrity. KYDZTuff acrylic finish is ultra-long lasting and resists yellowing. The UV coating is environmentally friendly and easy to clean with an extra-strong resistance to daily wear and common cleaning products, like bleach and nail polish remover.