



## Jonti-Craft® Media Tower - 0539JC



Two sides to display and two sides for storage in one unit. The eight display shelves are fixed, while six of the book shelves are adjustable. Displays are approximately 2.5" deep. Shelves are 18¼" wide x 11" deep. KYDZSafe® edges. KYDZStrong® construction. KYDZTuff® finish. Caster mounted for mobility.

Item: 0539JC

24" W x 27" D x 46.5" H

Ship Weight: 112 lbs

Warranty: Lifetime

Fully Assembled

Made in United States

 KYDZ Safe.

 KYDZ Strong.

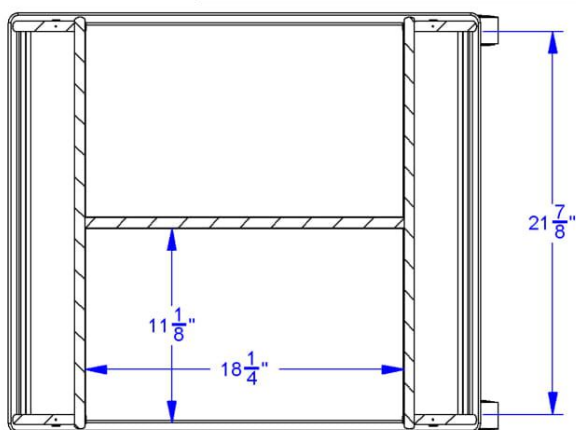
 KYDZ Tuff.



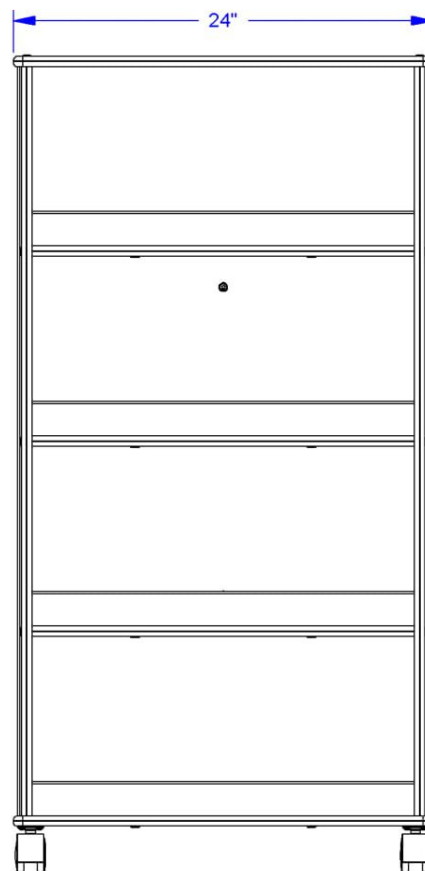
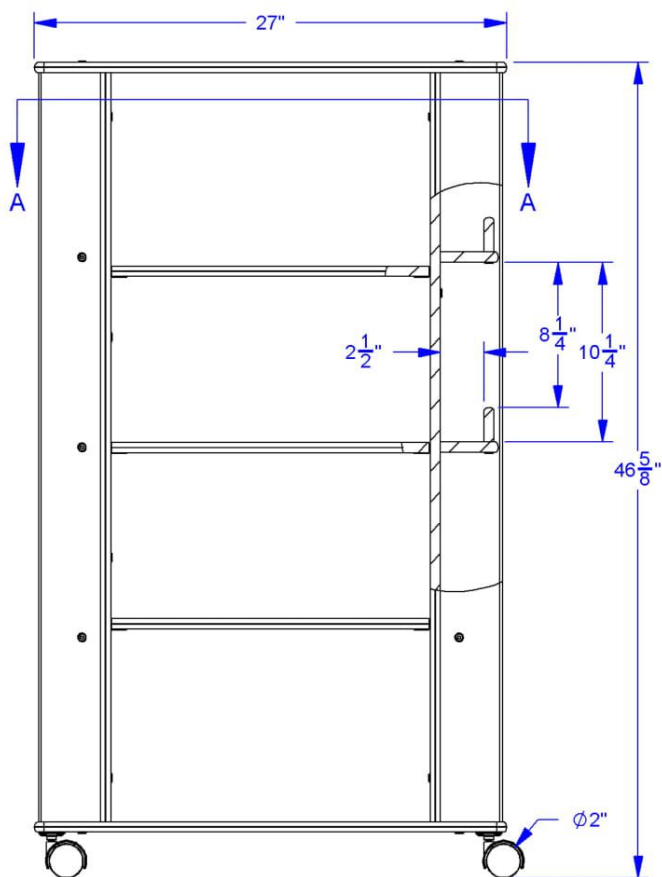




## JonTi-Craft® Media Tower - 0539JC



SECTION A-A



### JonTi-Craft Flagship Features Include:

KYDZSafe corners & edges are rounded to minimum of 1/2" radius. KYDZSafe kickplates prevent pinching & lost objects. KYDZSafe 15" depth adds increased stability & 25% more storage than competitor's 12" depth. KYDZStrong materials are guaranteed to last. KYDZStrong dowel-pin construction adds stability & strength. KYDZStrong Recessed backs give stability & structural integrity. KYDZTuff acrylic finish is ultra-long lasting and resists yellowing. The UV coating is environmentally friendly and easy to clean with an extra-strong resistance to daily wear and common cleaning products, like bleach and nail polish remover.