



## Jonti-Craft® Mobile Block Shelf - 0358JC

Item: 0358JC



24" W x 15" D x 35.5" H

Ship Weight: 60 lbs

Warranty: Lifetime

Fully Assembled

Made in United States



Organize your unit blocks easily with this storage unit designed just for that! Divide blocks according to size and shape. Accommodates a 220 piece set. KYDZSafe® edges. KYDZStrong® construction. KYDZTuff® finish. MAXBracket®. Back options available.

**KYDZ Safe.**

**KYDZ Strong.**

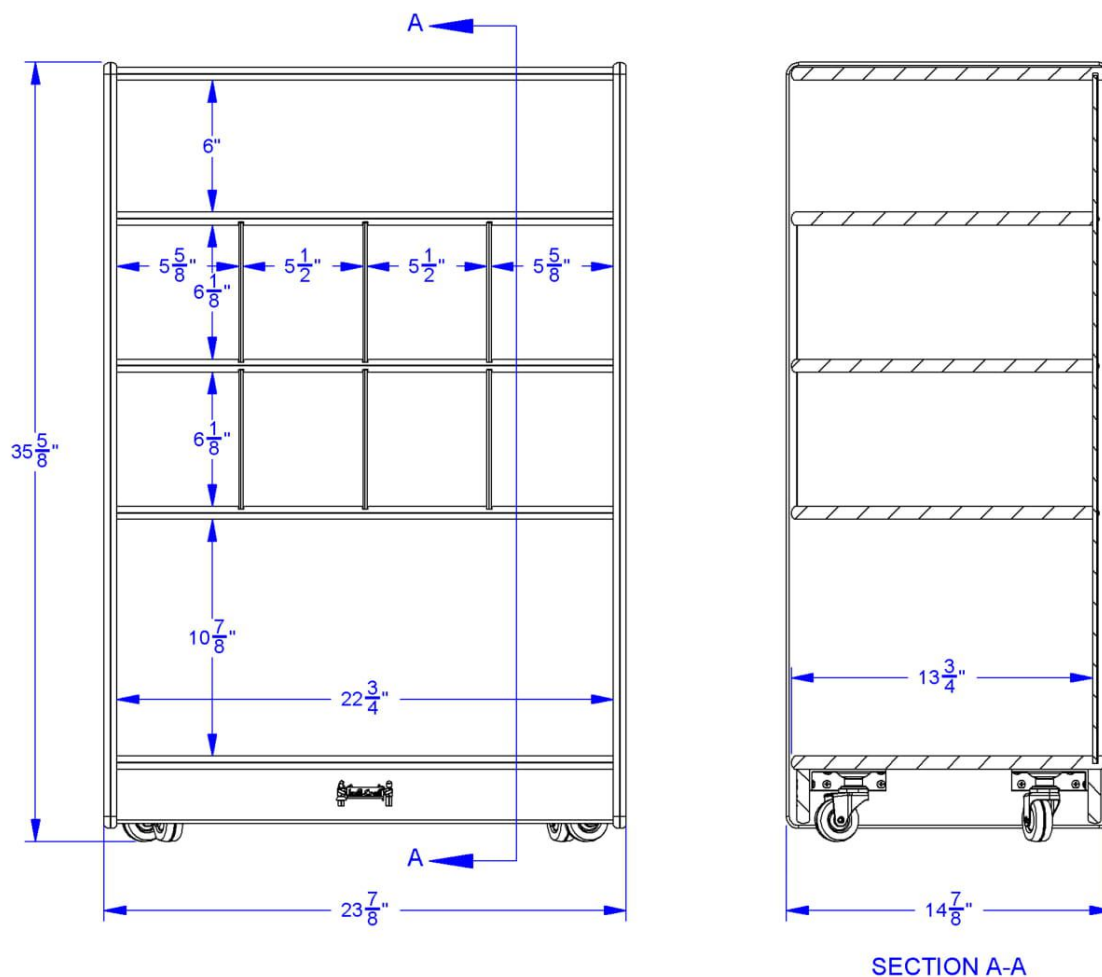
**KYDZ Tuff.**

**MAX Bracket.**





# JonTi-Craft® Mobile Block Shelf - 0358JC



## JonTi-Craft Flagship Features Include:

KYDZSafe corners & edges are rounded to minimum of 1/2" radius. KYDZSafe kickplates prevent pinching & lost objects. KYDZSafe 15" depth adds increased stability & 25% more storage than competitor's 12" depth. KYDZStrong materials are guaranteed to last. KYDZStrong dowel-pin construction adds stability & strength. KYDZStrong Recessed backs give stability & structural integrity. KYDZTuff acrylic finish is ultra-long lasting and resists yellowing. The UV coating is environmentally friendly and easy to clean with an extra-strong resistance to daily wear and common cleaning products, like bleach and nail polish remover. MAXBrackets are heavy-duty casters that make it easy to support and move furniture. Wheels are made of hard, non-marking rubber and a three-point-connection bracket adds triangular strength.