

General Information

Project Name: _____

Consultant: _____

Item #: _____

Model #: _____

Quantity: _____



Model SMTT
Shown w/ Optional
Accessory Holder



Specifications

SMTT Model Mixer Table with Tool Tree is constructed of 14GA Type 304 stainless steel with heavy duty 16GA tubular support legs with 5" diameter casters (two with brakes).

Optional angle slides are welded to the uprights in pairs. Alternatively, undershelf can be substituted. See options and price page.

Tool tree is integral 1 $\frac{5}{8}$ " in diameter with welded $\frac{3}{8}$ " Prongs. Tool tree height is 56".

Sound deadening is standard on all Model #SMTT units.

Product Guide

IMC Mixer/Equipment Stands are specially designed to provide sanitary carefree use - to permit quick, efficient and thorough cleaning.

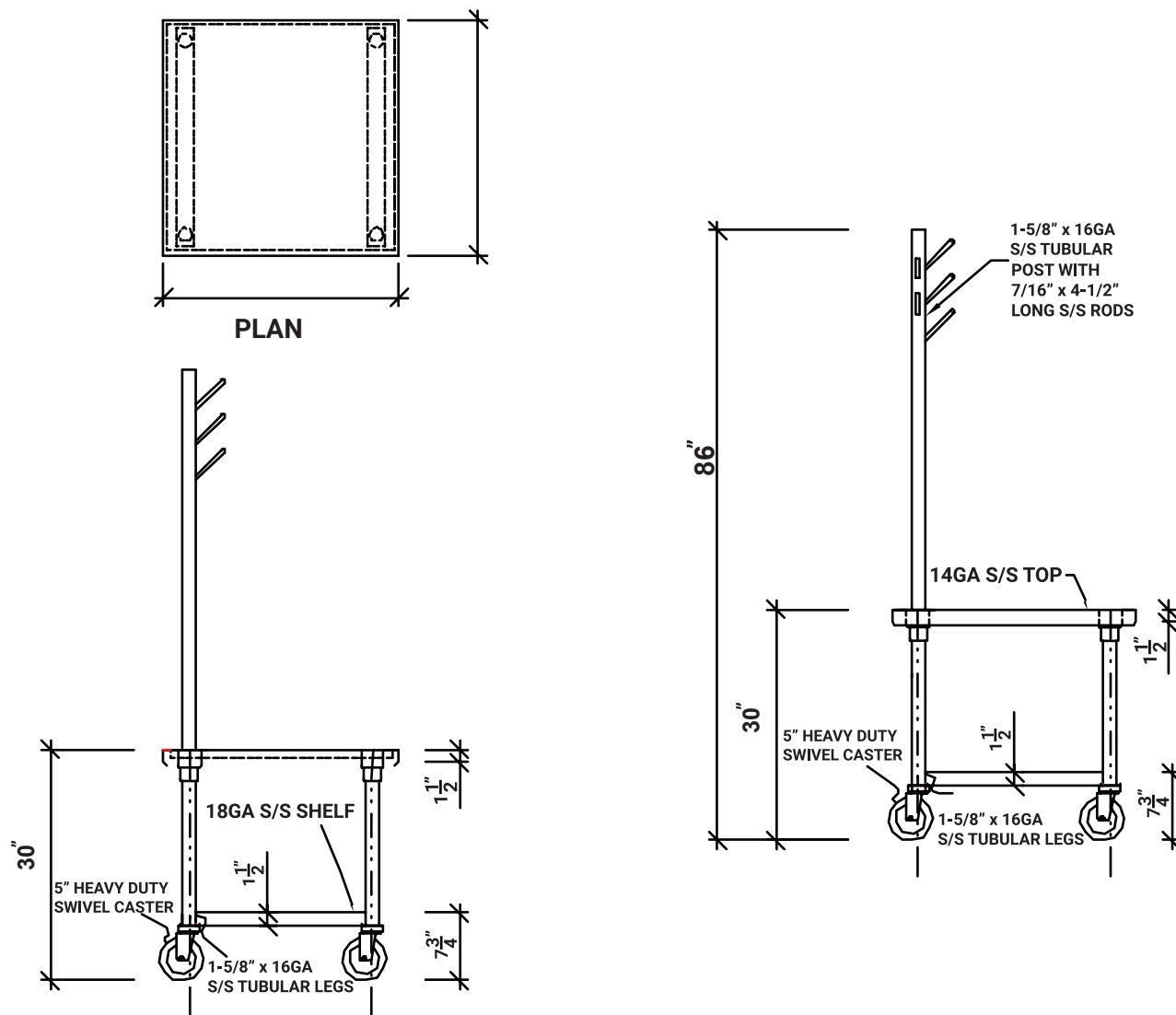
These units are compact design and utilized throughout the facility to store and transport equipment. Tray slides and drawers are used to transport and store hand appliances and other accessories.

Options

- ☐ **DS** - Drop Shelf
- ☐ **PL** - Posi-Lock
- ☐ **BAC** - Brakes on All Casters
- ☐ **AH** - Accessory Holder
- ☐ **UMD** - Undermount Drawer
- ☐ **AUS** - Additional Undershelf
- ☐ **PSLD** - Pan Slides (Per Set)
- ☐ **RVB** - Revolving Bumpers

*See Price List for more options

DRAWINGS



MIXER TABLE WITH TOOL TREE

Model	Size (W x L x H)
□ SMTT-2424	24" x 24" x 30"
□ SMTT-2430	24" x 30" x 30"
□ SMTT-3030	30" x 30" x 30"
□ SMTT-3036	30" x 36" x 30"
□ SMTT-3636	36" x 36" x 30"

Specifications subject to change without notice.

SMTT-020 0524