

# MANUAL GREASE TRAPS

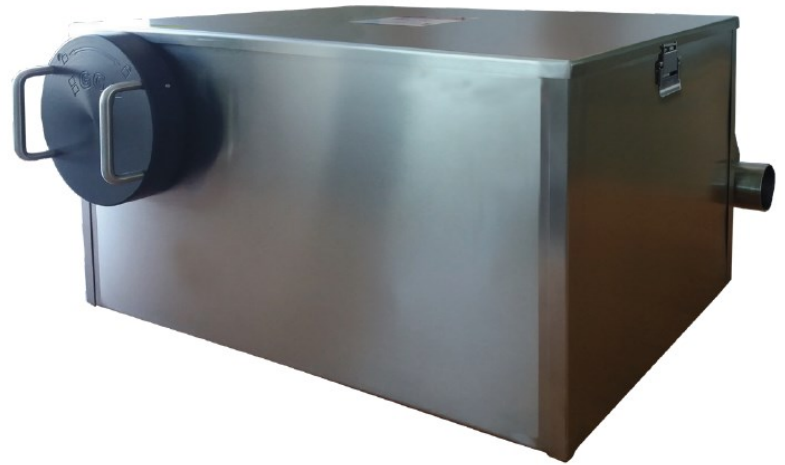


**15 GPM - 30+  
Pounds Grease  
Capacity**

## GGXM-15

### MANUAL GREASE TRAP WITH SOLIDS FILTER

- 304 Stainless Steel for superior hygiene and quality
- ASME 112.14.3 Approved
- Integral Flow Control
- Unique Dry Strainer design with front access
- Fully sealed lid with quick access release clips
- "Plumb Tidy" pipes fitted at back of unit
- Uni-directional flow
- De-sludge Valve



ASME  
A112.14.2

## STAINLESS STEEL CONSTRUCTION

Grease and Solids Separation for Pot Sinks, Pre-Rinse  
and Multi Compartment Sinks



**New Strainer Basket Design.**  
The basket is positioned above water level, allowing trapped solid to drip. It is lightweight making it easier to use.



**New basket front position**  
facilitates installations in confined spaces thus allowing the use of bigger models when needed.



**New lid closure gasket,**  
secures a better seal.

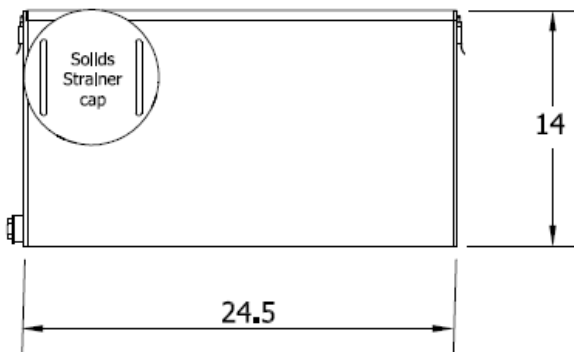


**Multiple inlet outlet connection,** positioned at the back facilitates the installation process.

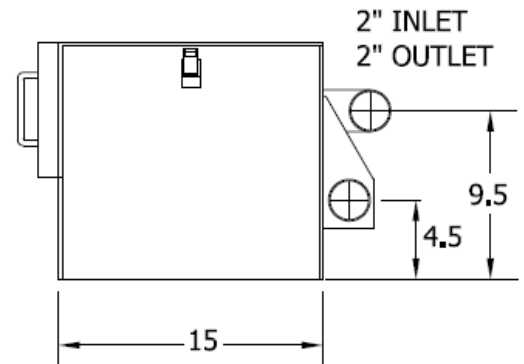
[info@greaseguardian.com](mailto:info@greaseguardian.com)  
[www.greaseguardianusa.com](http://www.greaseguardianusa.com)

**Call Free  
800-677-7861**

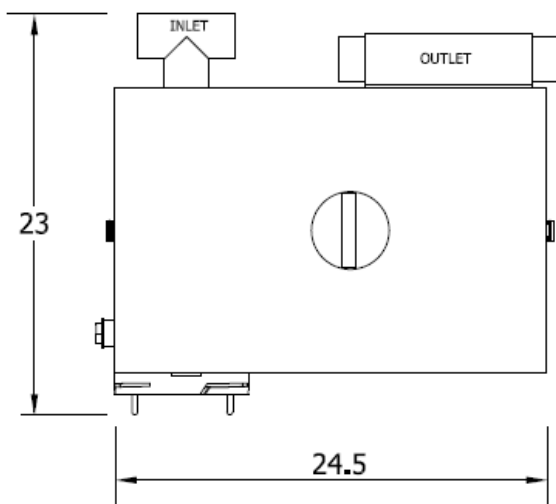
## TECHNICAL DETAILS



FRONT VIEW



END VIEW



TOP VIEW

### GGXM STANDARD FEATURES

- ☐ 10 Year Warranty
- ☐ 16 Gauge stainless steel welded tank
- ☐ Fully sealed air tight system
- ☐ Universal flow direction
- ☐ Dry solids strainer
- ☐ Integral flow control
- ☐ Integral gas trap



### TECHNICAL DATA

WEIGHT	50 pounds
MATERIAL	304 Stainless steel
INTERIOR	304 Stainless steel
FLOWRATE	15 gallons per minute
GREASE RETENTION	30+ pounds
SOLIDS STRAINER CAPACITY	6.6 pounds
TANK CAPACITY	10 gallons



[info@greaseguardian.com](mailto:info@greaseguardian.com)  
[www.greaseguardianusa.com](http://www.greaseguardianusa.com)  
 800-677-7861