

# Fusion

GHS 56"H Refrigerated Service Case w/ Flat Glass

Structural Concepts®  
DELIVERING FRESH. ALWAYS.™

• **GHS556R** 60-5/8"L x 42-3/4"D x 55-3/8"H



**Included**

- Flat angled lift-up front glass
- Integrated average product temperature of 40°F or less
- LED top & shelf lights
- One year parts & labor warranty
- Self-contained refrigeration
- Stainless steel rear exterior

Specify	Standard Features	Additional Options
EXTERIOR COLOR	• Stainless steel	
INTERIOR COLOR	• Black powder coated	
LOWER FRONT PANEL COLOR	• Stainless steel	
TRIM COLOR	• Silver	
BASE	• Casters with levelers	
BUMPER FRONT	• 1" Stainless steel plate rail bumper	
END PANELS	• Full w/stainless steel interior	
SCALE STAND	• None	
UPPER REAR	• Clear glass rear sliding doors	
PRICE TAG MOLDING	• None	
SHELVING	• 12" & 16" & 16" Glass shelving	
LIGHTS	• LED 3500K w/ frosted lens	
ELECTRICAL CONNECTION	• 6 ft straight blade power cord	
REFRIGERATION	• Self-contained refrigeration	
SENSOR	• None	

# Fusion

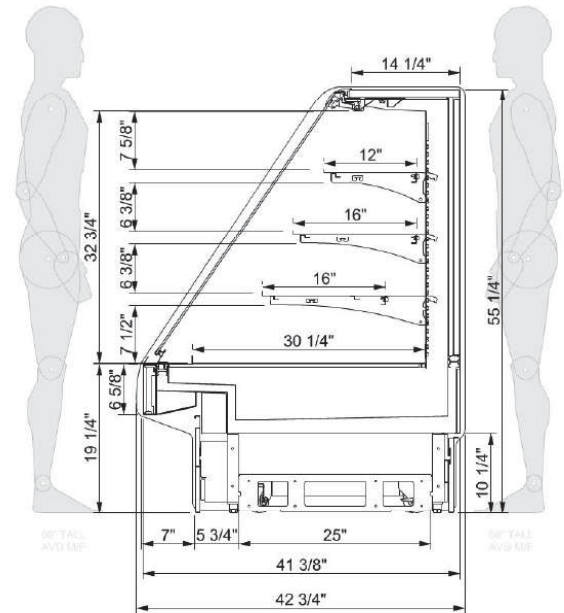
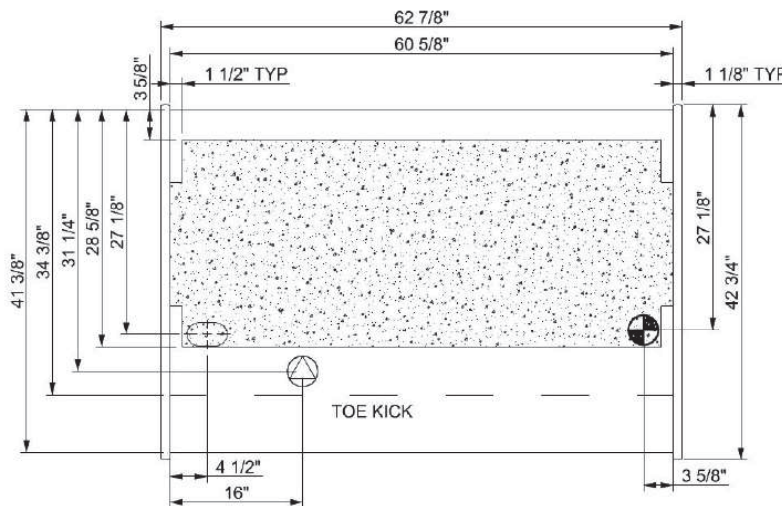
GHS 56"H Refrigerated Service Case w/ Flat Glass

**Structural Concepts®**

DELIVERING FRESH. ALWAYS.™

**Intended Environment:** Type I - Designed to operate in ambient conditions of 75°F with 55% relative humidity unless noted otherwise in system information below.

Zone	Intended Product To Be Displayed	Warmest Avg Prod Temp ° F
1	Packaged refrigerated products	40



Model Technical Specifications																
Model	L"	L1"	L2"	System Circuit Volts			Phs	Freq	Amps ***	Watts	Wires	NEMA Plug	SST	Conv. Rack BTUH	Para. Rack BTUH	Est Wt
GHS556R	N/A	60.63	3.38	Self-Contained (R449A)	Circuit #1	110-120	1	60	16.00	1343		5-20P or L5-20P	N/A	N/A	N/A	N/A

\*\*\* Does not include electric defrost on freezer models.

## Regulatory Approvals:

All Models  
 Accordance with AHRI Std 1200  
 ETL Listed to UL 471  
 ETL Listed to CAN/CSA 22.2 No. 120  
 ETL Sanitation to NSF/ANSI 7



In Accordance with  
**AHRI Std 1200**

**DOE 2017**  
 Energy Efficiency  
 Compliant

## Important Notes:

- 1) ELECTRICAL NOTE: If GFCI is required, a GFCI breaker MUST be used in lieu of a GFCI receptacle
- 2) 45" minimum door entry clearance required (without shipping skid).
- 3) Units must be shimmed during installation to ensure the unit is level and plumb.

**⚠ WARNING:** This product can expose you to chemicals, including Urethane (Ethyl Carbamate), which are known to the State of California to cause cancer and birth defects or other reproductive harm. For more information go to [www.P65Warnings.ca.gov](http://www.P65Warnings.ca.gov).