

Master Series Even-Heat Hot Top Range Attachment

Project _____
Item _____
Quantity _____
CSI Section 11400
Approved _____
Date _____

Models

- MST6S-E
- MST6T-E



MST6S-E
Shown with Optional Backguard

Standard Features

- Stainless steel front and sides
- Stainless steel door on storage base
- 6" (152mm) chromed steel adjustable legs
- 7-1/2" (191mm) stainless steel front rail
- Extra heavy cast-iron top sections
- Stainless steel burner box bottom
- Storage base interior of aluminized steel
- 17" (432mm) wide even-heat hot top steel plate
- One 27,000 BTU (7.90 kW) "H" style cast iron burner
- Electric Spark ignition on all pilots
- Sentry total flame failure protection for all burners

Options & Accessories

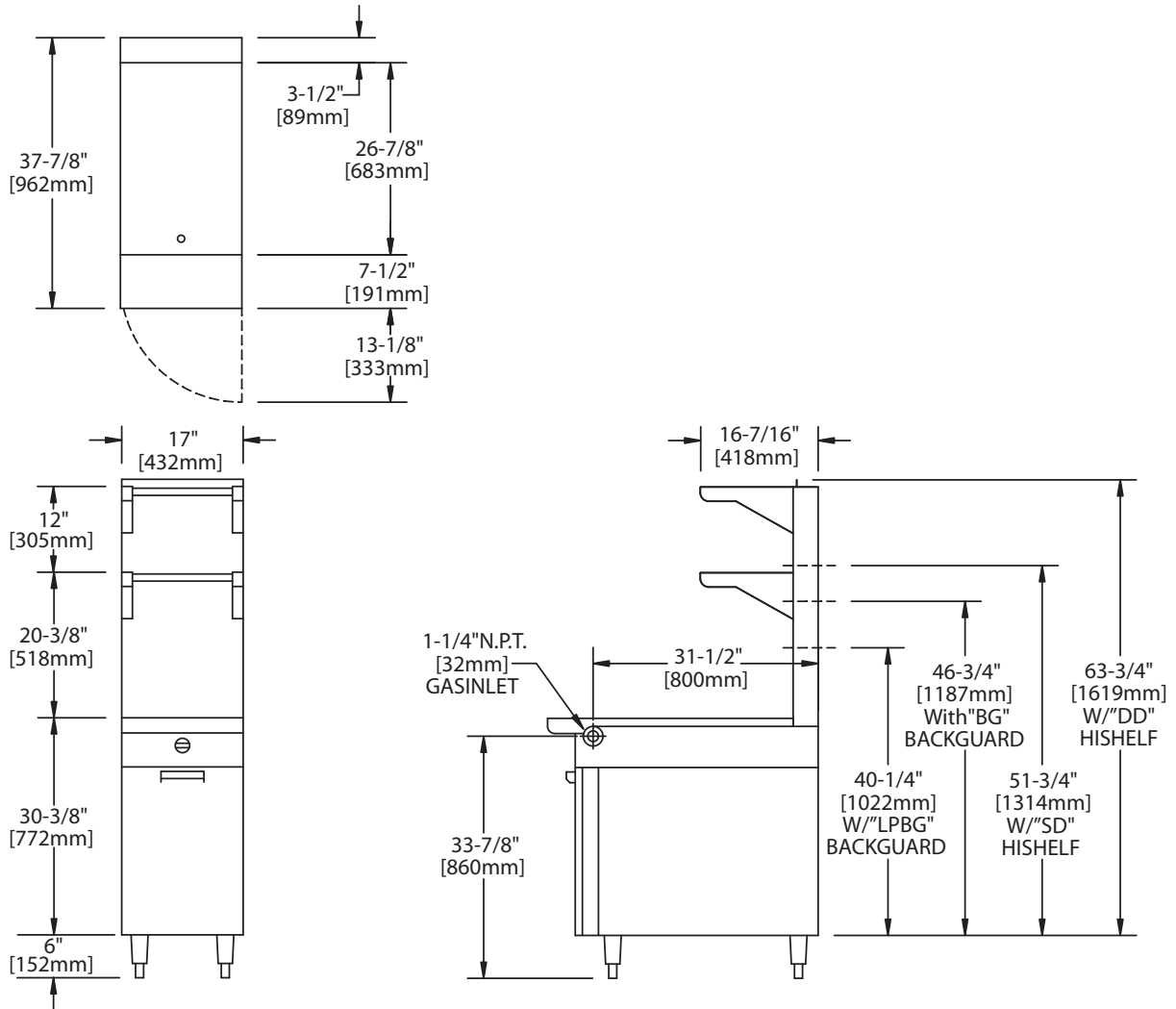
- Stainless steel common front rail up to 102" (2591mm) wide (two or more units in a battery)
- Stainless steel main back
- Gas regulator 3/4" or 1-1/4"
- Gas shut off valve; 3/4", 1" or 1-1/4" NPT
- Gas flex hose & quick disconnect (3/4", 1" or 1-1/4" NPT x 5') w/ restraining device, please specify
- Rear gas connection, 3/4" or 1" NPT
- End caps and cover (NC, specify)
- Polyurethane non-marking swivel casters (4) w/front brakes
- 6" (152mm) stainless steel adjustable legs
- Modular stand, (T model)
- Dais base (W/O legs, S model)
- Storage base shelf of aluminized or stainless steel
- Stainless steel tubular high shelf, single or double-deck
- Stainless steel backguard: 10" (354mm), 17" (432mm) or 33" (838mm) H
- 230 volt, 50 cycle components electric ignition (export)

Specifications

Heavy-duty gas range attachment with storage base, Model MST6S-E. One (1) even-heat hot top. 17" (432mm) wide x 38" (965mm) deep, including 7 1/2" (191mm) deep stainless steel front rail. Stainless steel front and sides. 27,000 BTU (7.90 kW) total. Natural or propane gas. Sentry total flame failure protection for all burners. Also available with modular top, suffix T.

NOTE: Ranges supplied with casters must be installed with an approved restraining device.





Product	Width: In(mm)	Depth: In(mm)	Height: In(mm) (w/ NSF Legs)	Height: In(mm) (w/o NSF Legs)	Storage Base Interior: in(mm)		
					Width	Depth	Height
MST6S-E	17(432)	38(965)	36-3/8(924)	30-3/8(772)	14(356)	32-1/2(826)	20-1/2(519)
MST6T-E	17(432)	38(965)	36-3/8(924) w/stand	9-1/2 (241) w/o stand*	N/A	N/A	N/A

*Modular top has 1-1/2" seating flanges.

INPUT-BTU/hr (Natural or Propane Gas)	MST6S-E	MST6T-E
Total Top Sections	27,000 (7.90kW)	27,000 (7.90kW)

S=Range w/Storage Base T=Modular Top

Installation Notes			Shipping Wt: (Lb/Kg) - Cu Ft
Combustible Wall Clearances ¹	Entry Clearances	Operating Pressure	
Sides: 14" (356mm) Back: 6" (152mm)	Crated: 22 1/4" (565mm) Uncrated: 17-1/4" (438mm)	Natural: 6" WC (15mbar) Propane: 10" WC (25mbar)	MST6S-E 240/109 - 26 MST6T-E 145/66 - 9

¹NOTE: Installation clearance reductions are applicable only where local codes permit.

Gas input ratings shown here are for installations up to 2,000 ft. (610m) above sea level. Specify altitudes over 2,000 ft. Please specify gas type when ordering.

Electrical characteristics: 120VAC single phase 60 Hz, 1 amp 6 ft. (1.8m) NEMA 5-15P cord and plug provided. 230VAC export direct connect single phase 50 Hz, 1 amp.

Garland/U.S. Range products are not approved or authorized for home or residential use, but are intended for commercial applications only. Garland / U.S. Range will not provide service, warranty, maintenance or support of any kind other than in commercial applications

Garland reserves the right to make changes to the design or specifications without prior notice.

Garland Commercial Ranges Ltd.
1177 Kamato Road,
Mississauga, Ontario
L4W 1X4 CANADA

General Inquires 1-905-624-0260
USA Sales, Parts and Service 1-800-424-2411
Canadian Sales 1-888-442-7526
Canada or USA Parts/Service 1-800-427-6668

www.garland-group.com
6908B
07/25

