

# Master Series Heavy Duty Combination Top Range

## Models

- MST54R                      • MST54T                      • MST54S-E
- MST54S                    • MST54R-E                • MST54T-E



Model MST54R  
(valve control panel not as depicted)  
Range with Front-Fired Hot Top and  
Two Open Burners

## Standard Features

- Standard Features:
- Stainless steel front; black powder coat epoxy sides
- 6" (152mm) chrome steel adj. legs
- 7-1/2" (191mm) stainless steel front rail
- One heavy duty cast iron front-fired top on left
- Removable cast iron ring and lid with 3 individually controlled jet burners; 40,000 BTU (11.71kW) total, 30,000 BTU (8.78kW) for CSA approved propane models
- Two (2), 2-piece Starfire open burners w/removable heads rated 30,000 BTU (8.78kW) CE approved or 35,000 BTU (10.25kW) CSA approved models, (natural or propane gas)
- Removable ring grate bowl over each burner
- Cast iron top grates
- One piece stainless steel drip tray
- Piezo spark ignition for oven.
- 40,000 BTU (11.72kW) natural gas, 35,000 BTU (10.25kW) propane gas cast iron oven burner
- Fully porcelainized oven interior
- Electric Spark ignition on all pilots
- Suffix -E models
- Sentry total flame failure protection for all burners

## Options & Accessories

- Hot top section on right - specify
- Stainless steel oven interior
- Stainless steel left, right, both sides or main back
- Stainless steel common front rail up to 102" (2591mm) wide (two or more units in a battery)
- Convection oven base, add C to model #, e.g. MST54RC
- Additional oven rack
- Rear gas connection 3/4", 1" or 1-1/4" NPT, left or right mount add 5-1/4" (133mm) to exterior range width
- Gas regulator 3/4" or 1-1/4"
- Gas shut off valve; 3/4", 1" or 1-1/4" NPT
- Gas flex hose & quick disconnect (3/4", 1" or 1-1/4" NPT x 5') w/ restraining device, please specify
- End caps and cover (NC, specify)
- Polyurethane non-marking swivel casters (4) w/ front brakes
- Dais base (not for use with "RC" oven)
- 6" (152mm) stainless steel adj. legs
- Storage base shelf of aluminized or stainless steel.
- Stainless steel tubular high shelf, single or double deck
- Stainless steel backguard: 10" (354mm), 17" (432mm) or 33" (838mm)
- 230 volt, 50 cycle components, RC motor and/or electric ignition (export)
- Celsius dial for oven thermostat (NC)

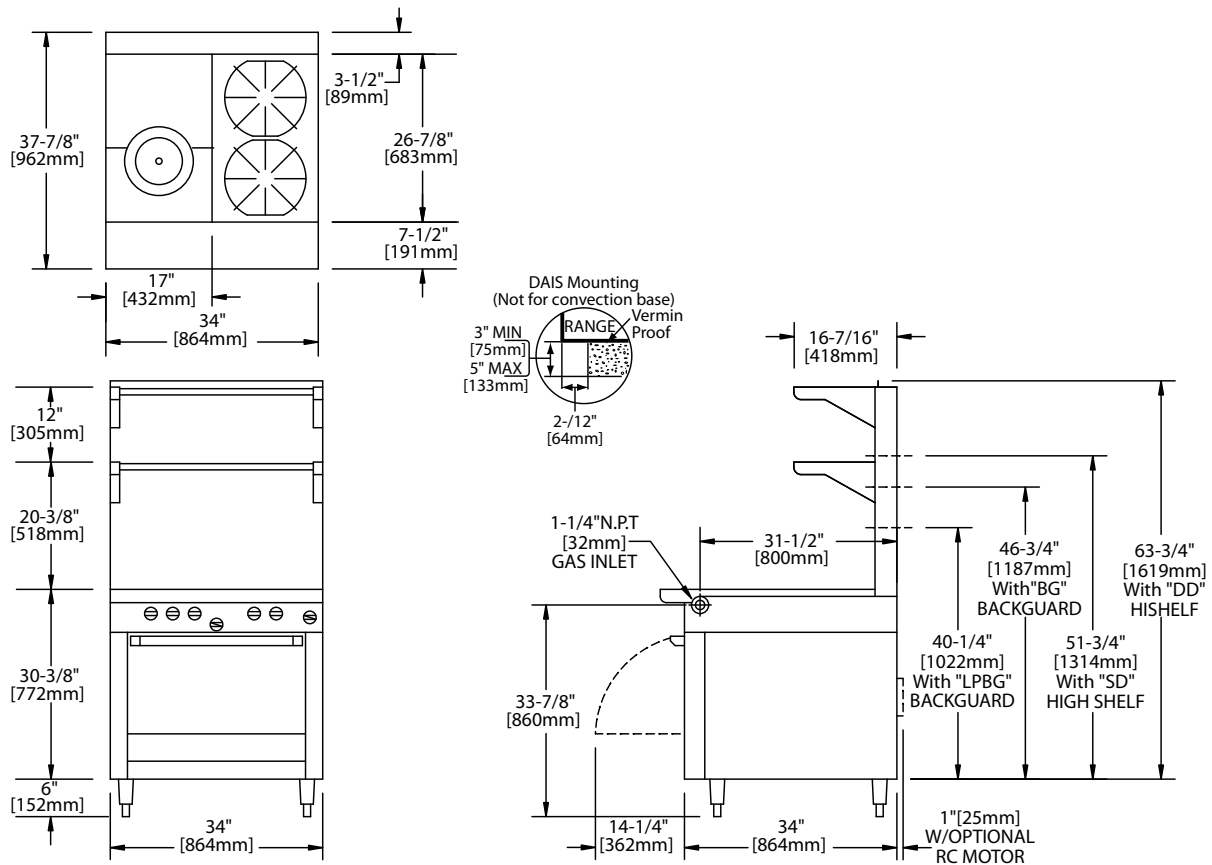
## Specifications

Heavy duty gas range with oven, Model MST54R, combination top consisting of one 17" (432mm) wide front fired spectro-heat hot top, 40,000 BTU (11.71kW) on left and two 30,000 BTU (8.78kW) StarFire open burners. Sentry total flame failure protection for all burners. Heavy duty cast iron top grates/ring grates. 34" (864mm) wide x 38" (965mm) deep, including 7-1/2" (191mm) deep stainless steel front rail. Porcelain enamel oven with 40,000 BTU (11.72kW), cast iron oven burner. Stainless steel front with black powder epoxy sides. Natural or Propane gas available. Also available with storage base w/ doors, suffix S, and modular top, suffix T.

NOTE: Ranges supplied with casters must be installed with an approved restraining device.



# Master Series Heavy Duty Combination Top Range



| Product | Width:<br>In(mm) | Depth:<br>In(mm) | Height: In(mm)<br>(w/ NSF Legs) | Height: In(mm)<br>(w/o NSF Legs) | Oven/Storage Base Interior: in(mm) |             |             |
|---------|------------------|------------------|---------------------------------|----------------------------------|------------------------------------|-------------|-------------|
|         |                  |                  |                                 |                                  | Width                              | Depth       | Height      |
| MST54R  | 34(864)          | 38(965)          | 36-3/8(924)                     | 30-3/8(772)                      | 26-1/4(667)                        | 29(737)**   | 13-1/2(343) |
| MST54S  | 34(864)          | 38(965)          | 36-3/8(924)                     | 36-3/8(924)                      | 26(665)                            | 30-1/2(773) | 20-1/2(519) |
| MST54T  | 34(864)          | 38(965)          | 36-3/8(924 w/stand)             | 9-1/2(241) w/o stand*            | N/A                                | N/A         | N/A         |

\*Modular top has 1-1/2" seating flanges. \*\*RC oven is 25" (635mm) deep.

| INPUT-BTU/hr (kW)                   | MST54R(C)      |                | MST54S & MST54T |                | Gas input ratings shown here are for installations up to 2,000 ft. (610m) above sea level. Specify altitudes over 2,000 ft. |
|-------------------------------------|----------------|----------------|-----------------|----------------|---|
|                                     | Natural        | Propane        | Natural         | Propane        |   |
| Hot Top Section CE Approved Models  | 40,000 (11.71) | 40,000 (11.71) | 40,000 (11.71)  | 40,000 (11.71) |   |
| Hot Top Section CSA Approved Models | 40,000 (11.71) | 30,000 (8.78)  | 40,000 (11.71)  | 30,000 (8.78)  |   |
| Open Top: CE Approved Models        | 60,000 (17.57) | 60,000 (17.57) | 60,000 (17.57)  | 60,000 (17.57) |   |
| Open Top: CSA Approved Models       | 70,000 (20.50) | 70,000 (20.50) | 70,000 (20.50)  | 70,000 (20.50) |   |
| Oven: CE and CSA Approved Models    | 40,000 (11.71) | 35,000 (10.25) | N/A             | N/A            |   |

RC=Range w/Convection Oven R=Range w/Oven S=Range w/Storage Base T=Modular Top

| Installation Notes                       |                           |                          | Shipping: Wt (Lb/Kg) Cu Ft  |
|--|---------------------------|--------------------------|---|
| Combustible Wall Clearances <sup>1</sup> | Entry Clearances          | Operating Pressure       | MST54R 475/216 – 50<br>MST54S 375/170 – 50<br>MST54T 285/130 – 20 |
| Sides: 14" (356mm)                       | Crated: 39-1/4" (997mm)   | Natural: 6" WC (15mbar)  |   |
| Back: 6" (152mm)                         | Uncrated: 34-1/4" (870mm) | Propane: 10" WC (25mbar) |   |

<sup>1</sup>NOTE: Installation clearance reductions are applicable only where local codes permit.

Electrical characteristics: **Each RC oven** – 1/3 HP motor, 120 VAC, single phase, 3.4 amps (c/w 6 ft. (1.8m) power cord with NEMA 5-15P plug). 230 VAC export is direct connect, single phase, 50 Hz. **Electrical Spark Ignition** (suffix "E") – 0.1 amps for 115V 60Hz 1 Phase (c/w NEMA 5-15P cord & plug on models with out RC oven) and 0.05 amps for 240C 50Hz 1 phase.

Please specify gas type when ordering.

Welbilt reserves the right to make changes to the design or specifications without prior notice.

**Garland Commercial Ranges Ltd.**  
1177 Kamato Road,  
Mississauga, Ontario  
L4W 1X4 CANADA

**General Inquires 1-905-624-0260**  
**USA Sales, Parts and Service 1-800-424-2411**  
**Canadian Sales 1-888-442-7526**  
**Canada or USA Parts/Service 1-800-427-6668**

[www.garland-group.com](http://www.garland-group.com)  
6929  
12/18