

Master Series Heavy Duty Open Burner Top Range

Models

- MST43R • MST43T • MST43S-E
- MST43S • MST43R-E • MST43T-E



Model MST43R
(valve control panel not as depicted)
Range With
Six Open Star Burners

Standard Features

- Stainless steel front and sides
- 6" (152mm) chrome steel adj. legs
- 7-1/2" (191mm) stainless steel front rail
- Six (6) 24,000 BTU, (7.03 kW) natural gas or 20,000 BTU, (5.86kW) propane gas Starfire burners
- Removable ring grate bowl over each burner
- Cast iron top grates
- One-piece Stainless Steel drip tray
- Piezo spark ignition for oven
- Fully porcelainized oven interior
- 40,000 BTU, (11.72 kW) natural gas, 35,000 BTU (10.25kW) propane gas cast iron oven burner
- Storage base models with aluminized steel interiors, (Suffix S/S-E)
- Modular Top models (Suffix T/T-E)
- Electric Spark ignition on all pilots Suffix -E models
- Sentry total flame failure protection for all burners

Options & Accessories

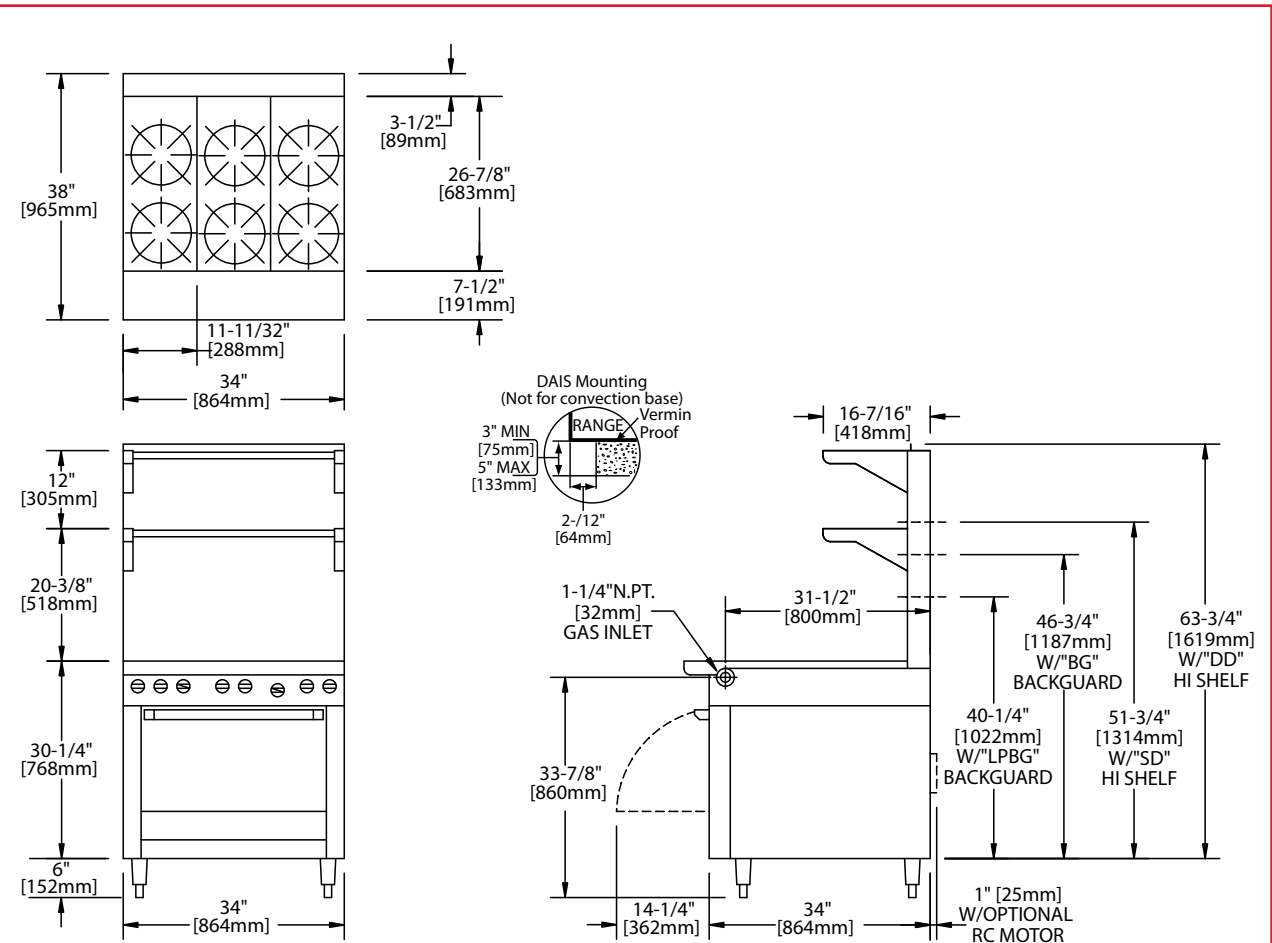
- Stainless steel common front rail up to 102" (2591mm) wide (two or more units in a battery)
- Stainless steel main back
- Stainless steel oven interior
- Convection oven base, add C to Model No., e.g. MST43RC
- Additional oven rack
- Gas shut off valve; 3/4", 1" or 1-1/4" NPT
- Gas flex hose & quick disconnect (3/4", 1" or 1-1/4" NPT x 5') w/restraining device, please specify
- Rear gas connection; 3/4", 1", or 1-1/4" NPT
- End caps and cover, NC, specify
- 4 Polyurethane non-marking swivel casters w/front brakes
- 6" (152mm) stainless steel adj. legs
- Storage base shelf of aluminized or stainless steel
- Stainless steel tubular high shelf, single or double deck
- Stainless steel backguard: 10" (354mm), 17" (432mm) or 33" (838mm)
- 230 volt, 50 cycle components, RC motor and/or electric ignition (export)
- Celsius dial for oven thermostat, NC

Specifications

Heavy-duty gas range with oven, with six (6) 24,000 BTU, (7.03kW), Starfire burners. Sentry total flame failure protection for all burners. Heavy-duty cast iron top grates/ring grates. 34" (864mm) wide x 38" (965mm) deep, including 7-1/2" (191mm) deep stainless steel front rail. Porcelain enamel oven interior with 40,000 BTU, (11.72 kW), cast iron burner. Stainless steel front and sides. Natural or propane gas. Also available with storage base with doors, suffix S, and modular top, suffix T

NOTE: Ranges supplied with casters must be installed with an approved restraining device.





Product	Width: In(mm)	Depth: In(mm)	Height: In(mm) (w/ NSF Legs)	Height: In(mm) (w/o NSF Legs)	Oven/Storage Base Interior: in(mm)		
					Width	Depth	Height
MST43R(E)	34(864)	38(965)	36-1/4(921)	30-1/4(768)	26-1/4(667)	29(737)**	13-1/2(343)
MST43S(E)	34(864)	38(965)	36-1/4(921)	30-1/4(768)	26(665)	30-1/2(773)	20-1/2(519)
MST43T(E)	34(864)	38(965)	36-3/8(924) w/stand	9-1/2(241) w/o stand*	N/A	N/A	N/A

*Modular top has 1-1/2" seating flanges. **RC oven is 25" (635mm) deep.

INPUT-BTU/hr (Natural Gas)	MST43R(E) & MSTRC(E)	MST43S(E) & MST43T(E)	Gas input ratings shown here are for installations up to 2,000 ft. (610m) above sea level. Specify altitudes over 2,000 ft.
Top Section***	144,000 (42.19W)	144,000 (42.19kW)	
Oven ***	40,000 (11.72kW)	N/A	
Total	184,000 (53.9kW)	144,000 (42.19kW)	

RC=Range w/Convection Oven R=Range w/Oven S=Range w/Storage Base T=Modular Top

*** Top Sections rated 120,000 BTU (35.16kW) and Oven Rated 35,000 BTU (10.25kW) for Propane gas

Installation Notes			Shipping Wt: (Lb/Kg)²
Combustible Wall Clearances ¹	Entry Clearances	Operating Pressure	
Sides: 11" (279mm) Back: 6" (152mm)	Crated: 39-1/4"(997mm) Uncrated: 34-1/4" (870mm)	Natural: 6 WC (15mbar) Propane: 10 WC (25mbar)	MST43R 440/200 – 50 MST43S 340/155 – 50 MST43T 250/114 – 20

¹NOTE: Installation clearance reductions are applicable only where local codes permit.

Electrical characteristics: **Each RC oven** –1/3 HP motor, 120 VAC, single phase, 3.4 amps (c/w 6 ft. (1.8m) power cord with NEMA 5-15P plug). 230 VAC export is direct connect, single phase, 50 Hz. **Electrical Spark Ignition** (suffix "E") – 0.1 amps for 115V 60Hz 1 Phase (c/w NEMA 5-15P cord & plug on models with out RC oven) and 0.05 amps for 240C 50Hz 1 phase.

Please specify gas type when ordering.

Welbilt reserves the right to make changes to the design or specifications without prior notice.

Garland Commercial Ranges Ltd.
1177 Kamato Road,
Mississauga, Ontario
L4W 1X4 CANADA

General Inquires 1-905-624-0260
USA Sales, Parts and Service 1-800-424-2411
Canadian Sales 1-888-442-7526
Canada or USA Parts/Service 1-800-427-6668

www.garland-group.com
6925
12/18

