

- ☐ **G5025** Drench Hose Unit, Wall Mounted
- ☐ **G5025BP** Drench Hose Unit, Wall Mounted, with Backflow Preventer

**Application:** Drench hose unit for wall mounting. Ideal for rinsing any part of user's eye, face or body. *Note: Under ANSI Z358.1-2014, drench hose units supplement, but do not replace, other types of emergency equipment.*

**Spray Head:** Single FS-Plus™ spray head. Spray head has "flip top" dust cover, internal flow control and filter to remove impurities from the water flow.

**Valve:** Forged brass squeeze valve activated by stainless steel lever handle. Valve has replaceable stainless steel seat for exceptional durability. Valve closes when lever handle is released.

**Hose:** 8' reinforced PVC hose. 275 PSI maximum working pressure.

**Mounting:** Wall mounted hook holds unit on wall.

**Backflow Preventer:** In-line dual check backflow preventer installed on inlet of hose (G5025BP only). ASSE 1024 Listed. *Note: Check with code authority for compliance with local plumbing code.*

**Supply:** 3/8" NPT male swivel-type inlet.

**Sign:** ANSI-compliant identification sign.

**Quality Assurance:** Unit is completely assembled and water tested prior to shipment.

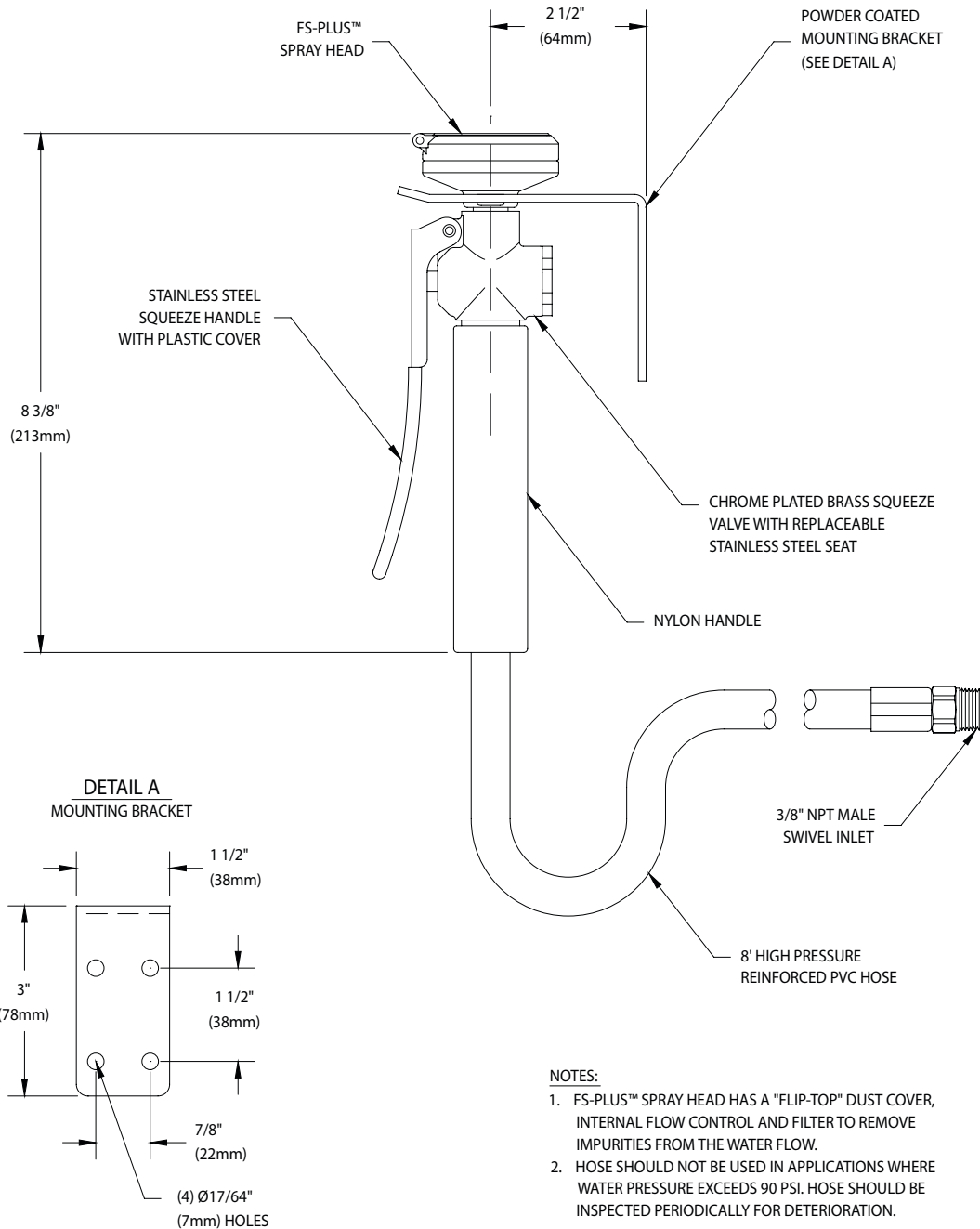
### Available Options

- ☐ **FSH** 8 ft. flexible stainless steel hose in place of PVC hose.
- ☐ **LC** Locking clip for valve handle. Valve stays open until locking clip is released.
- ☐ **VB** In-line vacuum breaker for installation between valve and spray head.
- ☐ **G3600LF** Thermostatic mixing valve precisely blends hot and cold water to deliver warm (tepid) water as required by ANSI Z358.1-2014. Refer to "Tempering Valves" section for complete technical and product selection information.





- **G5025** Drench Hose Unit, Wall Mounted
- **G5025BP** Drench Hose Unit, Wall Mounted, with Backflow Preventer



THIS SPACE FOR ARCHITECT/ENGINEER APPROVAL

Due to continuing product improvement, the information contained in this document is subject to change without notice. All dimensions are  $\pm 1/4"$  (6mm). rev. 022219

Sign Included

