

☐ **G1941** Safety Station with Eyewash, Freeze Protection Valve

Application: Combination eyewash and shower safety station. Unit is furnished with a temperature-actuated freeze protection valve. When water temperature drops below 40°F, valve automatically opens to allow water to circulate through unit, preventing water from freezing. Unit is designed so that, when drain valve is open, there are no “dead legs” of water standing in unit. Water flow stops when water temperature rises above 40°F.

Shower Head: 10" diameter orange ABS plastic with 20 GPM flow control.

Shower Valve: 1" IPS chrome plated brass stay-open ball valve. Valve is US-made with chrome plated brass ball and PTFE seals. Furnished with stainless steel actuating arm and 29" stainless steel pull rod.

Spray Head Assembly: Two GS-Plus™ spray heads. Each head has a “flip top” dust cover, internal flow control and filter to remove impurities from water flow.

Eyewash Bowl: 11-1/8" diameter stainless steel.

Eyewash Valve: 1/2" IPS chrome plated brass three-way self-draining stay-open ball valve. Valve is US-made with chrome plated brass ball and PTFE seals. After eyewash is used, valve permits water in spray head assembly to drain out.

Pipe and Fittings: Schedule 40 galvanized steel. Furnished with orange polyethylene pipe covers for high visibility and corrosion resistance.

Supply: 1-1/4" NPT female top inlet.

Waste: 1-1/4" NPT female outlet. Outlet can be positioned at either 9-1/4" or 15-3/4" above finished floor by reversing lower pipe nipples.

Sign: ANSI-compliant identification sign.

Quality Assurance: Valve and spray head assemblies are factory assembled and water tested prior to shipment.

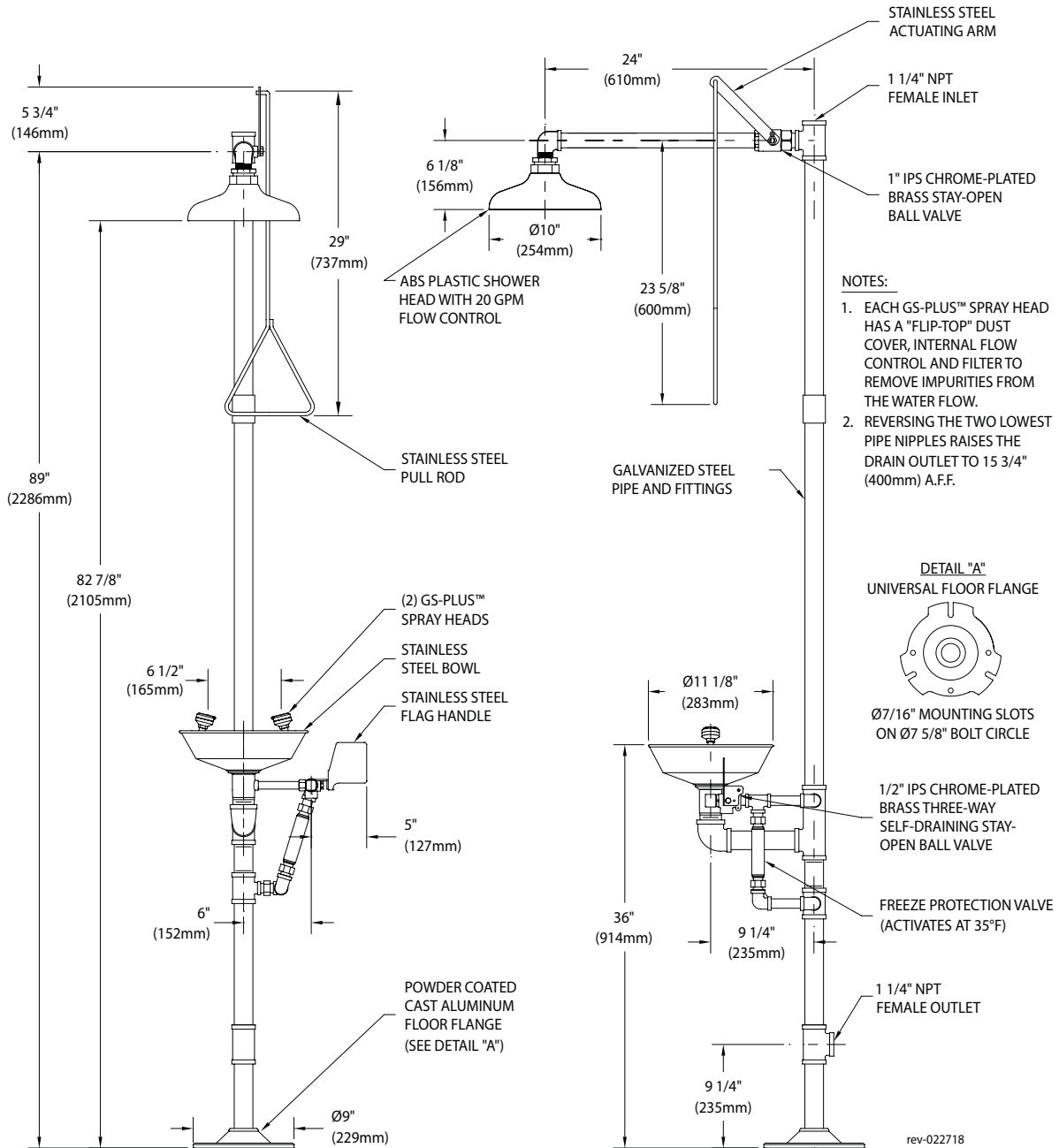
Available Options

- ☐ **GC** Powder coated finish on galvanized pipe and fittings. Available colors include orange, yellow, red and green.
- ☐ **GRN** Green ABS plastic shower head.
- ☐ **YEL** Yellow ABS plastic shower head.
- ☐ **SSH** Stainless steel shower head.
- ☐ **AP275-200** Electric flashing light and alarm horn unit for mounting on wall or vertical pipe. Light illuminates and horn sounds when eyewash or shower is activated. Furnished complete with flow switch and mounting hardware.
- ☐ **AP250-015** Modesty curtain for mounting on safety station.
- ☐ **G3800LF** Thermostatic mixing valve precisely blends hot and cold water to deliver warm (tepid) water as required by ANSI Z358.1-2014. Refer to “Tempering Valves” section for complete technical and product selection information.





□ G1941 Safety Station with Eyewash, Freeze Protection Valve



THIS SPACE FOR ARCHITECT/ENGINEER APPROVAL

Due to continuing product improvement, the information contained in this document is subject to change without notice. All dimensions are $\pm 1/4"$ (6mm). rev. 012919

Sign Included

