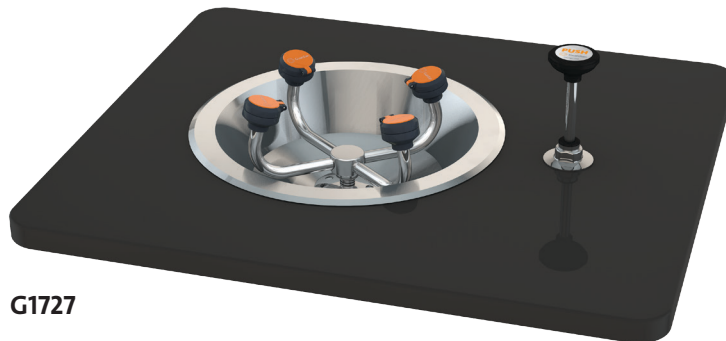
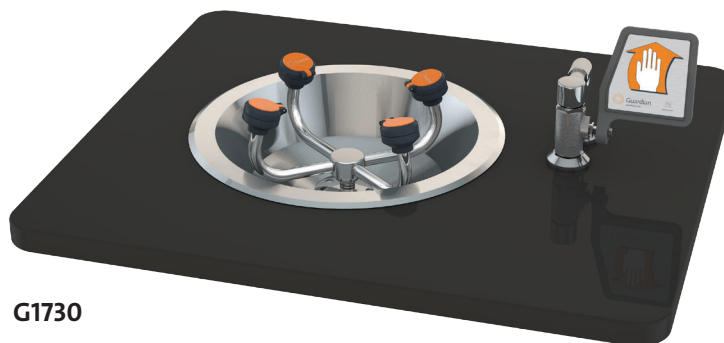




- ☐ **G1727** WideArea™ Eye/Face Wash, Recess Deck Mounted, Push-Down Valve
- ☐ **G1730** WideArea™ Eye/Face Wash, Recess Deck Mounted, Ball Valve with Flag Handle



G1727



G1730

Application: WideArea™ eye/face wash for recessed mounting in countertop. Four GS-Plus™ spray-type outlet heads deliver a flood of water over a wide area of coverage for complete rinsing of eyes and face.

Spray Head Assembly: Four GS-Plus™ spray heads. Each head has a “flip top” dust cover, internal flow control and filter to remove impurities from the water flow.

Valve: 1/2" IPS brass stay-open ball valve. G1727 has valve mounted below counter and activated by push-down knob. G1730 has valve mounted above counter and activated by flag handle.

Bowl: 13" diameter flanged stainless steel bowl for recessed mounting in countertop. Furnished with all hardware necessary for installation in counter.

Valve Supply: 1/2" NPT male inlet.

Waste: 1-1/4" NPT female outlet.

Sign: ANSI-compliant identification sign.

Quality Assurance: Unit is completely assembled and water tested prior to shipment.

Available Options

- ☐ **DC** Stainless steel dust cover for each spray head.
- ☐ **T** Chrome plated brass tailpiece and trap with 1-1/2" IPS waste connection.
- ☐ **TP** 1-1/2" OD chrome plated brass tailpiece.
- ☐ **G3600LF** Thermostatic mixing valve precisely blends hot and cold water to deliver warm (tepid) water as required by ANSI Z358.1-2014. Refer to “Tempering Valves” section for complete technical and product selection information.



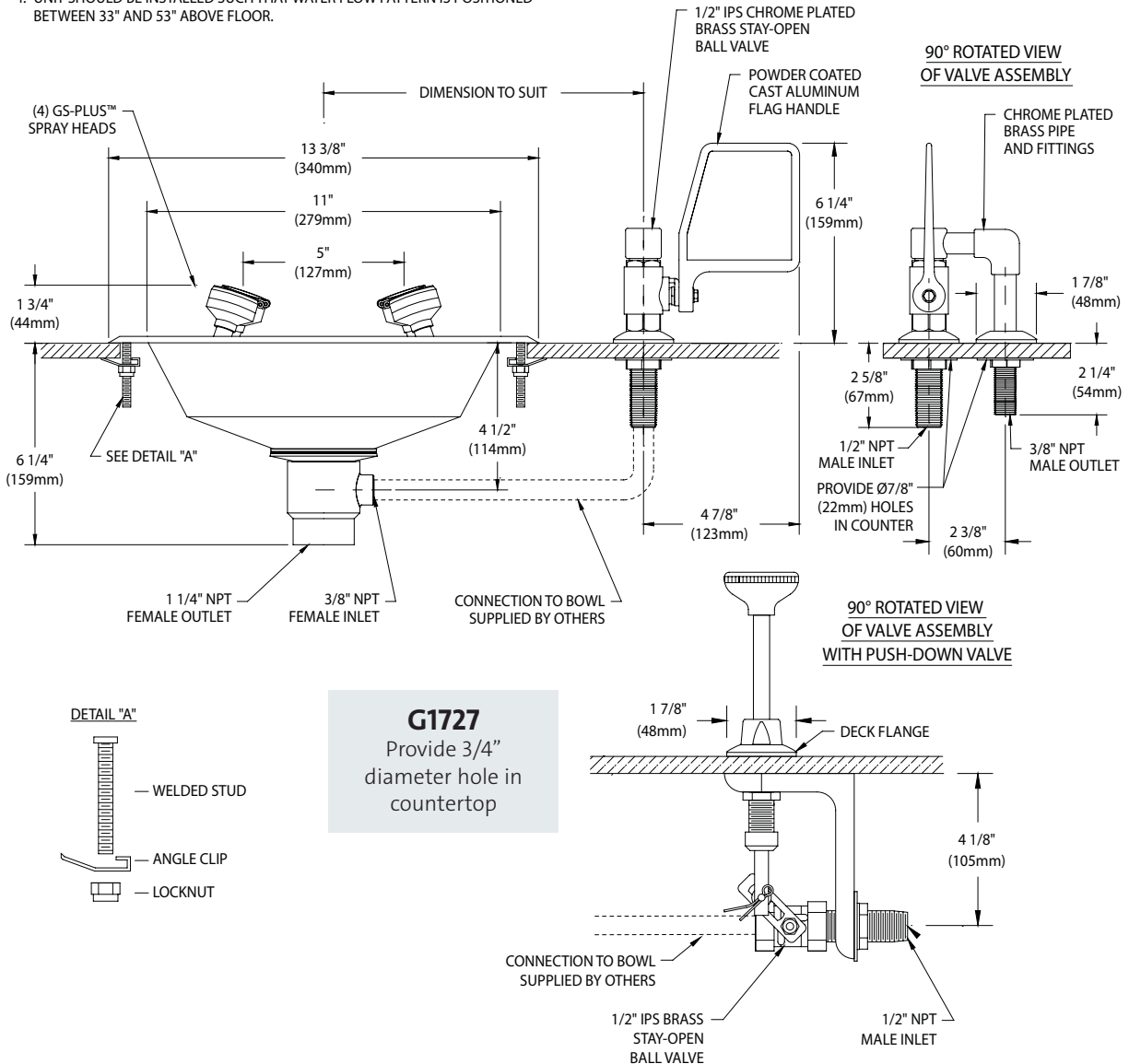
- **G1727** WideArea™ Eye/Face Wash, Recess Deck Mounted, Push-Down Valve
- **G1730** WideArea™ Eye/Face Wash, Recess Deck Mounted, Ball Valve with Flag Handle

NOTES:

1. EACH GS-PLUS™ SPRAY HEAD HAS A "FLIP-TOP" DUST COVER, INTERNAL FLOW CONTROL AND FILTER TO REMOVE IMPURITIES FROM THE WATER FLOW.
2. UNIT FURNISHED COMPLETE WITH HARDWARE FOR MOUNTING ON COUNTERTOPS FROM 1/8" UP TO 1 1/2" THICK.
3. PROVIDE 12 1/2" ROUND CUT-OUT FOR BOWL.
4. UNIT SHOULD BE INSTALLED SUCH THAT WATER FLOW PATTERN IS POSITIONED BETWEEN 33" AND 53" ABOVE FLOOR.

G1730

Provide (2) 7/8" diameter holes in countertop



G1727

Provide 3/4" diameter hole in countertop

THIS SPACE FOR ARCHITECT/ENGINEER APPROVAL

Due to continuing product improvement, the information contained in this document is subject to change without notice. All dimensions are $\pm 1/4"$ (6mm). rev. 121219

Sign Included

