

### General Information

Project Name: \_\_\_\_\_

Consultant: \_\_\_\_\_

Item #: \_\_\_\_\_

Model #: \_\_\_\_\_

Quantity: \_\_\_\_\_



### Specifications

**FWR Model** Floor Water Receptacle is constructed of one piece 16GA Type 304 stainless steel. Horizontal corners are coved and the trough is integrally pitched toward a waste outlet with a stainless steel beehive strainer and a 4" OD tailpiece.

Recessed flange and 1" deep ledge for IMC grating are integral with the unit. Unit is 7½" wide and 4" deep.

Joints are TIG welded and leak-proof. Exposed surfaces finished brush satin.

FWR banded grating runs lengthwise.

2" deep FWR models are provided with flat perforated strainer.

### Product Guide

Use for Commercial and Institutional Buildings or large food prep facilities.

Unit is generally used underneath Ice Machines or in front of walk-ins or large water discharge areas, in tight spaces.

Flexible design such as custom depths make this a versatile drain trough.

Recessed flange supports floor tile and provides a grout pocket.

Setting frame for waterproof membrane and/or integral seepage flange with "weep" holes can be added for wet floor areas.



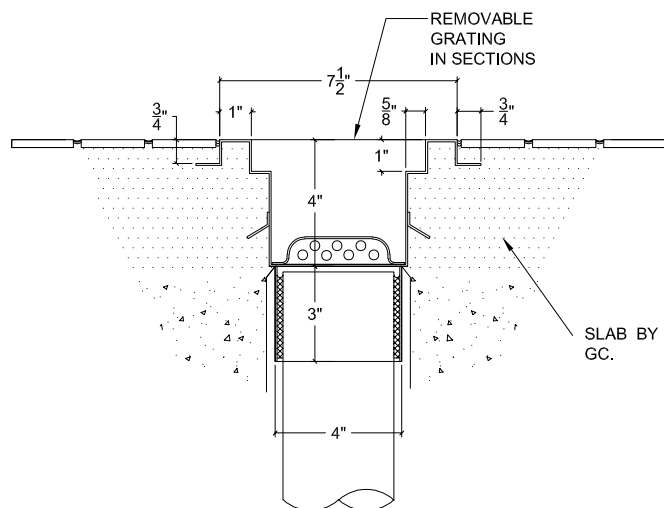
Shown with  
SQ Grid Style Grating

### Options

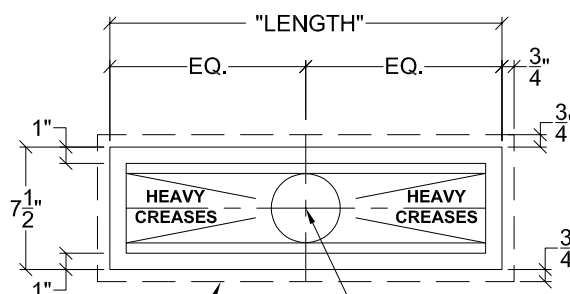
- ☐ **DOD** - 3", 3½" OD Tube (circle one)
- ☐ **WTO** - Waste Tube over 3" Long
- ☐ **AW** - Additional Wastes
- ☐ **WCP** - Waste Cup Strainers
- ☐ **BH** - Beehive Strainers (Each)
- ☐ **OCW** - Off Center Waste (Each)
- ☐ **ST12** - Scrap Tray Up to 18" Wide
- ☐ **PWT** - Perforated Waste Pipe
- ☐ **SF-2** - Special Size Setting Flange 2" Deep
- ☐ **SF-4** - Special Size Setting Flange 2" to 4" Deep
- ☐ **FSG** - Seepage Flange w/ Weep Holes
- ☐ **ST20** - Scrap Tray 20" Long
- ☐ **DSE** - Drain on the End
- ☐ **ROD** - Rim on Drain
- ☐ **BSPC** - Basket Strainer w/ Handle & Chain
- ☐ **BXD** - Box Type Drain
- ☐ **BSX** - Beehive Strainer for Box Drain
- ☐ **GA-12** - 12GA Upgrade

\*See Price List for more options

## DRAWINGS



SECTION THRU MODEL "FWR"  
STAINLESS STEEL TROUGH



DOTTED LINE INDICATES  
3/4" WIDE OUTSIDE INTEGRAL  
FLANGE (SEE SECTION)

STAINLESS STEEL STRAINER  
BOTTOM CREASED TO DRAIN

### Box Out Size

For box out dimensions, please see installation manual.

### FLOOR WATER RECEPTACLES

Model	Size (W x L)
□ FWR-24	7½" x 24"
□ FWR-30	7½" x 30"
□ FWR-36	7½" x 36"
□ FWR-48	7½" x 48"
□ FWR-60	7½" x 60"
□ FWR-72	7½" x 72"
□ FWR-84	7½" x 84"
□ FWR-96	7½" x 96"
□ FWR-108	7½" x 108"
□ FWR-120	7½" x 120"

**Note:** For longer lengths, see price list or contact factory.

Standard troughs up to 96" have one (1) waste at center. Over 96", troughs have two (2) wastes equidistant.

Specifications subject to change without notice.

FWR-012 0524