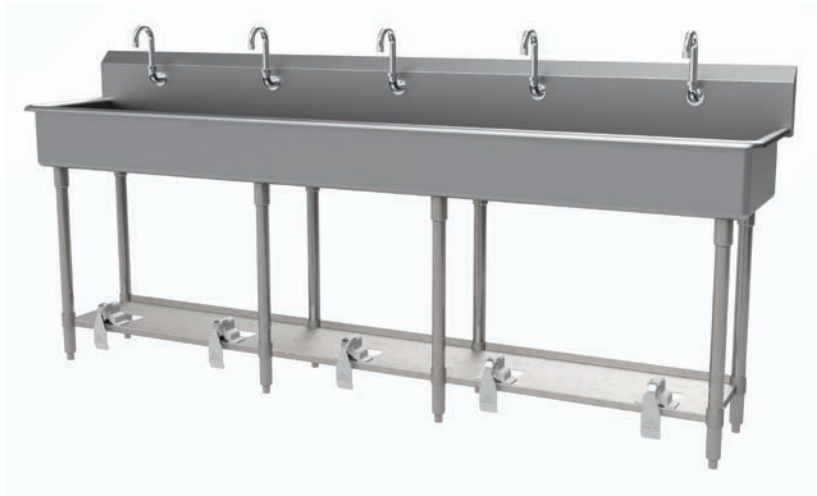




14 GAUGE STAINLESS STEEL

# FIVE STATION FLOOR MOUNTED SINK WITH TUBULAR LEGS TOE-PUSH OPERATED



Item #: \_\_\_\_\_ Qty #: \_\_\_\_\_  
Model #: \_\_\_\_\_  
Project #: \_\_\_\_\_



TOE-PUSH OPERATED

## FEATURES:

- 8 1/2" high backsplash.
- 8" sink bowl depth.
- Three stainless steel "Z" brackets supplied each unit.
- Two **K-6** 3 1/2" rear basket drains.
- Eight tubular stainless steel legs with stainless steel bullet feet.
- One stainless steel support shelf with rear turn-up.

**Toe-Push Operated:** Includes five **K-104** toe-push valves and five **K-121** spouts.

Single holes provided.

## CONSTRUCTION:

- All TIG welded.
- Welded areas blended to match adjacent surfaces and to a satin finish.
- Die formed tubular wall brackets.

## MATERIAL:

- All 14 gauge type "304" stainless steel.
- 1 5/8" tubular "304" stainless steel legs.
- Stainless steel gussets.

## MECHANICAL:

- Single faucet holes.

Model #	Length	# of Spouts	# of Legs	Wt.	Cu. Ft.
FS-WM-100FV	100"	5	8	208 Lbs.	70

[Click Here For Install Guide](#)



## MULTI-STATION ACCESSORIES & REPLACEMENT PARTS

Model	Description	QTY:	
<b>K-06</b>	Splash Mount Faucet Mounting Kit	_____	
<b>K-13</b>	Stainless Steel Soap Dispenser (Wall Mount Only)	_____	
<b>K-104</b>	Toe-Push Valve Assembly	_____	
<b>K-121</b>	Single Hole, Splash Mounted 3-1/2" Gooseneck Spout	_____	
<b>K-411</b>	Strainer Plate for 3-1/2" Drain	_____	
<b>K-508</b>	Special Sizing Charge ( <i>Larger Size Cut Down To Smaller Size</i> )	_____	
<b>TA-19</b>	Adjustable Stainless Steel Flanged Bullet Foot	_____	
		_____	
		_____	
		_____	

= Ships UPS

Standard Faucets conform to NSF 61 Standard 9 and compliance to AB 1953 Standards.



Customer Service Available To Assist You **1-800-645-3166** 8:30 am - 8:00 pm E.S.T.

For Orders & Customer Service:

Email: [customer@advancetabco.com](mailto:customer@advancetabco.com) or Fax: 631-242-6900

For Smart Fabrication™ Quotes:

Email: [smartfab@advancetabco.com](mailto:smartfab@advancetabco.com) or Fax: 631-586-2933

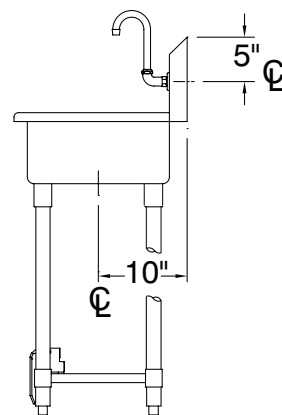
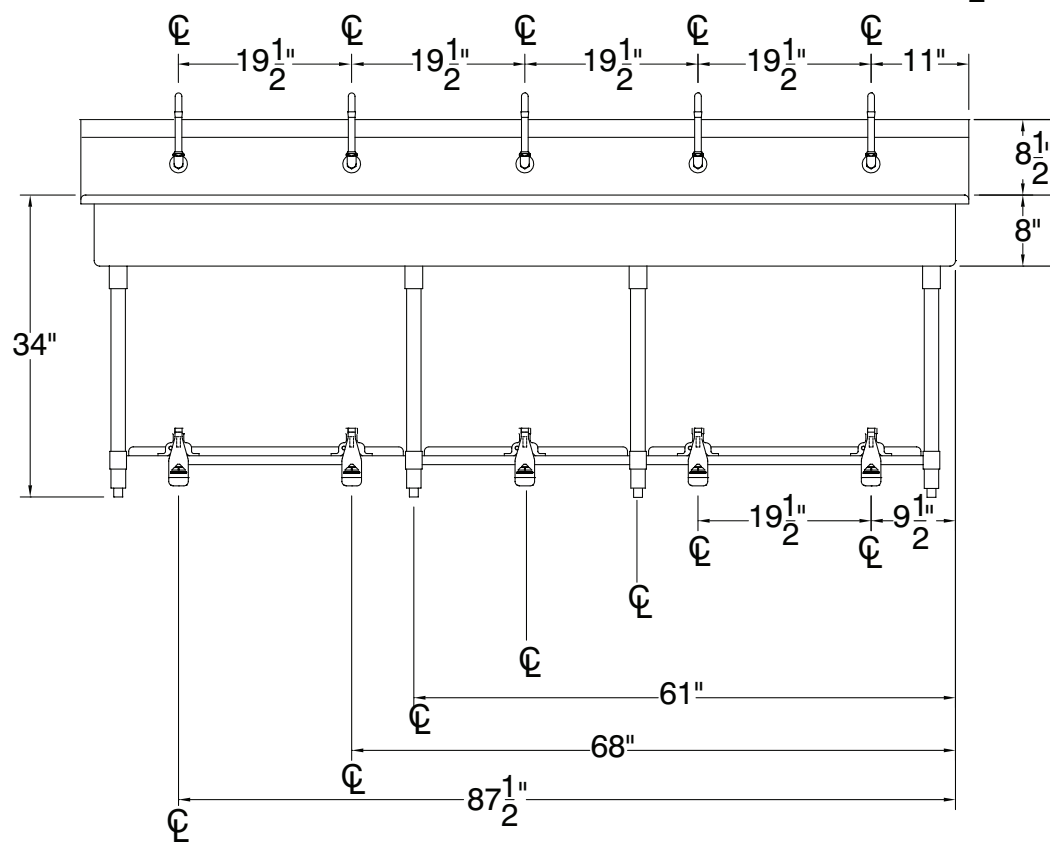
REF-JJ

**TOL  $\pm .500''$**

**ALL DIMENSIONS ARE TYPICAL**

Technical drawing of a rectangular box with the following dimensions and features:

- Overall length: 100"
- Overall width: 19 1/2"
- Top flange thickness: 1 1/2"
- Bottom flange thickness: 1 1/2"
- Internal length between centerlines: 97"
- Distance from left centerline to right centerline: 41 15/16"
- Distance from left edge to left centerline: 27 1/2"
- Distance from right centerline to right edge: 27 1/2"
- Internal height: 16"
- Right side flange thickness: 2"
- Internal features: Two circular holes with centerlines, each preceded by a centerline symbol (⊘). The space between the holes is a diamond shape.



**208 Lbs.**



**REF-JJ** 200 Heartland Boulevard, Edgewood, NY 11717-8380

ADVANCE TABCO is constantly engaged in a program of improving our products. Therefore, we reserve the right to change specifications without prior notice.

© ADVANCE TABCO, AUGUST 2018