

### General Information

Project Name: \_\_\_\_\_

Consultant: \_\_\_\_\_

Item #: \_\_\_\_\_

Model #: \_\_\_\_\_

Quantity: \_\_\_\_\_



### Specifications

**FS-C Model** Corner Utility Sink is constructed of 16GA Type 304 stainless steel, with integrated full-height apron and notched out front.

Sink bowl is 22<sup>1/2</sup>" x 22<sup>1/2</sup>" x 8<sup>1/2</sup>" deep with built-in pitch to a 2" IPS drain w/ flat strainer. Overall size is 24" x 24" x 12" high. All corners are coved and all seams are fully welded and polished to a #4 finish.

Corner Utility Sink fits any corner and notch front eliminates the need to lift heavy buckets and spillage of dirty water onto the floor.

### Product Guide

IMC Utility Sinks are easily cleanable without the use of tools. All corners are coved, and all seams are fully welded and polished.

Rugged type 300 series, 18-8 stainless steel construction, engineered to stand up under day-in and day-out abuse.

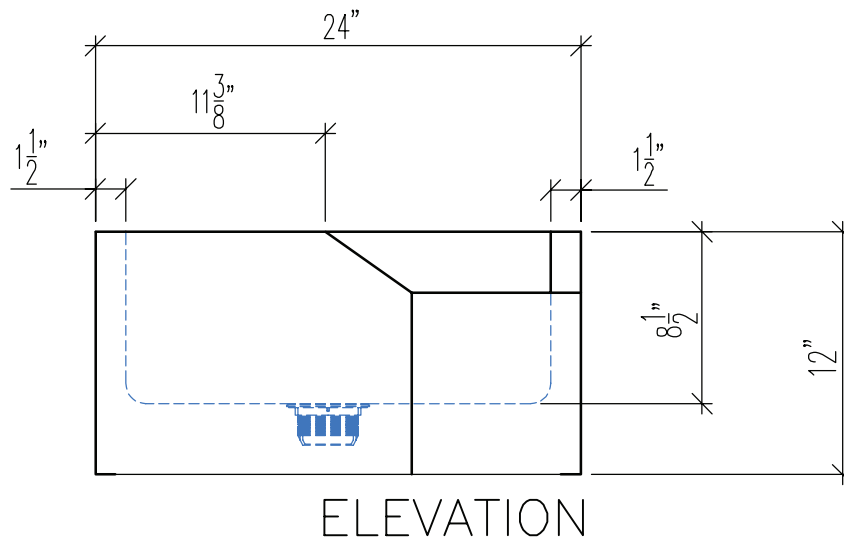
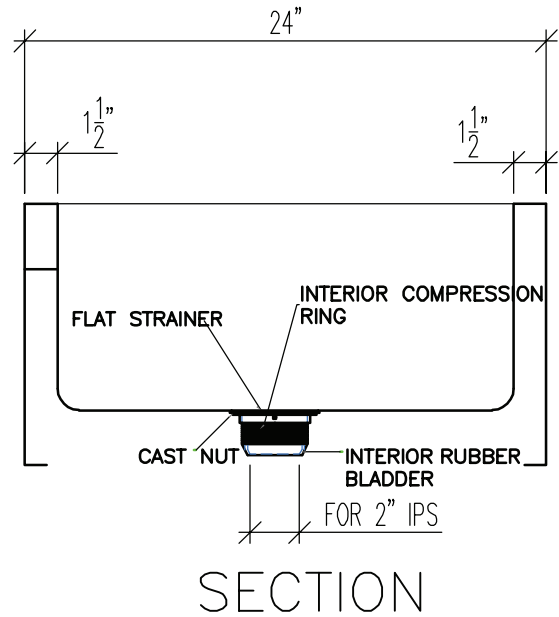
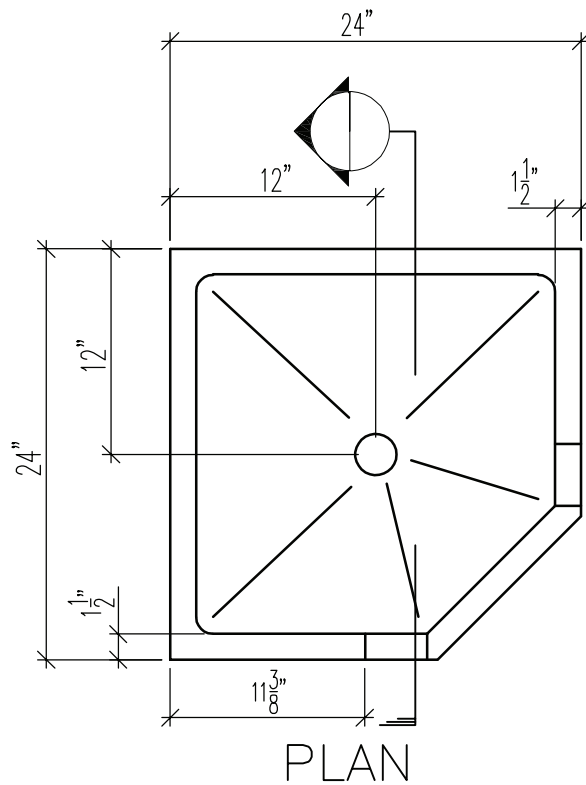
### Options

- ☐ **SSF** - Wall Faucet
- ☐ **HA** - 36" Hose
- ☐ **MH3** - Mop Holder (3)
- ☐ **MH4** - Mop Holder (4)
- ☐ **MH5** - Mop Holder (5)
- ☐ **LH6** - 6" High Legs
- ☐ **BW-36** - Custom Bowl up to 36" x 36"
- ☐ **FL48** - 48" High Flashing at Rear or Side
- ☐ **FL48-W** - Welded 48" High Flashing on 2 Sides
- ☐ **RSS8** - Rear & Side Splash 8" High
- ☐ **USHC** - Corner Utility Shelf
- ☐ **FF-50** - S/S Flanged Feet (Each)
- ☐ **SEC** - Correctional Package

\*See Price List for more options



### DRAWINGS



### TRUE CORNER FLOOR SINK

Model	Bowl Size (W x L x H)	Overall Size (W x L x H)
□ FS-C	22½" x 22½" x 8½"	24" x 24" x 12"

Specifications subject to change without notice.

FS-C-30 0524