

# Viking's Drain and Odor Control Systems

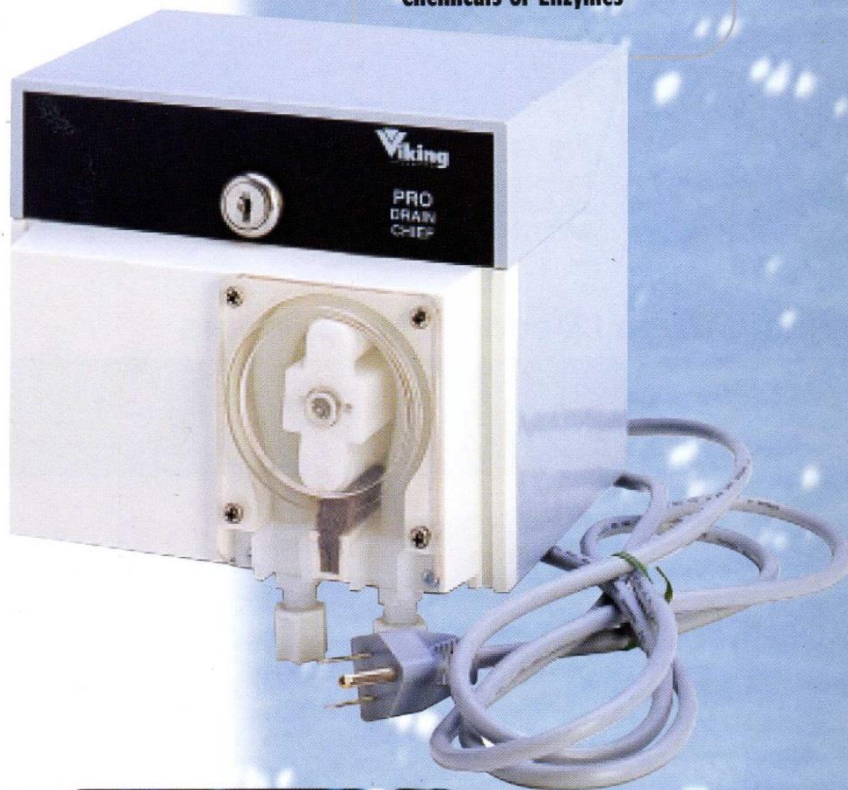
**Dispensing systems for grease-digesting chemicals (bacteria, enzyme, solvent) and odor suppression chemicals**

Viking is leading the industry with field-proven drain and odor control chemical dispensing systems. Viking's Pro Series Dispensers are known for their reliability and durability in the field and are backed by a solid one-year warranty. The 110-Volt Pro Drain Chief is the best-known dispenser in the industry for grease trap maintenance. The Pro Battery Drain Chief uses two alkaline lantern batteries to dispense where outlets are not available. A D cell battery holder is an available option on the Battery Drain Chief. Viking's Pro Scentnal is used for odor suppression around trash chutes, compactors, dumpsters, and anywhere else bad odors need to be controlled.

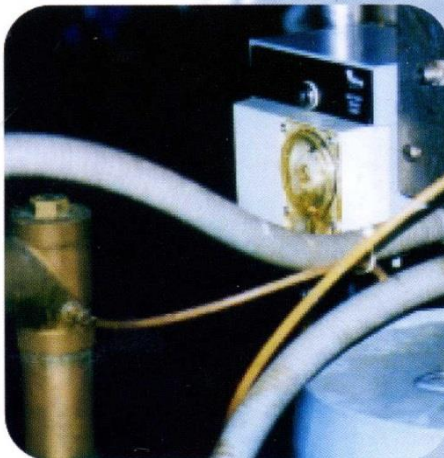
## Common Applications

*Grease trap and drain maintenance for almost any location and odor control for trash chutes and dumpsters. Also: lift stations, waste processing, water treatment, and other situations where daily chemical injection is required. Call for feasibility of other applications.*

**Pro Drain Chief**  
Control System for  
Dispensing Grease-Digesting  
Chemicals or Enzymes



**Pro Battery Drain Chief at  
work in a hospital kitchen**



**Viking**  
A DEMA Company LLC

**Visit us online at  
[www.thevikingbowl.com](http://www.thevikingbowl.com)**

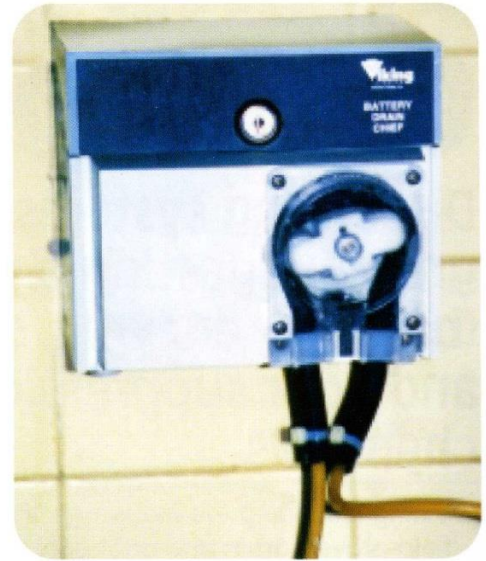


# Viking's Drain and Odor Control Systems

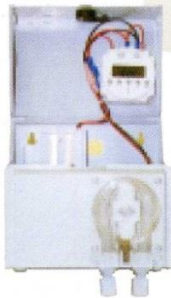


## Pro Battery Drain Chief

Control System  
for Dispensing  
Grease-Digesting  
Chemicals or  
Enzymes in  
Remote Locations



Pro Battery Drain Chief at work in  
a school kitchen



## Pro Battery Drain Chief

Digital Timer Provides Easy Programming  
and Battery Back-Up Maintains Program  
During Battery Change

## Viking Drain / Deodorizing Systems

System	Dimensions	Pump Output Per Minute	Minimum Quantity Per On Period	Maximum Quantity Per 24 Hours	Number of Feed Times Per Hour	Maximum Number of Feed Times Per 24-Hour Period	Timer Features	Power Source	Installation Hardware Included	Options	Applications
Pro Drain Chief Low Speed	7"H x 7"W x 6-1/2"D	4 ounces (116ml)	.26 ounces (7.7ml)	16.5 gallons (61.2 liters)	2	48	Potential of 48 cycles per 24-hr. period	110-volt outlet (230 VAC 50 Hz model available)	Yes	Viton tube, leg lift kit, private label, 230 VAC 50 Hz operation	Grease trap & drain maintenance-lift stations, waste-processing, water treatment, etc.
Pro Drain Chief High Speed	7"H x 7"W x 6-1/2"D	18 ounces (522ml)	1.2 ounces (34.8ml)	74 gallons (275.6 liters)	2	48	Potential of 48 cycles per 24-hr. period	110-volt outlet (230 VAC 50 Hz model available)	Yes	Viton tube, leg lift kit, private label, 230 VAC 50 Hz operation	Grease trap & drain maintenance-lift stations, waste-processing, water treatment, etc.
Pro Scentnal	7"H x 7"W x 6-1/2"D	17 ounces (493ml)	1.13 ounces (32.9ml)	70 gallons (260.4 liters)	2	48	Potential of 48 cycles per 24-hr. period	110-volt outlet (230 VAC 50 Hz model available)	Yes	Viton tube, leg lift kit, private label, 230 VAC 50 Hz operation	Trash chutes, compactors, dumpsters, and other locations where odor suppression is needed.
Pro Battery Drain Chief	7"H x 7"W x 6-1/2"D	4 ounces (116ml) at 12 volts DC*	4 ounces (116ml) at 12 volts DC*	**	8, if necessary	8	Digital timer has its own battery to retain program-8 on times per 24-hr. period, run time is programmable-minimum run time for each period is 1 minute	Two 6 volt spring top lantern batteries (not included). Option - Eight D cell batteries or plug in adapter	Yes***	D Cell battery holder, 110-volt AC to 12-volt DC plug-in adapter, leg lift kit, metal lock, private label	Remote locations where an outlet may not be available. Grease trap & drain maintenance-lift stations, waste processing, water treatment, etc.

\* Output will diminish with battery operation as battery voltage drops from 12 volts.

\*\* Run time is programmed through the timer clock; any amount of run time is available for any given on period.

\*\*\* Batteries / plug in adapter not included. Unit uses two 6-volt alkaline spring-top lantern batteries or 8 each D cell batteries with D cell option.

Note: All pump outputs listed are based on water. Product viscosity and length and rise of run will reduce actual output.

On all models except Battery Drain Chief, minimum run time per "on" period is 4 seconds; maximum run time is 10 minutes.

Call us regarding  
unusual applications.



512 Industrial Road, Nesquehoning, PA 18240  
Phone: 800-441-1343 Fax: 570-645-3679 Email: [sales@thevikingbowl.com](mailto:sales@thevikingbowl.com)  
[www.thevikingbowl.com](http://www.thevikingbowl.com)