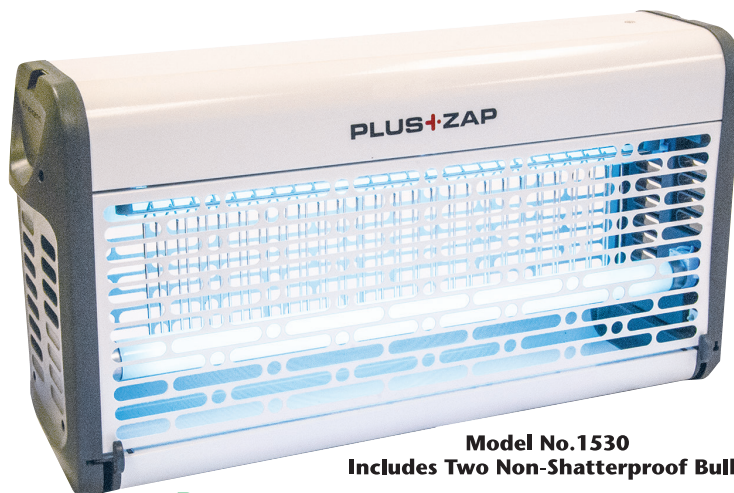


# Flying Insect

# LIGHTS

## PLUS+ZAP™

- Contemporary Styling Combined With High Specification Features Ideal For Commercial Environments
- Modern Grid Facing Provides Pleasing Aesthetic For Customer Facing Locations
- Staggered Bulbs Provide Efficient Light Output While Offset Grid Creates A Large Effective Catch Area
- Main Interlocked Catch Tray Remove Easily For Quick, Safe Maintenance
- Bulb Removal And Replacement Requires No Tools
- Mounts On Walls, Sits On Desk Tops Or Can Be Hung From Ceilings With Included Hardware

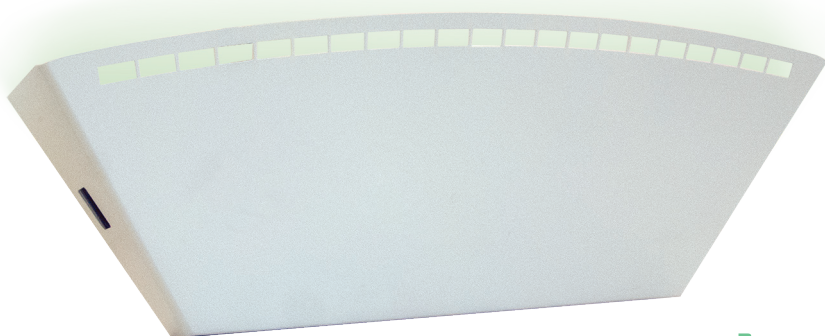


**Model No. 1530**  
**Includes Two Non-Shatterproof Bulbs**

**Power**  
30 WATTS  
**Dimensions**  
20 1/4" W x 10 1/4" H x 5" D  
**Coverage (ft²)**  
861  
**Weight**  
7 3/4 lb.

## UPLIGHTER

- Modern Styling Provides Pleasing Aesthetic For Customer Facing Locations
- Silent Operation Is The Perfect Choice For Large Lobbies, Bars And Dining Areas
- Trapped Insects Are Hidden From View
- Built-in Safety Feature, Unit Must Be Unplugged To Change Bulbs And Glue Board
- Front Panel Folds Down For Easy Maintenance
- Bulb Removal And Replacement Requires No Tools
- Wall Mount With Included Hardware



**Model No. 1515 - Includes One Non-Shatterproof Bulb And One Glue Board**

**Power**  
15 WATTS  
**Dimensions**  
21" W x 7 1/2" H x 6" D  
**Coverage (ft²)**  
98  
**Weight**  
5 1/2 lb.

## HYGIENE LIGHT

- Patented Green Light Technology
- Larger One-Piece Glue Board Than Competitive Models
- Built-in Safety Feature, Unit Must Be Unplugged To Change Bulbs And Glue Board
- Mounts On Walls, Sits On Desk Tops Or Can Be Hung From Ceilings With Included Hardware



**Model No. 1500LV - Includes Two Non-Shatterproof Bulbs And One Glue Board**

**Power**  
38 WATTS  
**Dimensions**  
22" W x 12 1/2" H x 6 3/4" D  
**Coverage (ft²)**  
850  
**Weight**  
13 lb.

### Distributed By:

FAMILY OWNED AND OPERATED

**JT EATON™**  
SINCE 1932

1393 East Highland Road • Twinsburg, OH 44087

**1-800-321-3421**  
**www.jteaton.com**