



16 GAUGE STAINLESS STEEL

TWO STATION A.D.A. WALL MOUNTED SINK WITH TUBULAR SUPPORTS ELECTRONIC OPERATED



Hands-Free Electronic Faucet



**A.D.A.
COMPLIANT**

Item #: _____ Qty #: _____
Model #: _____
Project #: _____



FEATURES:

- 8 1/2" high backsplash.
- 5" sink bowl depth.
- Two stainless steel "Z" brackets supplied each unit.
- One **K-6** 3 1/2" rear basket drain.
- Two tubular stainless steel support brackets that allow full clearance underneath.
- Electronic Operated:** Includes two **K-175** Electronic Faucets.
- Single hole provided.

CONSTRUCTION:

- All TIG welded.
- Welded areas blended to match adjacent surfaces and to a satin finish.
- Die formed tubular wall brackets.

MATERIAL:

- All 16 gauge type "304" stainless steel.
- 1 5/8" tubular "304" stainless steel wall brackets.
- Stainless steel gussets.

MECHANICAL:

- Single faucet holes.

| Model # | Length | # of Faucets | # of Wall Supports | Wt. lbs. | Cu. Ft. |
|---------------|--------|-----------------|-----------------------|-------------|------------|
| FC-WM-40EFADA | 40" | 2 | 2 | 62 lbs. | 15 |

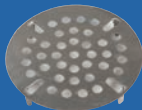
[Click Here For Install Guide](#)



MULTI-STATION ACCESSORIES & REPLACEMENT PARTS



K-175



K-411



K-13

| Model | Description | QTY: |
|-------|--|-------|
| K-6 | 3 1/2" Drain (1 1/2" I.P.S.) | _____ |
| K-13 | Stainless Steel Soap Dispenser (Wall Mount Only) | _____ |
| K-175 | Single Hole, Splash Mounted 3-1/2" Electronic Faucet | _____ |
| K-411 | Strainer Plate for 3-1/2" Drain | _____ |
| K-508 | Special Sizing Charge (Larger Size Cut Down To Smaller Size) | _____ |
| TA-19 | Adjustable Stainless Steel Flanged Bullet Foot | _____ |

= Ships UPS

FLOOR STANDING LEGS MODIFICATION

Converts Wall Mounted FS-WM SERIES Sink To A Free Standing Floor Unit.

- Stainless Steel Legs with Flanged Feet
- Sides and Rear Cross Bracing

| Model # | Fits Sink Length | QTY: |
|----------|---------------------|-------|
| FS-CB-40 | 40" | _____ |



Standard Faucets conform to NSF 61 Standard 9 and compliance to AB 1953 Standards.

WARNING: Equipment that include faucets on this page may contain a chemical known to the State of California to cause cancer, birth defects or other reproductive harm.



Customer Service Available To Assist You 1-800-645-3166 8:30 am - 8:00 pm E.S.T.

For Orders & Customer Service:

Email: customer@advancetabco.com or Fax: 631-242-6900

For Smart Fabrication™ Quotes:

Email: smartfab@advancetabco.com or Fax: 631-586-2933

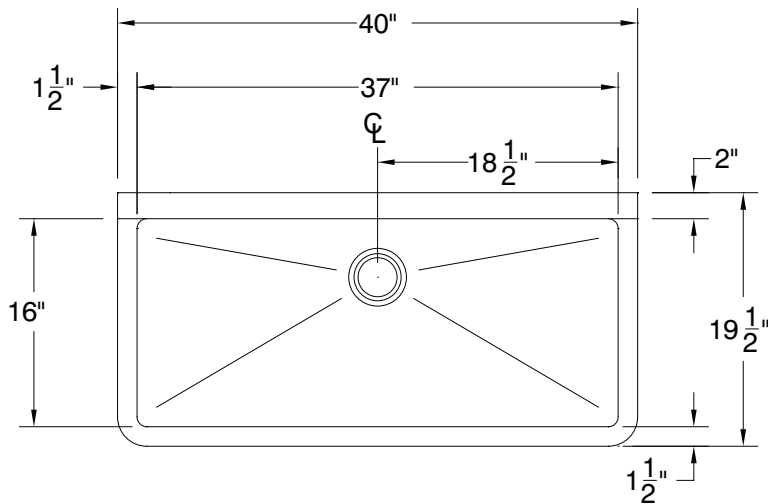
REF-JJ

DETAILS and SPECIFICATIONS

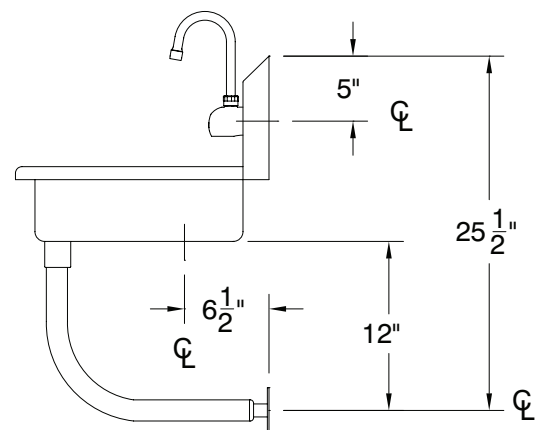
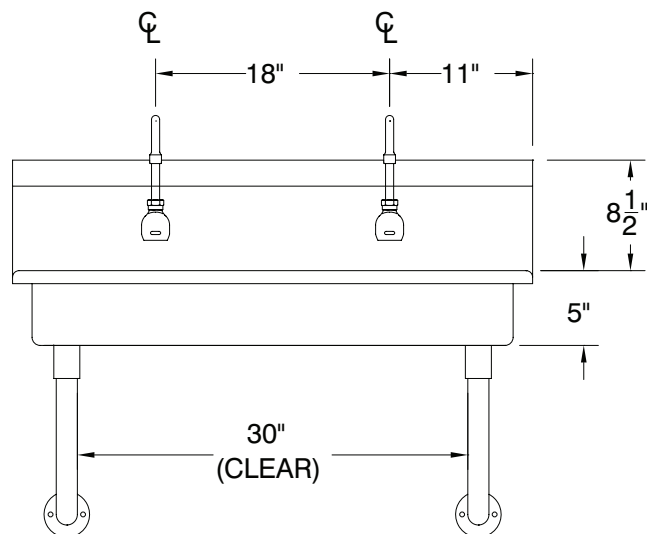
TOL $\pm .500''$

ALL DIMENSIONS ARE TYPICAL

FC-WM-40EFADA



A.D.A.
COMPLIANT



62 Lbs.

