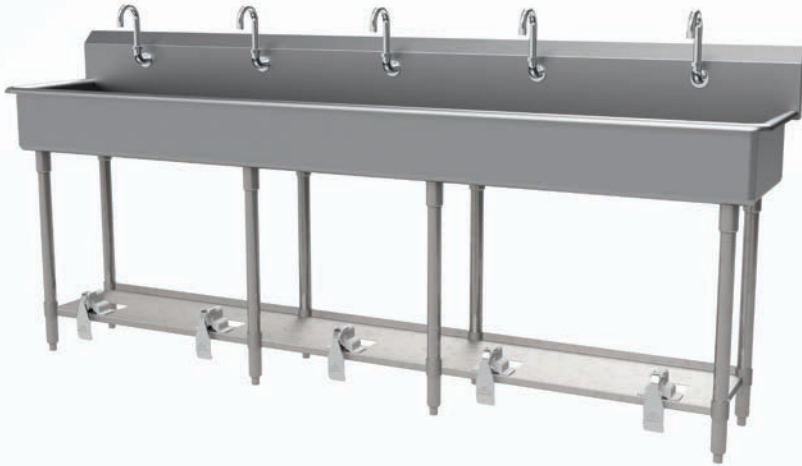




16 GAUGE STAINLESS STEEL

FIVE STATION FLOOR MOUNTED SINK WITH TUBULAR LEGS

TOE-PUSH OPERATED



Item #: _____ Qty #: _____

Model #: _____

Project #: _____



TOE-PUSH OPERATED

FEATURES:

- 8 1/2" high backsplash.
- 8" sink bowl depth.
- Three stainless steel "Z" brackets supplied each unit.
- Two **K-6** 3 1/2" rear basket drains.
- Eight tubular stainless steel legs with stainless steel bullet feet.
- One stainless steel support shelf with rear turn-up.
- Toe-Push Operated:** Includes five **K-104** toe-push valves and five **K-121** spouts.
- Single holes provided.

CONSTRUCTION:

- All TIG welded.
- Welded areas blended to match adjacent surfaces and to a satin finish.
- Die formed tubular wall brackets.

MATERIAL:

- All 16 gauge type "304" stainless steel.
- 1 5/8" tubular "304" stainless steel legs.
- Stainless steel gussets.

MECHANICAL:

- Single faucet holes.

Model #	Length	# of Spouts	# of Legs	Wt. Lbs.	Cu. Ft.
FC-WM-100FV	100"	5	8	180 Lbs.	70

[Click Here For Install Guide](#)



MULTI-STATION ACCESSORIES & REPLACEMENT PARTS

Model	Description	QTY:
K-06	Splash Mount Faucet Mounting Kit	_____
K-13	Stainless Steel Soap Dispenser (Wall Mount Only)	_____
K-104	Toe-Push Valve Assembly	_____
K-121	Single Hole, Splash Mounted 3-1/2" Gooseneck Spout	_____
K-411	Strainer Plate for 3-1/2" Drain	_____
K-508	Special Sizing Charge (<i>Larger Size Cut Down To Smaller Size</i>)	_____
TA-19	Adjustable Stainless Steel Flanged Bullet Foot	_____



K-121



K-104



K-13



K-411

TA-19



K-06

= Ships UPS

Standard Faucets conform to NSF 61 Standard 9 and compliance to AB 1953 Standards.

WARNING: Equipment that include faucets on this page may contain a chemical known to the State of California to cause cancer, birth defects or other reproductive harm.



Customer Service Available To Assist You **1-800-645-3166** 8:30 am - 8:00 pm E.S.T.

For Orders & Customer Service:

Email: customer@advancetabco.com or Fax: 631-242-6900

For Smart Fabrication™ Quotes:

Email: smartfab@advancetabco.com or Fax: 631-586-2933

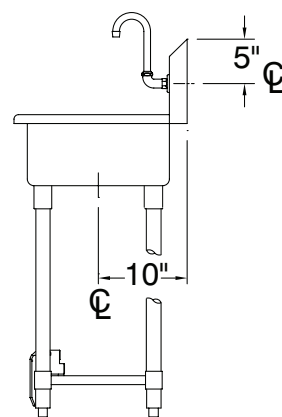
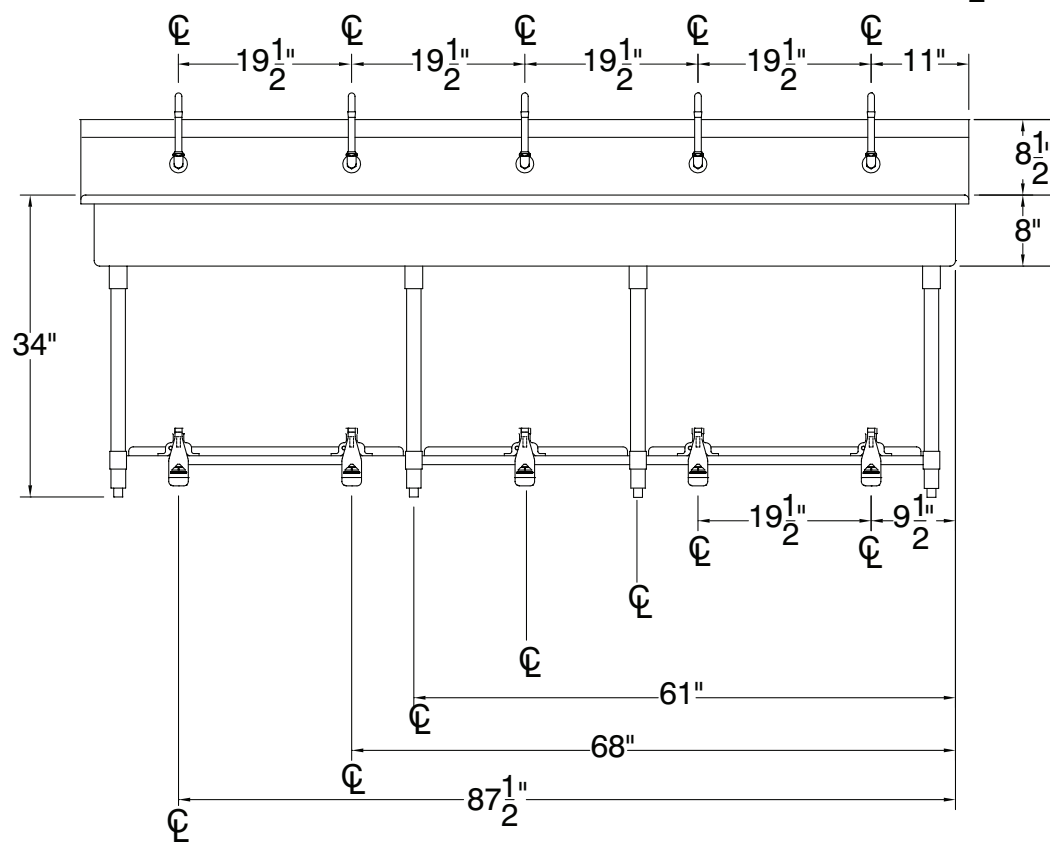
REF-JJ

TOL $\pm .500''$

ALL DIMENSIONS ARE TYPICAL

Technical drawing of a rectangular box with the following dimensions and features:

- Overall length: 100"
- Overall width: 19 1/2"
- Top flange width: 1 1/2"
- Bottom flange width: 1 1/2"
- Internal length (between center lines): 97"
- Distance from left end to first center line: 27 1/2"
- Distance between center lines: 41 15/16"
- Distance from second center line to right end: 27 1/2"
- Internal height: 16"
- Top flange height: 2"
- Internal features: Two circular holes with center lines, and a diamond-shaped internal structure between them.



180 Lbs.



REF-JJ 200 Heartland Boulevard, Edgewood, NY 11717-8380

ADVANCE TABCO is constantly engaged in a program of improving our products. Therefore, we reserve the right to change specifications without prior notice.

© ADVANCE TABCO, AUGUST 2018