

**4 WHEEL DEEP FRAME PALLET TRUCK**  
 MATERIAL: STEEL  
 WHEEL: PNEUMATIC  
 CAPACITY: 1,000 LBS  
 HEIGHT: 54"  
 WIDTH: 25-3/4"  
 DEPTH: 36"  
 SHOE LENGTH: 13-3/4"  
 PRODUCT WEIGHT: 92 LBS

**PROPRIETARY AND CONFIDENTIAL**

THE INFORMATION CONTAINED IN THIS DRAWING IS THE SOLE PROPERTY OF VALLEY CRAFT. ANY REPRODUCTION IN PART OR AS A WHOLE WITHOUT THE WRITTEN PERMISSION OF VALLEY CRAFT IS PROHIBITED.

**UNLESS OTHERWISE SPECIFIED:**

DECIMALS  
 2 PLACES  $\pm 0.01$   
 3 PLACES  $\pm 0.005$   
 ANGLE  $\pm 1^\circ$

**GRIND/SAND SHARP EDGES .015 MAX  
 DOES NOT APPLY TO DRILLED HOLE DIA.**

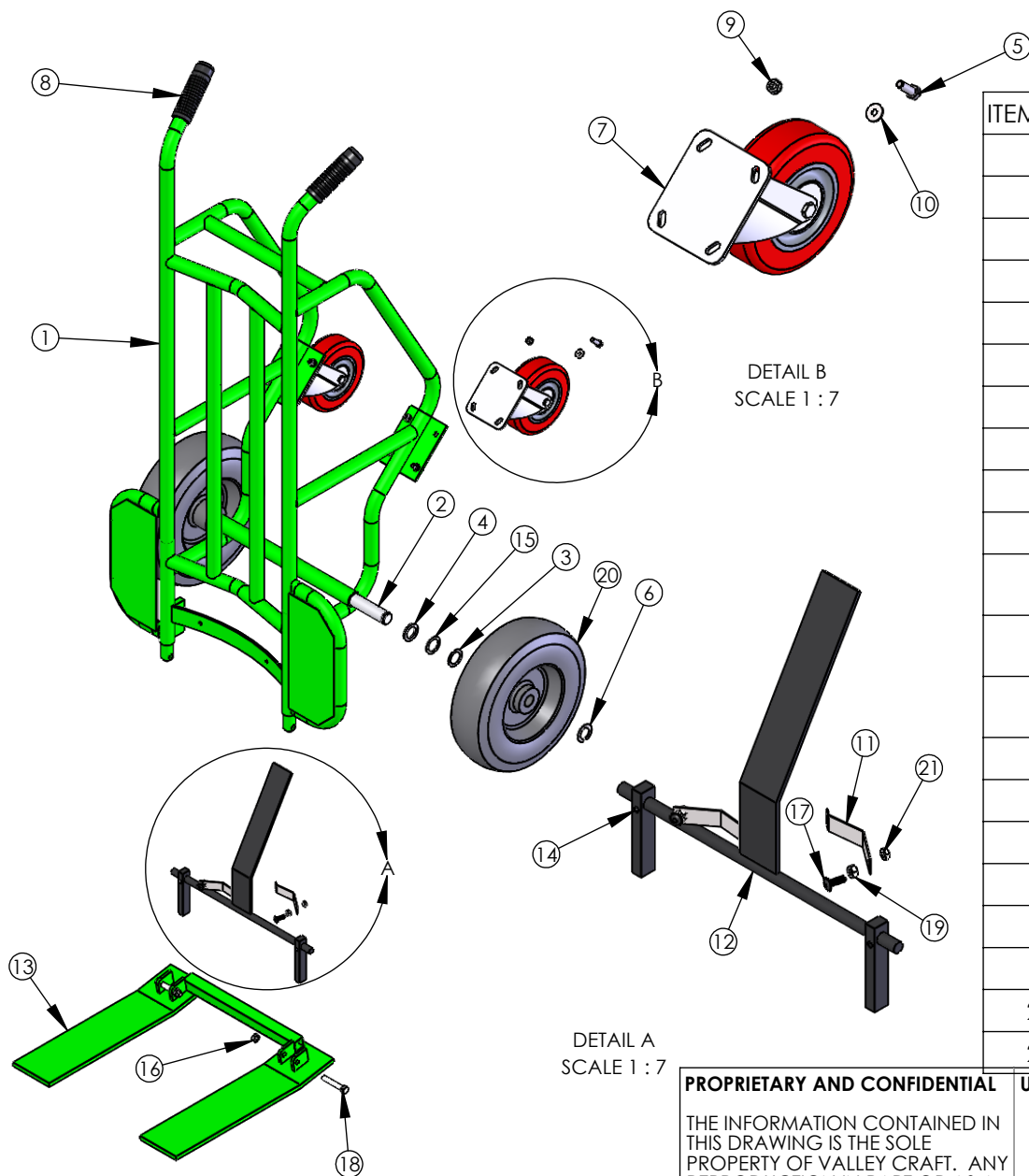


**TITLE:** TRK-PAL/4-WHL-14-1/2

SIZE	<b>PART NO.</b>
<b>A</b>	F84812A7
	<b>MATL:</b> Material <not specified>
SCALE: 1:24	WEIGHT: 93.71
	SHEET 1 OF 3

B	E22-056	ADDED SHEET METAL GUARD	DN	11/09/2022
CHG.	E.C.O.	DESCRIPTION / WAS	BY	DATE

**ALL ANGLES ARE 90°  
 UNLESS SPECIFIED**



ITEM NO.	PART NUMBER	DESCRIPTION	QTY.
1	F69461A7	F W/806SA	1
2	F30001A1	AXLE-800SS	1
3	Z10011A5	BUSH-MACH 1x18GAx1-1/2 OD	2
4	Z10013A3	BUSH-MACH 1x10GAx1-1/2 OD	2
5	Z10123A0	S-HHC 5/16-18X1	8
6	Z10223A9	RING-RTNG 1	2
7	Z30121A0	CSTR-6X2 SWL RTP	2
8	Z50007A7	GRIP-HDL 1-1/8" BLK	2
9	Z10036A6	NUT-HEX KEPS 5/16-18	8
10	Z10200A6	WASHER-1/4 FLAT USS	8
11	F30212A6/R70212	SPG-TRIP PDL -- CS, use R70212 for RPMTS	2
12	F60008A1/R70006	TRIP PDL WLDMT -- CS, use R70006 for RPMTS	1
13	F60415A8/R70415	SHOE WLDMT-14.5/S -- CS, use R70415 for RPMTS	1
14	Z10007A9	PIN-SPG 1/4X3/4	1
15	Z10012A4	BUSH-MACH 1x14GAx1-1/2 OD	2
16	Z10047A3	NUT-NYL NE 3/8-16	2
17	Z10438A0	S-BHCS 1/4-20X3/4 BLK	2
18	Z10136A5	S-HHC 3/8-16X2-1/4	2
19	Z10035A7	NUT-HEX KEPS 1/4-20	2
20	Z30681A7	WHL-12 AIR	2
21	Z10043A7	NUT-NYL NE 1/4-20	2

DETAIL A  
SCALE 1 : 7

DETAIL B  
SCALE 1 : 7

**PROPRIETARY AND CONFIDENTIAL**

THE INFORMATION CONTAINED IN THIS DRAWING IS THE SOLE PROPERTY OF VALLEY CRAFT. ANY REPRODUCTION IN PART OR AS A WHOLE WITHOUT THE WRITTEN PERMISSION OF VALLEY CRAFT IS PROHIBITED.

**UNLESS OTHERWISE SPECIFIED:**

DECIMALS  
2 PLACES  $\pm 0.01$   
3 PLACES  $\pm 0.005$   
ANGLE  $\pm 1^\circ$

GRIND/SAND SHARP EDGES .015 MAX  
DOES NOT APPLY TO DRILLED HOLE DIA.



**TITLE:** TRK-PAL/4-WHL-14-1/2

**PART NO.** F84812A7

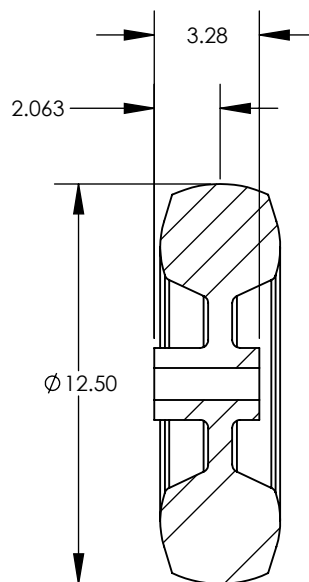
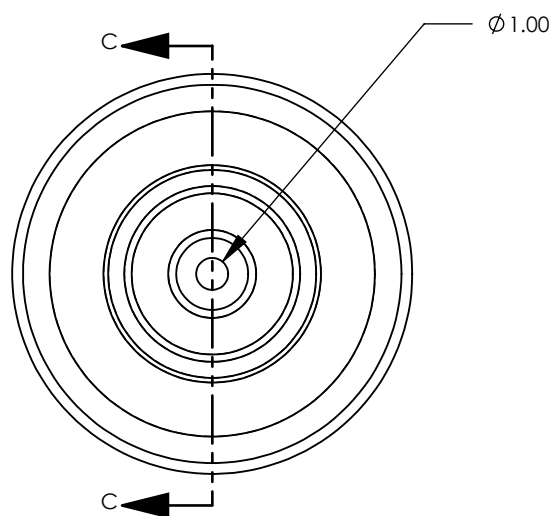
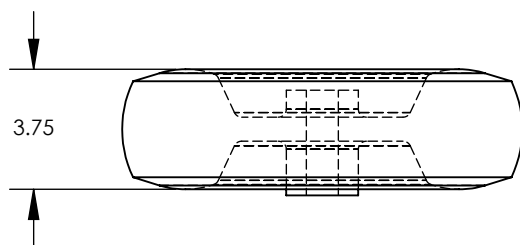
**MATL:** Material <not specified>

SCALE: 1:24 WEIGHT: 93.71 SHEET 2 OF 3

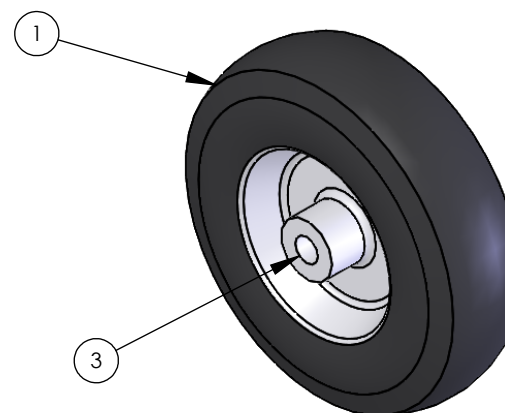
B	E22-056	ADDED SHEET METAL GUARD	DN	11/09/2022
CHG.	E.C.O.	DESCRIPTION / WAS	BY	DATE

**ALL ANGLES ARE 90°  
UNLESS SPECIFIED**

	NAME	DATE
DRAWN	SG	07/26/2021
CHECKED		
ENG APPR.		



SECTION C-C



1. TIRE SIZE: 12 - 1/2 X 3 - 3/4 (4.1/3.5 - 6)
2. TREAD PATTERN: SAWTOOTH
3. WHEEL MATERIAL: RUBBER
4. LOAD CAP./WHEEL: LOAD RANGE "B"
5. WEIGHT/WHEEL: 7#
6. OVERALL HUB WIDTH: 3.28
7. OFFSET CENTER OF WHEEL TO END OF HUB: 2 - 1/16
8. HUB MATERIAL: STEEL
9. BEARING TYPE: BALL
10. BORE OR AXLE SIZE: 1
11. HUB COLOR: SILVER
12. GREASE ZERK: NO
13. VENDOR: HOOSIER #869H34-82

Item Number	Part Number	Description	Qty.
1	Z30007A9	TIRE-AIR 12	1
2	Z30008A8	TUBE-AIR 12	1
3	Z30002A4	BEARING-FLG 1/RPMT	2

B		DRAWN FROM CADKEY	PBS	1/08
CHG.	E.C.O.	DESCRIPTION / WAS	BY	DATE

**PROPRIETARY AND CONFIDENTIAL**

THE INFORMATION CONTAINED IN THIS DRAWING IS THE SOLE PROPERTY OF VALLEY CRAFT. ANY REPRODUCTION IN PART OR AS A WHOLE WITHOUT THE WRITTEN PERMISSION OF VALLEY CRAFT IS PROHIBITED.

**ALL ANGLES ARE 90°  
UNLESS SPECIFIED**

**UNLESS OTHERWISE SPECIFIED:**

DECIMALS  
2 PLACES ±0.01  
3 PLACES ±0.005  
ANGLE ±1°

**GRIND/SAND SHARP EDGES .015 MAX  
DOES NOT APPLY TO DRILLED HOLE DIA.**

	NAME	DATE
DRAWN	salvopb	1/08
CHECKED		
ENG APPR.		



2001 South Hwy. 61, Lake City, MN 55041-9555, U.S.A.

<b>TITLE:</b> WHL-12 AIR	
<b>SIZE</b>	<b>PART NO.</b> Z30681A7
<b>A</b>	<b>MATL:</b>
<b>SCALE:</b> 1:6	<b>WEIGHT:</b> 12.53
<b>SHEET 3 OF 3</b>	