

4 WHEEL DEEP FRAME PALLET TRUCK  
 MATERIAL: ALUMINUM  
 WHEEL: SOLID RUBBER  
 CAPACITY: 1,000 LBS  
 HEIGHT: 54"  
 WIDTH: 26"  
 DEPTH: 33"  
 SHOE LENGTH: 13-3/4"  
 PRODUCT WEIGHT: 81 LBS

**PROPRIETARY AND CONFIDENTIAL**

THE INFORMATION CONTAINED IN THIS DRAWING IS THE SOLE PROPERTY OF VALLEY CRAFT. ANY REPRODUCTION IN PART OR AS A WHOLE WITHOUT THE WRITTEN PERMISSION OF VALLEY CRAFT IS PROHIBITED.

**UNLESS OTHERWISE SPECIFIED:**

DECIMALS  
 2 PLACES  $\pm 0.01$   
 3 PLACES  $\pm 0.005$   
 ANGLE  $\pm 1^\circ$

GRIND/SAND SHARP EDGES .015 MAX  
 DOES NOT APPLY TO DRILLED HOLE DIA.



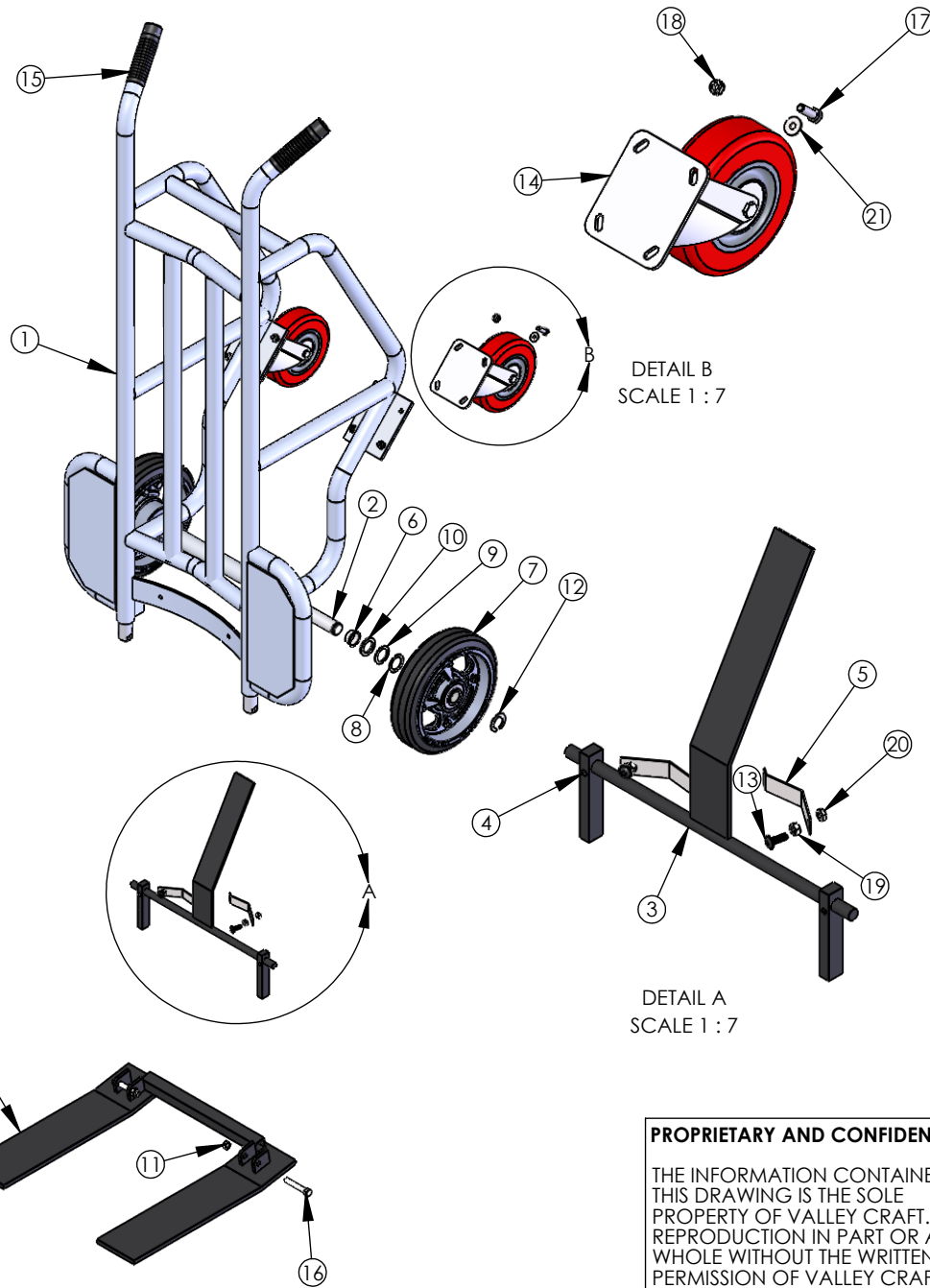
**TITLE:** TRK-PAL/806AS

**SIZE:** A  
**PART NO.** F84802A9  
**MATL:** Material <not specified>

**SCALE:** 1:24 **WEIGHT:** 66.23 **SHEET 1 OF 3**

B	E22-056	ADDED SHEET METAL GUARD	DN	11/09/2022
CHG.	E.C.O.	DESCRIPTION / WAS	BY	DATE

**ALL ANGLES ARE 90°  
 UNLESS SPECIFIED**



ITEM NO.	PART NUMBER	DESCRIPTION	QTY.
1	F60510A2	F W/806AS	1
2	F30001A1	AXLE-800SS	1
3	F60008A1/R70006	TRIP PDL WLDMT -- CS, use R70006 for RPMTS	1
4	Z10007A9	PIN-SPG 1/4X3/4	1
5	F30212A6/R70212	SPG-TRIP PDL -- CS, use R70212 for RPMTS	2
6	F57260A9	BRG-STL FLG 1.01X1.05X.5	2
7	F60004A5	WHL-10 D/M	2
8	Z10011A5	BUSH-MACH 1x18GAx1-1/2 OD	2
9	Z10012A4	BUSH-MACH 1x14GAx1-1/2 OD	2
10	Z10013A3	BUSH-MACH 1x10GAx1-1/2 OD	2
11	Z10047A3	NUT-NYL NE 3/8-16	2
12	Z10223A9	RING-RTNG 1	2
13	Z10438A0	S-BHCS 1/4-20X3/4 BLK	2
14	Z30121A0	CSTR-6X2 SWL RTP	2
15	Z50085A2	GRIP-HDL 1-1/4" BLK	2
16	Z10136A5	S-HHC 3/8-16X2-1/4	2
17	Z10123A0	S-HHC 5/16-18X1	8
18	Z10036A6	NUT-HEX KEPS 5/16-18	8
19	Z10035A7	NUT-HEX KEPS 1/4-20	2
20	Z10043A7	NUT-NYL NE 1/4-20	2
21	Z10200A6	WASHER-1/4 FLAT USS	8
22	F60415A8/R70415	SHOE WLDMT-14.5/S -- CS, use R70415 for RPMTS	1

**PROPRIETARY AND CONFIDENTIAL**

THE INFORMATION CONTAINED IN THIS DRAWING IS THE SOLE PROPERTY OF VALLEY CRAFT. ANY REPRODUCTION IN PART OR AS A WHOLE WITHOUT THE WRITTEN PERMISSION OF VALLEY CRAFT IS PROHIBITED.

**ALL ANGLES ARE 90°  
UNLESS SPECIFIED**

**UNLESS OTHERWISE SPECIFIED:**

DECIMALS  
2 PLACES  $\pm 0.01$   
3 PLACES  $\pm 0.005$   
ANGLE  $\pm 1^\circ$

**GRIND/SAND SHARP EDGES .015 MAX  
DOES NOT APPLY TO DRILLED HOLE DIA.**

	NAME	DATE
DRAWN	SG	07/27/2021
CHECKED		
ENG APPR.		

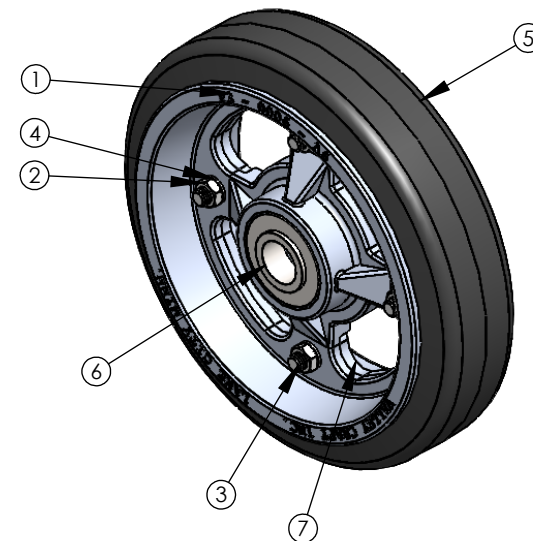
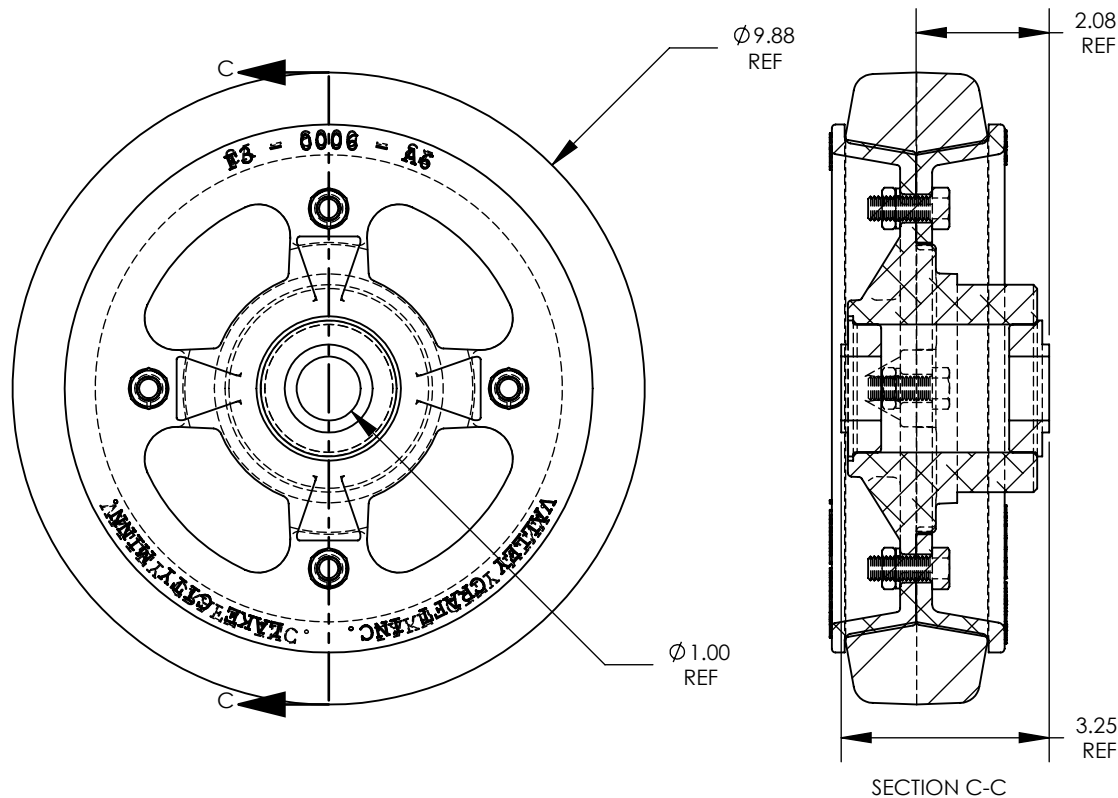


2001 South Hwy. 61, Lake City, MN 55041-9555, U.S.A.

**TITLE:** TRK-PAL/806AS

SIZE A	<b>PART NO.</b> F84802A9
	<b>MATL:</b> Material <not specified>
SCALE: 1:24	WEIGHT: 66.23
	SHEET 2 OF 3

B	E22-056	ADDED SHEET METAL GUARD	DN	11/09/2022
CHG.	E.C.O.	DESCRIPTION / WAS	BY	DATE



# NOTES:

- A** : 10 X 2-1/2 TIRE SIZE
- B** : SMOOTH TREAD PATTERN
- C** : SOFT RUBBER WHEEL MATERIAL
- D** : 600# LOAD CAPACITY
- E** : 8.5# WEIGHT/WHEEL
- F** : ALUMINUM HUB MATERIAL
- G** : BALL BEARING TYPE
- H** : SILVER HUB COLOR

## PROPRIETARY AND CONFIDENTIAL

THE INFORMATION CONTAINED IN THIS DRAWING IS THE SOLE PROPERTY OF VALLEY CRAFT. ANY REPRODUCTION IN PART OR AS A WHOLE WITHOUT THE WRITTEN PERMISSION OF VALLEY CRAFT IS PROHIBITED.

## UNLESS OTHERWISE SPECIFIED:

DECIMALS  
2 PLACES  $\pm 0.01$   
3 PLACES  $\pm 0.005$   
ANGLE  $\pm 1^\circ$

GRIND/SAND SHARP EDGES .015 MAX  
DOES NOT APPLY TO DRILLED HOLE DIA.

	NAME	DATE
DRAWN	JS	
CHECKED		
ENG APPR.		



TITLE: WHL-10 D/M

PART NO. F60004A5

MATL:

SCALE: 1:3 WEIGHT: SHEET 3 OF 3

A	-	DRAWN	JS	01/29/2009
CHG.	E.C.O.	DESCRIPTION / WAS	BY	DATE

ALL ANGLES ARE 90°  
UNLESS SPECIFIED