



1-1/4" EXTENSION TUBES WITH THREADED JOINT TECHNICAL SPECIFICATION

Job Name _____	Item # _____
Location _____	
Engineer _____	Contractor _____
PO # _____	Tag _____
Representative _____	

SPECIFICATIONS

Dearborn Tubular Extension Tubes with Threaded Joint are manufactured with 17 or 20 gauge brass in various sizes for use in tubular drain applications.

DESCRIPTION

- Chrome Finish

APPROVALS AND LISTINGS



PRODUCT SELECTOR

1-1/4" EXTENSION TUBES WITH THREADED JOINT

✓	Product Number	Size	Description	Carton Quantity
	819-1	1-1/4" x 6"	Extension Tube, Threaded Both Ends - 20 Ga.	10
	820A-1	1-1/4" x 8"	Extension Tube, Threaded Both Ends - 20 Ga.	10
	822-1	1-1/4" x 12"	Extension Tube, Threaded Both Ends - 20 Ga.	10
	822-3	1-1/4" x 12"	Extension Tube, Threaded Both Ends - 20 Ga., Unfinished 1	10
	820C-1	1-1/4" x 8"	Extension Tube, Threaded Both Ends - 17 Ga.	10
	822A-1	1-1/4" x 12"	Extension Tube, Threaded Both Ends - 17 Ga.	10

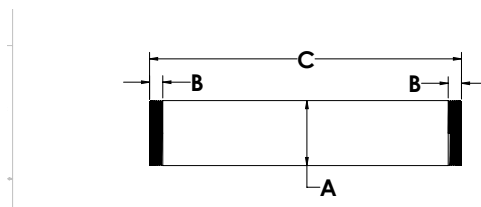
Data is subject to manufacturing tolerances.

DIMENSIONS

[A]:	Diameter A	1.25"	[C]:	Length C	See Chart A.1
[B]:	Threaded Length	0.26"			

A.1 - LENGTHS

	Size 6"	Size 8"	Size 12"
Length C:	6"	8"	12"



Access BIM/Revit content through www.oatey.com