

The Apollo is a perennial favorite, combining value, comfort, adjustability and quality, and featuring a breathable, color-coordinated mesh back that matches the comfortably contoured and padded waterfall seat.

specifications

Overall Dimensions

25" x 24" x 43.5-56"
(W x D x H)

Seat

20.5" x 19.3" (W x D)

Back

19.5" x 20" (W x H)

Seat Height

26.5" (at lowest point)
36.5" (at highest point)

Weight

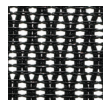
58 lbs

Cube

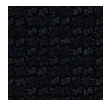
5.7

standard colors

black mesh
PM01



black fabric
5806



drafting
chair

DFT9800

option

**polished
steel base**
S330C



features

Seat Height Adjustment

Sets seat height to desired position relative to floor.

Waterfall Seat

Front of cushion slopes to reduce pressure on the back of the knees.

Width Adjustable Arms

Adjusts arms in or out for proper ergonomic positioning.

Arm Height Adjustment

Adjusts arm up or down for proper ergonomic positioning while seated.

2.8" Ratchet Back height Adjustment

Backrest easily adjusts up or down relative to seat for personalized lumbar region support and comfort.

Includes Both Castors and Glides



fabrix | custom
upholstery

eurotech
a raynor group company

1.800.637.0005

email: customerservice@raynorgroup.com
catalog requests: literature@raynorgroup.com