



Item #: _____ Qty #: _____
Model #: _____
Project #: _____

FEATURES:

FLAT TOP is furnished with a 1 5/8" sanitary rolled rim on the front and 1 5/8" square bend edges on the 2 sides and rear.

Rear flush panel along the rear of the base unit.

MATERIAL:

TOP is 14 gauge stainless steel type "304" series with galvanized hat channel.

BODY is 18 gauge stainless steel type "430" series.

48"-72" Units: Stainless steel legs, gussets, legs & adjustable bullet feet.

84"-144" Units: Bolt-on stainless steel legs with 1 1/2" adjustable hex foot.

CONSTRUCTION:

All TIG welded. Exposed areas finished to match adjacent surfaces.

Entire Top is mechanically polished to a satin finish and is sound deadened.

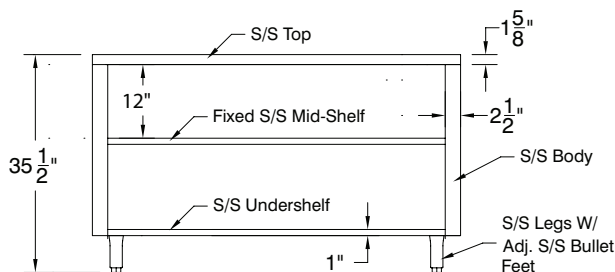
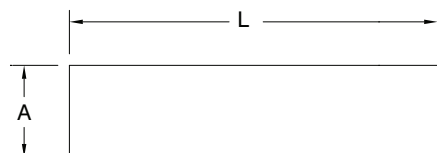
Roll formed embossed galvanized hat channels are secured to top by means of structural adhesive and weld studs.

UNIT-BODY DESIGN sides, back and shelf are welded to form a single rigid structure.

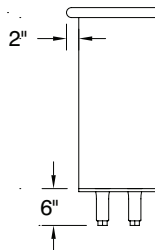
DETAILS and SPECIFICATIONS

TOL ± .500"

ALL DIMENSIONS ARE TYPICAL



Units 7' and larger are furnished with 6 legs.



Model #	L	A	Wt.
DC-154†	48"	15"	155 lbs.
DC-155†	60"	15"	195 lbs.
DC-156†	72"	15"	225 lbs.
DC-157*	84"	15"	265 lbs.
DC-158*	96"	15"	295 lbs.
DC-1510*	120"	15"	360 lbs.
DC-1512*	144"	15"	400 lbs.
DC-184†	48"	18"	170 lbs.
DC-185†	60"	18"	205 lbs.
DC-186†	72"	18"	245 lbs.
DC-187*	84"	18"	275 lbs.
DC-188*	96"	18"	315 lbs.
DC-1810*	120"	18"	385 lbs.
DC-1812*	144"	18"	452 lbs.

Units 7' and larger are furnished with 6 legs.



† 72" or shorter include stainless steel gussets, legs & bullet feet



* 84" or longer include stainless steel bolt-on style legs