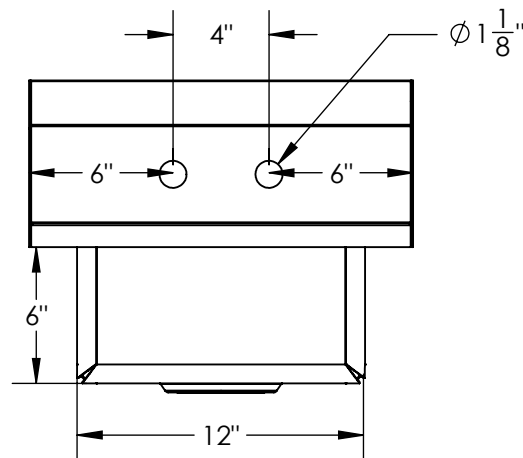
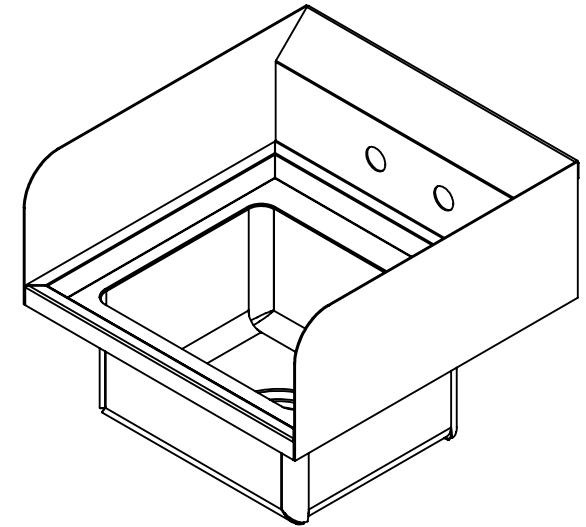


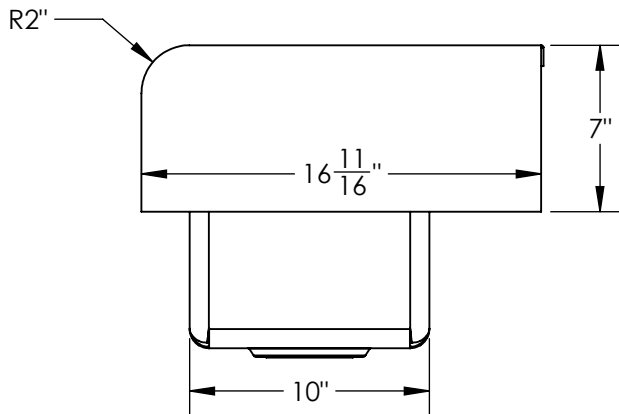
TOP VIEW



FRONT VIEW



ISO VIEW



SIDE VIEW

WALL MT. HAND SINK SPECIFICATIONS:

- 16 GA 304 SS TOP
- 16 GA 304 SS SINK BOWL
- 14 GA 304 SS SPLASH
- SINK BOWL- 12" X 10" X 6"
- INCLUDES (1) FAUCET
- INCLUDES (1) STRAINERS
- INCLUDES (1) Z-CLIPS



REFERENCE JOB #: *
LOCATION: FORT SMITH, AR
STORE #: *

DD654324

DRAWN BY: agautam

DATE: 01/10/2018

SCALE: 1:8

PAGE: 1 OF 5

REV	DESCRIPTION	DATE	DRAFTER
*	*	*	*



7400 SOUTH 28th STREET
FORT SMITH, AR 72908
PH. 800-643-2980
FAX. 479-646-5517

16" x 16 3/4" x 6"
WALL MT. HAND SINK