

CHAMPION GRILLS

PRECISION TEMPERATURE CONTROL & EVEN HEAT DISTRIBUTION



PROUDLY MADE IN THE USA 

Champion Grills offer the best TEXAS-style wood-burning grilling available on the market today. Our indoor wood-burning Champion Grills control temperatures and evenly distribute heat resulting in lower fuel costs and consistent, optimally-prepared foods. The grills are constructed of double-walled stainless steel with firebrick that radiates heat back into the grill area, which allows you to cook at temperatures up to 1800°F while keeping the heat in the grills and not in the kitchen. This multilayered insulation allows heat to penetrate the food, cooking it quickly and with greater control. Your kitchen will notice reduced fuel costs and your guests will enjoy a moist, flavorful entrée. The unique construction of our grills' thick cast iron grates sears food quickly and directs the flow of excess juices. You can easily remove doors, ash boxes, and grate sections for easy access when cleaning. The durable stainless steel exterior makes the grills damage resistant. Never before has cooking and upkeep been so simple than with our efficient wood-burning grills.

- 14GA stainless-steel exterior body and 7GA stainless-steel interior construction
- Drop-down front-loading fuel door
- Stainless-steel ash drawers with handles
- Superior firebrick heat retention
- 1800°F insulation
- TEXAS-style grilling indoors
- 5" heavy-duty swivel / locking caster
- 22lb. 1.5" cast iron fire grates and 18lb. 1" cast iron grill grates
- Add-ons available: Charcoal boxes, stainless-steel front plate shelf, and saucepan shelf
- 3 Year warranty on grill construction



(254) 728-3101 // www.championtuffgrills.com

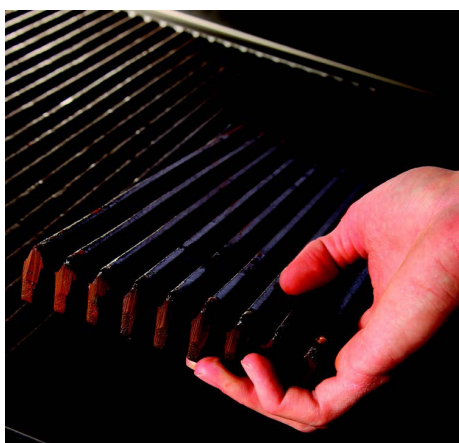
Champion Tuff Grill by Smokey Mountain Grill LLC // PO Box 150631, Fort Worth, Texas 76108



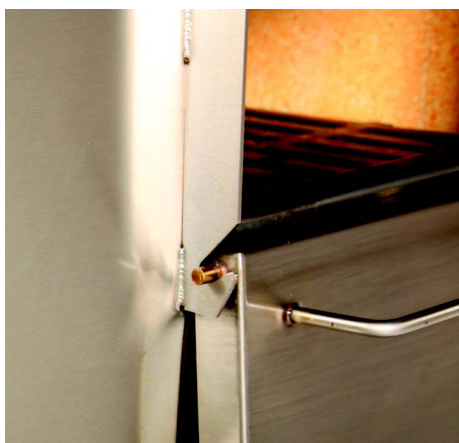


CHAMPION GRILL SPEC SHEET

CHAMPION GRILL SPECS	CG 28	CG 34	CG 40	CG 46	CG 52	CG 64
Dimensions (W x D x H in.)	28x30x40	34x30x40	40x30x40	46x30x40	52x30x40	64x30x40
Cook Surface (height in.)	36	36	36	36	36	36
Cooking Surface (square in.)	576	720	864	1008	1152	1440
Top Grates (6"x 24")	4	5	6	7	8	10
Bottom Grates (6" x19")	3	4	5	6	7	9
Weight (lbs.)	615	683	778	913	1048	1193
Ash Drawers	2	2	2	2	3	4
Fire Bricks	10	11	12	13	14	16
Hood CFM	1700	1700	1925	2150	2340	2765
Outer Body Construction	14 gauge stainless steel					
Inner Wall Construction	7 gauge stainless steel					
Inner Insulation	Fiber Frax ceramic fiber rated at 2,400 °F					



Heavy-duty top grates



Doors easily lift off and hang for loading



Fire brick and heavy-duty bottom grates



Looking for a supplier of high-quality wood to grill, smoke or charbroil with? Champion Grills and Gourmet Wood Products go hand-in-hand. Check out Gourmet Wood Products selection of food-quality wood to take your menu to the next level at www.gourmetwood.com.

(254) 728-3101 // www.championtuffgrills.com

Champion Tuff Grill by Smokey Mountain Grill LLC // PO Box 150631, Fort Worth, Texas 76108

