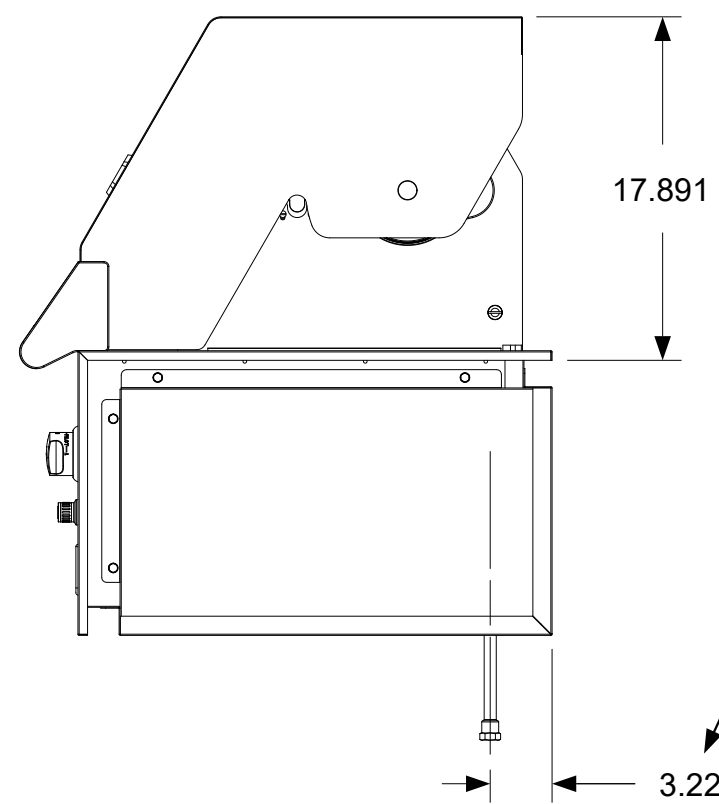
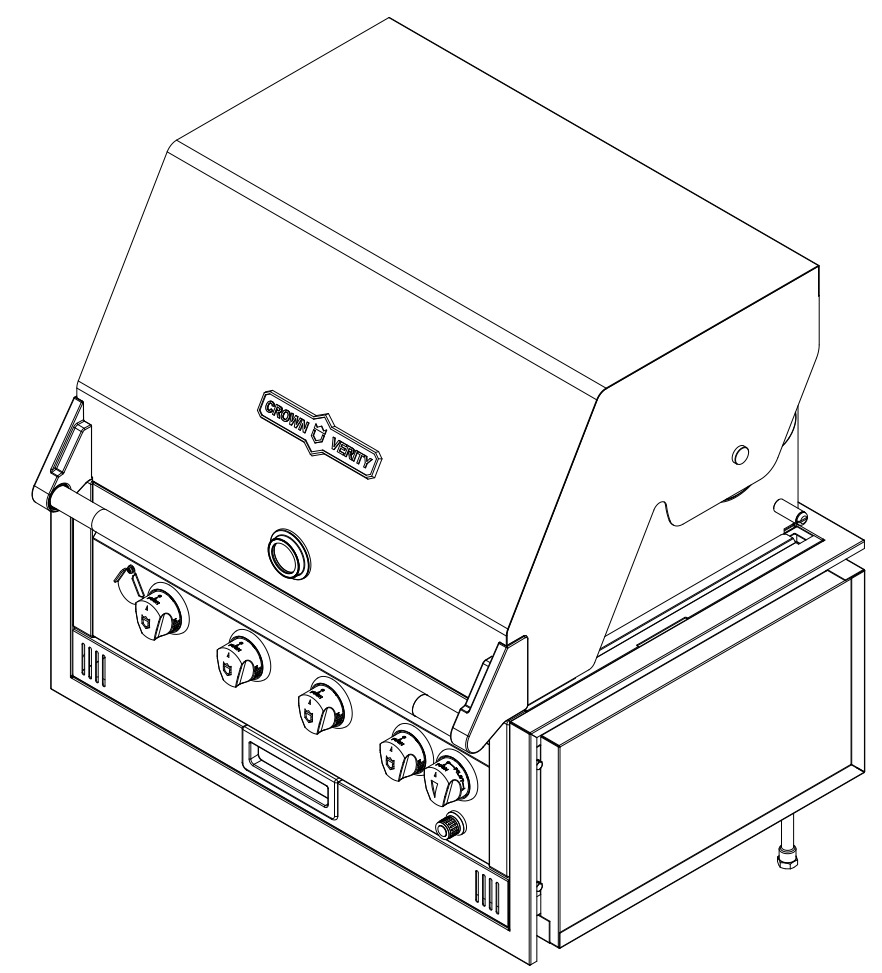


| REVISION HISTORY |                     |            |            |
|------------------|---------------------|------------|------------|
| REV              | DESCRIPTION         | DATE       | APPROVED   |
| -                | Engineering Release | 09/09/2021 | Todd Stone |

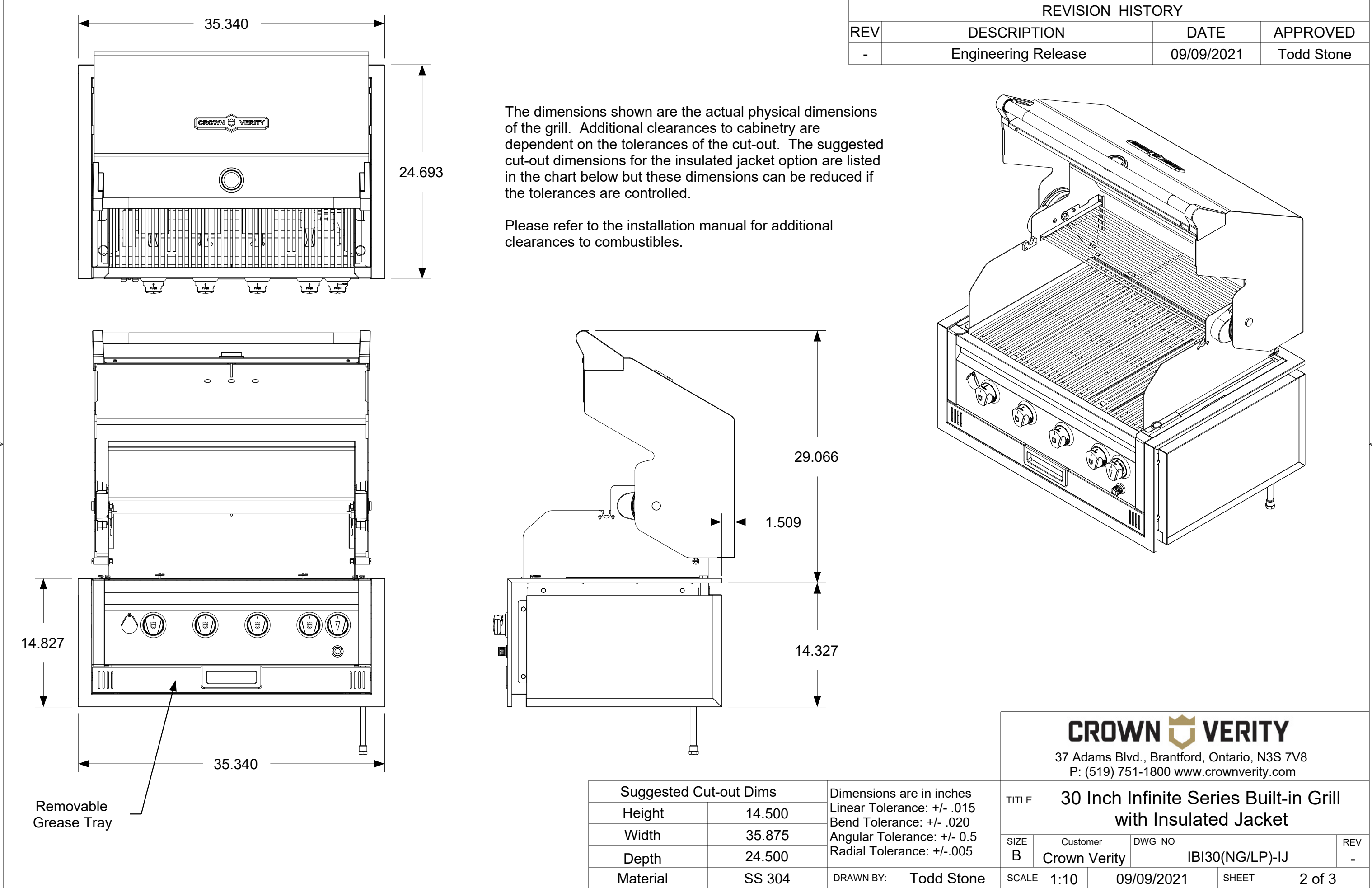


The dimensions shown are the actual physical dimensions of the grill. Additional clearances to cabinetry are dependent on the tolerances of the cut-out. The suggested cut-out dimensions are listed in the chart below but these dimensions can be reduced if the tolerances are controlled.

Please refer to the installation manual for additional clearances to combustibles.

| Suggested Cut-out Dims |        | Dimensions are in inches<br>Linear Tolerance: +/- .015<br>Bend Tolerance: +/- .020<br>Angular Tolerance: +/- 0.5<br>Radial Tolerance: +/- .005 |
|------------------------|--------|--|
| Height                 | 14.500 |  |
| Width                  | 35.875 |  |
| Depth                  | 24.500 |  |
| Material               | SS 304 | DRAWN BY: Todd Stone   |

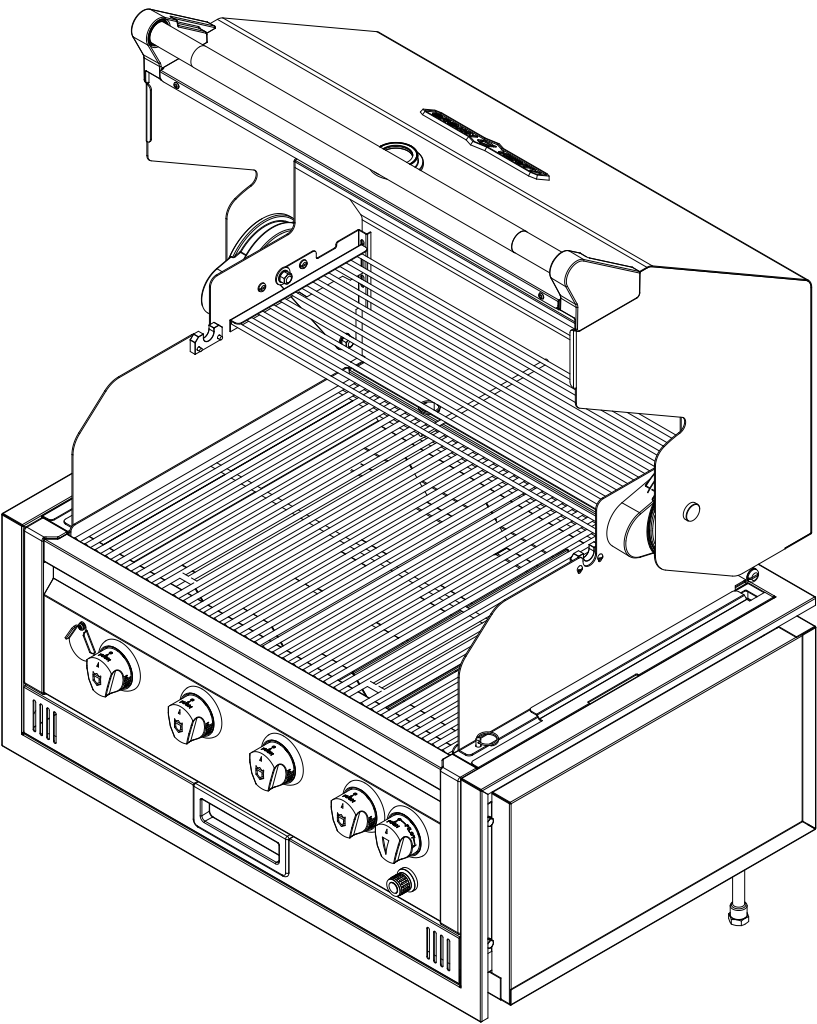
| <div>CROWN VERITY</div> <div>37 Adams Blvd., Brantford, Ontario, N3S 7V8<br/>P: (519) 751-1800 <a href="http://www.crownverity.com">www.crownverity.com</a></div> |                       |                        |        |
|---|-----------------------|------------------------|--------|
| TITLE 30 Inch Infinite Series Built-in Grill with Insulated Jacket  |                       |                        |        |
| SIZE B  | Customer Crown Verity | DWG NO IB130(NG/LP)-IJ | REV -  |
| SCALE 1:10  | 09/09/2021            | SHEET                  | 1 of 3 |



| REVISION HISTORY |                     |            |            |
|------------------|---------------------|------------|------------|
| REV              | DESCRIPTION         | DATE       | APPROVED   |
| -                | Engineering Release | 09/09/2021 | Todd Stone |

The dimensions shown are the actual physical dimensions of the grill. Additional clearances to cabinetry are dependent on the tolerances of the cut-out. The suggested cut-out dimensions for the insulated jacket option are listed in the chart below but these dimensions can be reduced if the tolerances are controlled.

Please refer to the installation manual for additional clearances to combustibles.

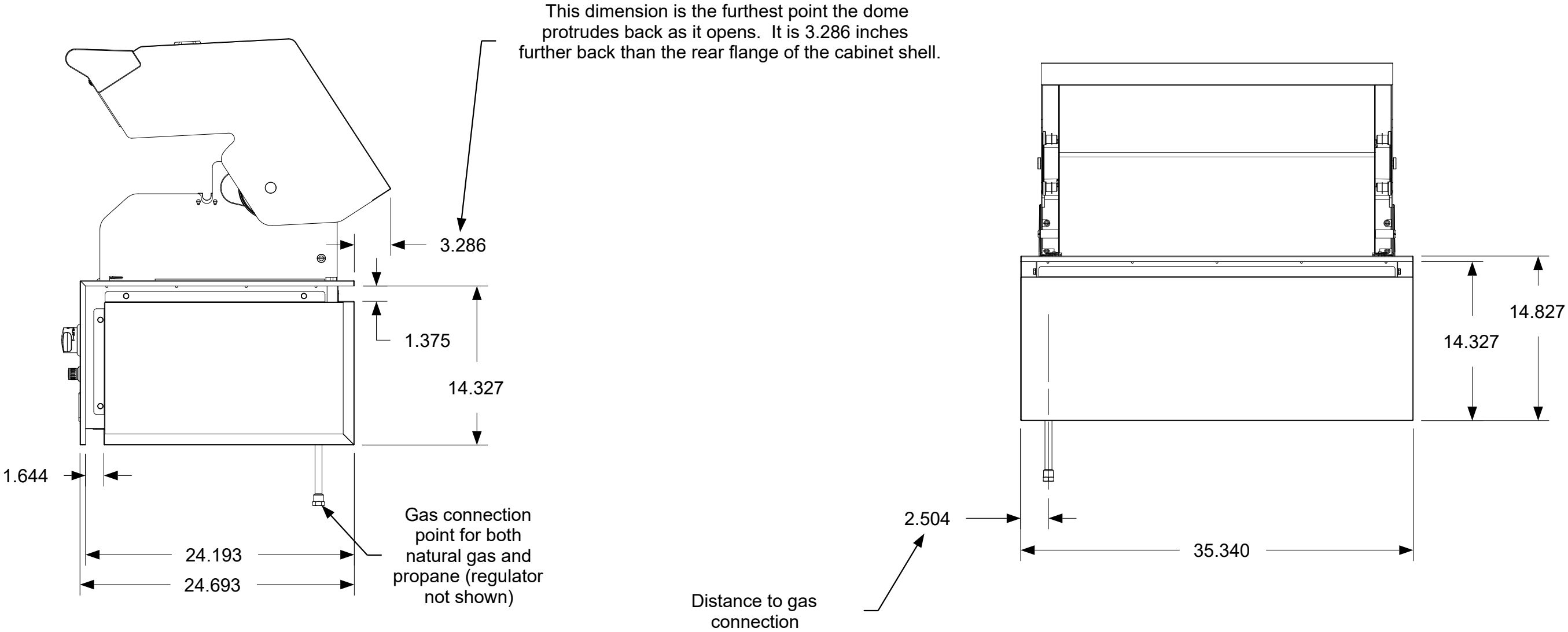


| Suggested Cut-out Dims |        | Dimensions are in inches<br>Linear Tolerance: +/- .015<br>Bend Tolerance: +/- .020<br>Angular Tolerance: +/- 0.5<br>Radial Tolerance: +/- .005 |
|------------------------|--------|--|
| Height                 | 14.500 |  |
| Width                  | 35.875 |  |
| Depth                  | 24.500 |  |
| Material               | SS 304 | DRAWN BY: Todd Stone   |

**CROWN VERITY**  
37 Adams Blvd., Brantford, Ontario, N3S 7V8  
P: (519) 751-1800 [www.crownverity.com](http://www.crownverity.com)

|  |                       |                        |        |
|--|-----------------------|------------------------|--------|
| TITLE 30 Inch Infinite Series Built-in Grill with Insulated Jacket |                       |                        |        |
| SIZE B   | Customer Crown Verity | DWG NO IB130(NG/LP)-IJ | REV -  |
| SCALE 1:10   | 09/09/2021            | SHEET                  | 2 of 3 |

| REVISION HISTORY |                     |            |            |
|------------------|---------------------|------------|------------|
| REV              | DESCRIPTION         | DATE       | APPROVED   |
| -                | Engineering Release | 09/09/2021 | Todd Stone |



The dimensions shown are the actual physical dimensions of the grill. Additional clearances to cabinetry are dependent on the tolerances of the cut-out. The suggested cut-out dimensions are listed in the chart below but these dimensions can be reduced if the tolerances are controlled.

Please refer to the installation manual for additional clearances to combustibles.

| Suggested Cut-out Dims |        | Dimensions are in inches<br>Linear Tolerance: +/- .015<br>Bend Tolerance: +/- .020<br>Angular Tolerance: +/- 0.5<br>Radial Tolerance: +/- .005 |
|------------------------|--------|--|
| Height                 | 14.500 |  |
| Width                  | 35.875 |  |
| Depth                  | 24.500 |  |
| Material               | SS 304 | DRAWN BY: Todd Stone   |

**CROWN VERITY**  
37 Adams Blvd., Brantford, Ontario, N3S 7V8  
P: (519) 751-1800 [www.crownverity.com](http://www.crownverity.com)

|  |                       |                        |       |
|--|-----------------------|------------------------|-------|
| TITLE 30 Inch Infinite Series Built-in Grill with Insulated Jacket |                       |                        |       |
| SIZE B   | Customer Crown Verity | DWG NO IBI30(NG/LP)-IJ | REV - |
| SCALE 1:10   | 09/09/2021            | SHEET 3 of 3           |       |