

INSULATED PASS-THRU STAINLESS STEEL HOT CABINET MODEL H-138-NPS-CC3MQ

FEATURES AND BENEFITS:

- Fully insulated hot cabinet keeps prepared foods at serving temperatures. Ideal for pizza.
- Pass-thru design allows for access from preparation and serving areas.
- Powerful, yet efficient, 2000 Watt heating system maintains the right temperature to properly hold products. Heats up to 200°F (93°C).
- Control panel has easy-to-read thermometer.
- Internal frame in body maintains structural rigidity.
- Stainless steel construction throughout for ease of cleaning. One piece extended base protects cabinet body.
- Smooth interior coved corners prevent food particles/grease buildup.
- Insulated Dutch doors on front have pull handle and self-closing hinges. Top door has tempered glass window.
- Full rear door has high temperature magnetic latch for "easy open"; twist-lock catch secures door during transport. Door has full length tempered glass window. Safety-conscious anti-microbial latch protects against spreading germs.
- Standard with right hand hinging; left hand hinging available upon request. Field reversible for flexibility.
- Recessed push/pull handles on both sides prevents damage to walls; allows easy maneuvering.
- Twelve sets of chrome plated wire universal angles hold (24) 14-1/8" pizza boxes on 4-1/2" centers; adjustable on 1-1/2" centers. Twelve wire shelves provided.
- Heavy duty 5" swivel casters, two with brakes. Provides mobility when fully loaded.



H-138-NPS-CC3MQ

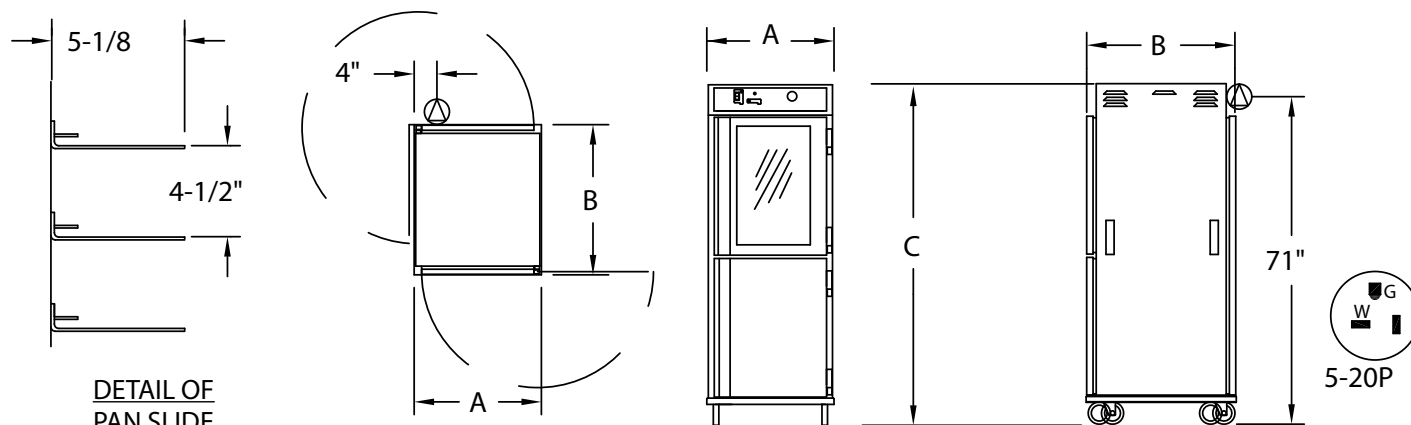
ACCESSORIES and OPTIONS (Available at extra cost):

- ☐ Extra Wire Shelves
- ☐ Lock Hasp
- ☐ Extra Wire Angles
- ☐ Corner Bumpers
- ☐ Perimeter Bumper
- ☐ Floor Lock (for use with 5" casters)
- ☐ Various Caster Options
- ☐ 208 or 240 Volt Service

See page B-30 for accessory details.



H138NPSCC3MQ



| CRES COR MODEL NO. | PAN | | | DIM "A" | DIM "B" | DIM "C" | INSIDE DIMENSIONS | | | | WEIGHT ACT. |
|-----------------------|-----|----------------------|----|---------|---------|---------|-------------------|--------|--------|-----|----------------|
| | CAP | SIZE | | WIDTH | DEPTH | HEIGHT | WIDTH | DEPTH | HEIGHT | | |
| H138NPSCC3MQ | 24 | 14-1/8" Pizza Box | IN | 25 | 33 | 73-1/2 | 19-7/8 | 28-1/4 | 58 | LBS | 302 |
| | | | MM | 635 | 838 | 1867 | 505 | 718 | 1475 | KG | 137 |

When ordering bumpers, add 2" to overall dimensions.



Gold indicates our Best Insulated Hot Cabinets with the best warranty in the industry.
3-Year Parts / 1-Year Labor.

CABINET:

- Body: Heavy duty stainless steel, 22 ga.
- Reinforcement: Heavy-duty internal framework of 18ga. stainless steel
- Insulation: Fiberglass, R-value = 6.82 at 75°F, 1-1/2" in door, 2" in sidewalls.
- Interior coved corners.
- Air tunnels: Stainless steel, 22 ga.; lift out type, mounted on sides.
- Pull handles (4): 5" vertical; recessed.
- Cord keeper on body side.

BASE:

- One-piece construction, .125 aluminum.
- Casters: 5" Dia. swivel, modulus donut tires, 1 1/4 wide, load cap. 250 lbs. each, temp. range - 45° to + 180°F. Delrin bearings. Front casters equipped with brakes.

DOORS: DUTCH ON FRONT, SINGLE ON BACK

- Field reversible: Formed 22 ga. stainless steel.
- Door gaskets: Perimeter type, Santoprene with magnetic gasket.
- Rear Single Door has latch, 11ga. stainless steel hinges with 270° door swing and tempered glass window.
- Front Dutch Doors have full length pull handle and self-closing hinges. Top door has a tempered glass window.

RACK INSERT:

- Wire angles: (.306 dia.) nickel chrome plated steel; mounted on lift-off posts.



Scan QR code to view Spec Sheet, Operating Manual, Wiring Diagram or to call Customer Service.

If you need a QR reader visit your App Store on your Smartphone or Tablet.

CRES COR

5925 Heisley Road • Mentor, OH 44060-1833
Phone: 877/CRESCOR • Fax: 440/350-7267
www.crescor.com

© Crescent Metal Products, Inc. 2017 All rights reserved.

RACK INSERT (continued):

- Spaced on 4-1/2" centers; adjustable on 1-1/2" centers.
- Holds (24) 14-1/8" square pizza boxes.
- Wire shelves (12): Nickel chrome plated steel, 18" x 26".

POWER UNIT:

- Top mounted; removable with tools.
- Heater: 1850 Watts.
- Blowers (2) with intake guard.
- Thermostat: Electronic temperature control with digital temperature display. Display accurate to ±2°F.
- Power cord: permanent 10 ft., right angle plug.
- Switch: On/Off rocker type
- Internal vent fans.
- High limits.

POWER REQUIREMENTS:

- 2000 Watts, 120 Volts, 60 Hz., single phase. 16 Amp. 20 Amp service.

SHORT FORM SPECIFICATIONS

Cres Cor Insulated Pass-Thru Hot Stainless Steel Pizza Cabinet Model H138NPSCC3MQ. Cabinet 22 ga. stainless steel; stainless steel internal frame. Dutch doors front; single door on back, 22 ga. stainless steel. Fiberglass insulation in sides 2"; doors, top, base 1-1/2". Interior coved corners. 2000 Watt, 120 Volt power unit. (12) sets of wire angles on 4-1/2" centers; adjustable on 1-1/2" centers. One piece insulated base, .125 aluminum. 5" swivel modulus casters, Delrin bearings. Load capacity 250 lbs. each. 3-Year Parts / 1-Year Labor warranty. Provide the following accessories: ____ NSF, CSA-US, CSA-C listed.

In line with its policy to continually improve its products, CRES COR reserves the right to change materials and specifications without notice.

Made in America Since 1936