



**Cooking Performance Group CK-HPSU212
12" Step-Up Countertop Range / Hot Plate
with 2 High Output Burners - 60,000 BTU**

#351SRCPG12NL

FEATURES

- 2 independently-controlled high output 30,000 BTU burners
- Step-up design for easier access to rear pots and pans
- Heavy-duty cast iron trivets and a waste tray for easy cleanup
- Durable, all-stainless steel construction and adjustable feet to provide stability
- Field convertible to liquid propane, includes orifice

TECHNICAL DATA

Width	12 Inches
Depth	26 13/16 Inches
Height	18 15/16 Inches
Features	Step-Up
Installation Type	Countertop Freestanding
Number of Burners	2 Burners
Power Type	Field Convertible Natural Gas
Style	Step-Up
Total BTU	60000 BTU
Usage	Heavy Duty Standard Duty



CERTIFICATIONS



ETL
Sanitation

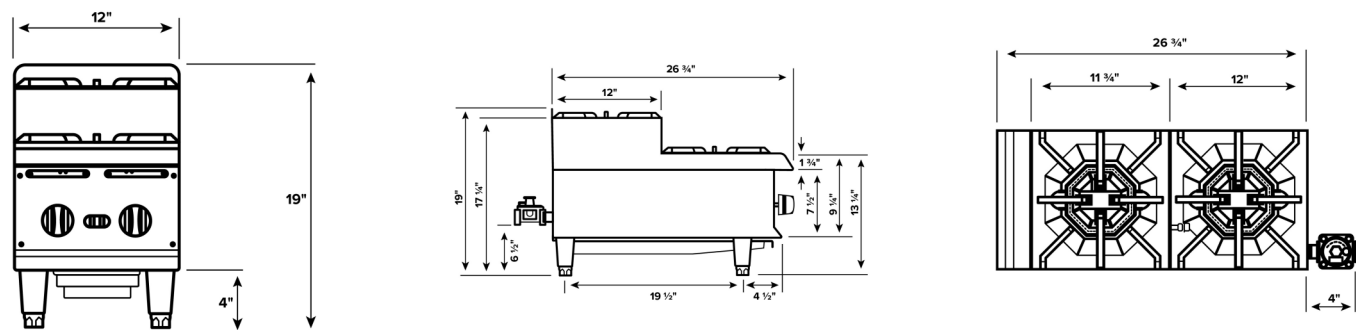


3/4" Gas Connection



ETL US & Canada


Plan View



Notes & Details

Boasting 2 powerful 30,000 BTU burners with standing pilots for instant ignition, this Cooking Performance Group CK-HPSU212 countertop range gives you the high performance cooking solution you need to quickly and easily prepare sauces, sides, and entrees! The heavy-duty cast iron trivets are oriented in a step-up alignment so that you can easily access pots and pans on the rear burner, and they also help protect the burners against clogs resulting from overflow.

This 2 burner countertop range features an all stainless steel construction to ensure long-lasting durability and easy cleaning, while a full width waste tray also helps expedite end-of-day cleaning. It ships ready to connect to a natural gas supply, but includes a liquid propane orifice kit for simple field conversion.

**WARNING:** This product can expose you to chemicals including lead, which are known to the State of California to cause cancer, birth defects, or other reproductive harm. For more information, go to www.p65warnings.ca.gov.