



Item #: 382PM1360 Project: _____

Qty: _____ Date: _____ Approval: _____

Carnival King PM1360 12 oz. Commercial Popcorn Machine / Popper - 120V, 1360W

Item #382PM1360

Technical Data

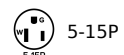
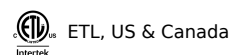
| | |
|-----------------------|---------------|
| Width | 17 3/4 Inches |
| Depth | 14 3/4 Inches |
| Height | 29 1/2 Inches |
| Amps | 11.3 Amps |
| Hertz | 60 Hz |
| Phase | 1 Phase |
| Voltage | 120 Volts |
| Wattage | 1360 Watts |
| 1 oz. Servings / Hour | 200 Servings |
| Capacity | 12 oz. |



Features

- Best value in the market; can draw a crowd and pay for itself in only a few hours
- Kettle makes 200 oz. of popcorn per hour, making it one of the most versatile poppers around
- Quick and easy operation; cabinet can hold up to 65 ounces of popcorn; ideal for mid-level demand
- Includes a popcorn scoop, measuring cups, and a removable crumb tray for convenience
- Boasts a durable stainless steel frame, a stainless steel 12 oz. kettle, and 1360W of popping power

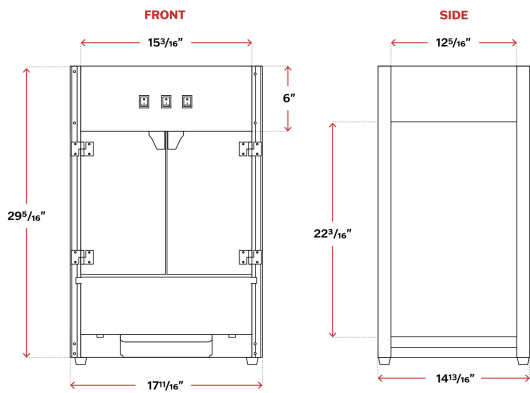
Certifications



Technical Data

| | |
|-----------------|-----------------------|
| Color | Red |
| Door Material | Plastic |
| Features | Removable Crumb Tray |
| Frame Material | Stainless Steel |
| Kettle Material | Stainless Steel |
| Kettle Size | 12 Ounces |
| Kettle Volume | Medium |
| Oil Dispensing | Manual / Pour In |
| Panel Material | Plastic |
| Plug Type | NEMA 5-15P |
| Power Type | Electric |
| Style | Counter |
| Type | Single Kettle Poppers |

Plan View




Notes & Details

For a commercial popcorn popper that can quickly produce bucket after bucket of fresh, buttery popcorn for hungry customers, look to the PM1360 12 oz. commercial popcorn machine / popper! Boasting 1360W of power, this machine will keep hot popcorn flowing as quickly as your customers can eat it up!

This popper is incredibly easy to use, with just three switches to control the unit: turn, heat, and warming. It contains a 12 oz. stainless steel kettle that only needs a few minutes to warm up, an ideal feature for medium-volume businesses. The larger kettle means there is less time needed to prepare another kettle and more time for interacting with customers. Plus, this popper can pay for itself in just a few hours, as the kettle produces up to 200 oz. of popcorn per hour, and the cabinet can hold up to 65 oz. of popcorn! Once the unit is finished cooking, the hot, finished popcorn falls to the popper's warm deck, where it's kept fresh until you're ready to serve. This unit will catch the eye of passing customers with its 60W warmer light, which brightly illuminates the finished popcorn for excellent merchandising.

Cleanup is just as simple as the popping process because the stainless steel kettle and crumb tray are removable for easy cleaning and maintenance, and the stainless steel frame can easily be wiped down. The front, back, and side see-through clear panels that make up the viewing area are all made of heavy-duty plastic for impressive durability, and the doors come standard with a magnetic latch for quick and easy operation. Two adjustable, non-marking feet with brakes are also included to keep your machine level on any surface.

This unit comes with a popcorn scoop and measuring cups to help make your popcorn sales soar on day one. A safety circuit breaker is also included to prevent motor burnout. This popper requires a 120V electrical connection.

 **WARNING:** This product can expose you to chemicals including lead, which are known to the State of California to cause cancer and birth defects or other reproductive harm. For more information, go to www.p65warnings.ca.gov.