



Item #: 382PD5G6

Project:

Qty:

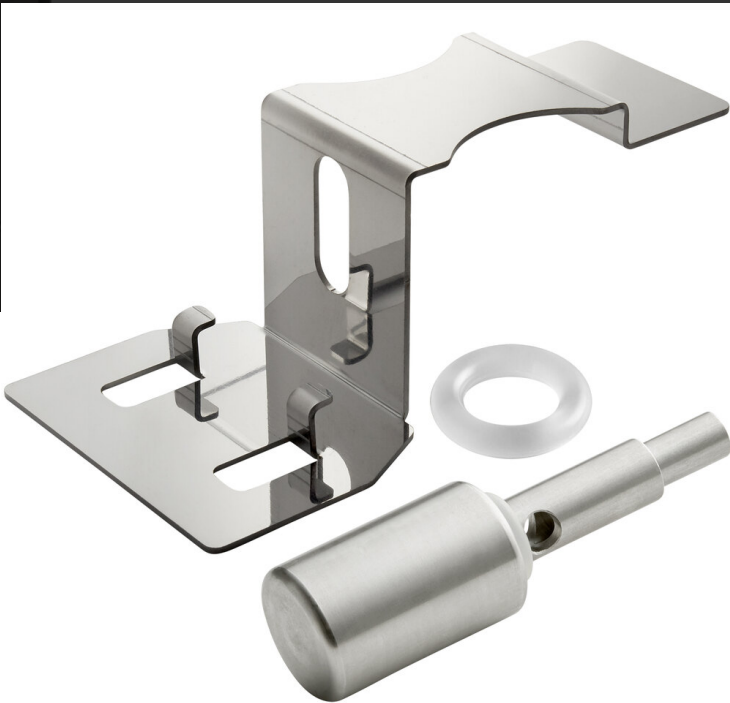
Date:

Approval:

# Carnival King 382PD5G6 Faucet and Push Lever Assembly for RBD3G and RBD5G Series Refrigerated Beverage Dispensers

Item #382PD5G6

Technical Data	
Type	Refrigeration Parts



## Features

- Direct replacement for original part
- Compatible with RBD3G and RBD5G series refrigerated beverage dispensers (sold separately)
- Allows the faucet to dispense product

## Notes & Details

This Carnival King 382PD5G6 faucet and push lever assembly is a direct replacement for the one that comes standard on RBD3G and RBD5G series refrigerated beverage dispensers (sold separately). If you need to replace both the faucet valve and the push lever, this part makes it convenient to do so. It includes a brand new faucet piston valve, a faucet valve O-ring, and a push lever too. Together, these parts make it easy to dispense cool, refreshing drinks while preventing drips and leaks when the machine is not in use.

**⚠ WARNING:** This product can expose you to chemicals including lead, which are known to the State of California to cause cancer and birth defects or other reproductive harm. For more information, go to [www.p65warnings.ca.gov](http://www.p65warnings.ca.gov).