



A WATTS Brand

# Navigator® Thermostatic Mixing Valve for Eyewash and Faucet

S19-2010

- 2 valves in 1: saves on installation time and space under the sink
- One cold water inlet, one hot water inlet
- Outlet for tempered water to faucet
- Outlet for tepid water to eyewash
- Eyewash valve meets ANSI/ISEA Z358.1
- ASSE 1070 and 1071 Certified
- 1/2" NPT connections on inlet and outlet
- 3/8" compression fitting to faucet included
- Reliable liquid-filled thermostat on eyewash valve
- Reliable wax-filled thermostat for faucet valve
- Check valves on supply inlets
- Adjustable set point within temperature range
- Accurate temperature control to within  $\pm 3^{\circ}\text{F}$
- Built-in cold water bypass on eyewash, assuring cold flow
- Positive shutoff of hot supply when cold supply is lost
- Dirt and lime resistant
- Factory assembled and tested
- Can be mounted in any orientation
- Covered by US Patent: US11920691B2

## System Specifications

### Maximum Operating Pressure

125 PSI (860 kPa)

### Hot Water Inlet Temperature

Maximum Temperature: 180°F (82°C)

Recommended Inlet Temperature: 120°F (49°C) to 140°F (60°C)

## Faucet Valve Specifications

### Temperature Range

Std. 95°F (35°C) to 120°F (49°C)

### Temperature Differential - Hot to Mix

10°F (5.6°C)

### Faucet Valve Flow Capacities – GPM

Mixing Center	Min. Flow	Pressure Drop – PSI							
Faucet	0.2	PSI	5	10	15	20	30	45	60
		GPM	1.4	2.0	2.5	2.9	3.5	4.3	5.0

### Faucet Valve Flow Capacities – L/Min

Mixing Center	Min. Flow	Pressure Drop – Bar							
Faucet	0.8	Bar	0.3	0.7	1.0	1.4	2.1	3.1	4.1
		L/Min	5.5	7.7	9.5	10.9	13.4	16.4	19.0



*This plumbing fixture is not intended to dispense water for human consumption through drinking or for preparation of food or beverages.*

Engineer's Approval \_\_\_\_\_



S19-2010

## Valve Models (Must select one)

Model	Description
S19-2010	Brass Emergency Fixture and Faucet Thermostatic Mixing Valve
S19-2010C	Chrome-Plated Emergency Fixture and Faucet Thermostatic Mixing Valve

## Eyewash Valve Specifications

### Temperature Range

Std. 65°F (18°C) to 90°F (32°C)

### Temperature Differential - Hot to Mix

20°F (11.1°C)

### Set Point

85°F (29°C)

### Eyewash Valve Flow Capacities – GPM

Mixing Center	Min. Flow	Pressure Drop – PSI							
Eyewash	1.5	PSI	5	10	15	20	30	45	60
		GPM	3.2	4.6	5.6	6.5	7.9	9.7	11.2
Cold Bypass Only		GPM	2.5	3.5	4.3	5.0	6.1	7.4	8.6

### Eyewash Valve Flow Capacities – L/Min

Mixing Center	Min. Flow	Pressure Drop – Bar							
Eyewash	5.7	Bar	0.3	0.7	1.0	1.4	2.1	3.1	4.1
		L/Min	12.3	17.3	21.2	24.5	30.0	36.8	42.5
Cold Bypass Only		L/Min	9.4	13.3	16.2	18.8	23.0	28.1	32.5

## Product Compliance

### Listed by IAPMO R&T to

- ASSE 1070/ASME A112.1070/CSA B125.70
- ASSE 1071
- Uniform Plumbing Code (UPC)
- National Plumbing Code of Canada
- International Plumbing Code (IPC)



### Listed by ASSE International to

- ASSE 1070
- ASSE 1071

### Listed by NSF International to

- NSF/ANSI 372



A WATTS Brand

# S19-2010 Navigator® Thermostatic Mixing Valve for Eyewash and Faucet

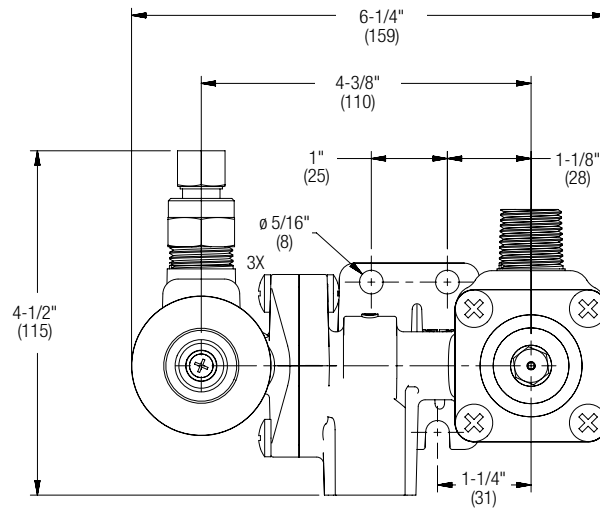
## Dimensions

(mm)

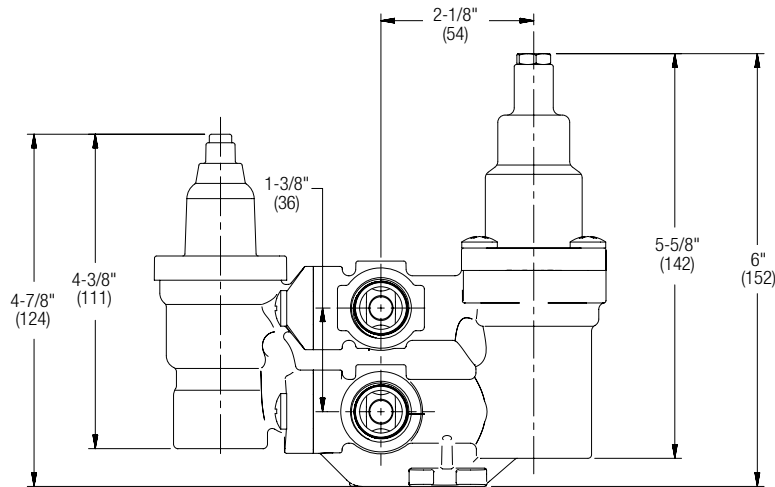
### Top View



All connections 1/2" NPT.



### Front View



### Side View

