



# BEVERAGE-AIR

3779 Champion Blvd., Winston-Salem, NC 27105  
1-888-845-9800 Fax# 1-336-245-6453  
<http://www.Beverage-Air.com>

**CUSTOMER'S CHOICE FOR A HOT KITCHEN**  
**Tested & Certified to Ambient Class of 100°F**

Item No. \_\_\_\_\_  
Quantity \_\_\_\_\_

**WORK TOP  
REFRIGERATORS  
AND FREEZER  
WORKTOP FREEZER  
32" BASE MODEL SERIES**

**MODELS:  
WTR41  
WTR46A  
WTR67A  
WTR93A  
WTR119A  
WTF67A**

## **3 Year Parts/Labor Warranty Additional 2 Year Compressor Warranty**

### **WTR AND WTF—SERIES WORKTOP UNITS**

Select from 5 standard sizes in widths of 41" (1 door), 46" (1 door), 67" (2 door), 93" (3 door), and 119" (4 door). Working height\* is 35 1/2" with units installed on 6 inch casters (2 with brakes).

### **CABINET CONSTRUCTION**

Heavy duty construction includes stainless steel on front, sides, door(s) and grille. Worktop is stainless steel with built-in back-splash. Cabinet back and bottom are galvanized steel. Interior liner is made of aluminum for longer lasting corrosion protection. Interior thermometer is standard.

Cabinets are insulated with foamed-in-place polyurethane insulation of 2" minimum thickness. Work tops are 2 1/2". Doors are mounted to cabinet on self-closing, cartridge style hinges with 120° stay open feature. Door openings include low wattage, anti-condensate heaters (WTF67A only). A plug-in type vinyl magnetic gasket is attached to each door for positive seal. Convenient, contoured, pull handle is made of black anodized aluminum. Interior arrangement includes 2 steel wire epoxy coated shelves behind each door, adjustable in 1/2 inch increments.

### **REFRIGERATION**

Balanced refrigeration systems used in all 5 sizes of self-contained refrigerated worktops provide high humidity storage of product at 35°F to 38°F. One size worktop freezer WTF67 holds product at 0°F and below. Unit is equipped with time activated, temperature terminated, electric defrost. Refrigerants include CFC-free R134a in refrigerators and 404A in freezers.

### **ELECTRICAL**

Units wired at factory and ready for connection to a 115/60/1 phase, 15 amp dedicated outlet.

### **SPECIAL FEATURES**

- 6" casters, two with brakes standard.
- Optional 6" legs or 3" casters available

**\*Note:** Overall heights of casters may vary with different types of casters depending upon caster manufacturer designations.



**WTR46**



**WTR67/WTF67**

### **ELECTRICAL CONNECTION**

Units pre-wired at factory and include 8' long cord and plug set.



115/60/1  
NEMA-5-15P

Available From:



Model Specified \_\_\_\_\_

Store# \_\_\_\_\_

Location \_\_\_\_\_

Quantity \_\_\_\_\_



**BEVERAGE-AIR**

**Work Top Refrigerators and Freezer**

Models: WTR41, WTR46A, WTR67A, WTR93A, WTR119A, WTF67A

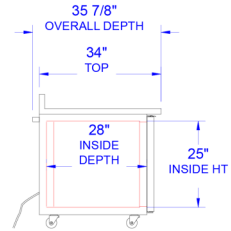
MODEL	WTR41	WTR46A	WTR67A	WTR93A	WTR119A	WTF67A
<b>EXTERNAL DIMENSIONAL DATA</b>						
Length Overall (inches)	41"	46"	67"	93"	119"	67"
Length Overall (mm)	1041	1168	1702	2362	3023	1702
Depth Overall (inches) - Less handle	32"	32"	32"	32"	32"	32"
Depth Overall (mm) - Less handle	813	813	813	813	813	813
Height Overall—on 6" casters (inches)*	39 1/2"	39 1/2"	39 1/2"	39 1/2"	39 1/2"	39 1/2"
Height Overall—on 6" casters (mm)*	1003	1003	1003	1003	1003	1003
Depth with Door Open 90 °	55 3/8"	55 3/8"	55 3/8"	55 3/8"	55 3/8"	55 3/8"
Clear Door Opening (inches)	21 1/2" x 23 1/2"	21 1/2" x 23 1/2"	21 1/2" x 23 1/2"	21 1/2" x 23 1/2"	21 1/2" x 23 1/2"	21 1/2" x 23 1/2"
Number of doors	1	1	2	3	4	2
<b>INTERNAL DIMENSIONAL DATA</b>						
NET Capacity (cubic ft.)	8.3	16.7	27	29.7	52.5	27
NET Capacity (Liters)	235	473	765	841	1487	765
Internal Length Overall (inches)	19"	22"	48"	74"	100 1/8"	48"
Internal Length Overall (mm)	483	559	1219	1880	2543	1219
Internal Depth Overall (inches)	28"	28"	28"	28"	28"	28"
Internal Depth Overall (mm)	711	711	711	711	711	711
Internal Height Overall (inches)	25"	25"	25"	25"	25"	25"
Internal Height Overall (mm)	635	635	635	635	635	635
Number of shelves	2	2	4	6	8	4
<b>ELECTRICAL DATA</b>						
Full Load Amperes 115/60/1	6.3	6.3	6.3	8.6	8.6	8.6
<b>ENERGY CONSUMPTION (KWH)</b>						
	n/a	2.81	2.56	3.49	3.91	15.3
<b>REFRIGERATION DATA</b>						
Horsepower	1/4	1/4	1/4	1/3	1/3	3/4
<b>WEIGHT DATA</b>						
Gross Weight (Crated lbs)	272	302	413	546	675	435
Gross Weight (Crated kg)	123	136	187	248	306	197

\*Note: Overall heights of casters may vary with different types of casters depending upon caster manufacturer designations.

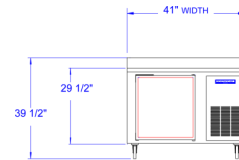


**PLAN VIEWS**

**COMMON END VIEW**

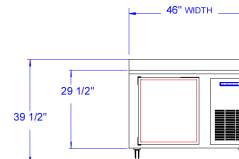


LEFT SIDE VIEW



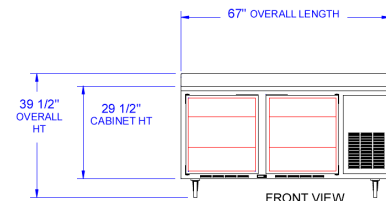
FRONT VIEW

**WTR41**



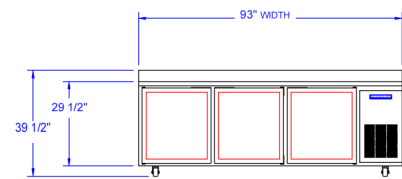
FRONT VIEW

**WTR46A**



FRONT VIEW

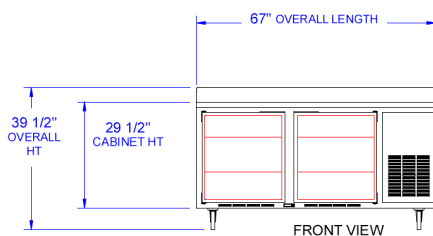
**WTR67A**



FRONT VIEW

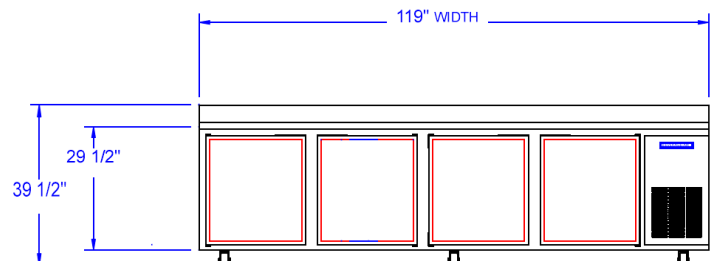
**WTR93A**

**WTF67A**



FRONT VIEW

**WTR119A**



FRONT VIEW

**BEVERAGE-AIR® CORPORATION**

3779 Champion Blvd. • Winston-Salem, NC 27105 USA • (336) 245-6400 • Fax (336) 245-6453 • (888) 845-9800 • www.beverage-air.com

Specifications are subject to change without prior notice. 12/16