

366 SERIES



• Type 1AA Step Ladder

375 lbs. capacity

• Strongest Side Rail Available

Our non-conductive full channel side rails are 50% thicker in the flange and radius than competitive models for the strongest stepladder rail available.

• Solid Aluminum Rivet Construction

Solid aluminum rivet construction at critical stress points is stronger than tubular steel rivets and results in a longer service life for your ladder.

• Bauer Boot Shoes

Our innovative Boot Shoes provide complete side rail protection and greater surface contact for increased slip resistance over competitive models.

• Reinforcement Sleeves

Reinforcement sleeves at spreader mount points provide superior strength and durability

• Formed, Zinc-plated Steel Braces

Formed, zinc-plated steel braces under every step means less corrosion and a longer service life for your ladder.

• Molded Top Cap

The uniquely design in our Molded Top Cap holds tools, fasteners and other small impact resistance.

• More Gentle Climbing Angle

A 20° climbing angle reduces worker fatigue and is more comfortable to climb than our competition's ladder.

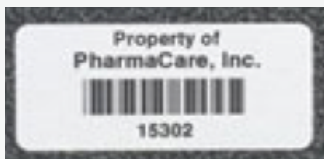


Part #	Size	Highest Standing Level	Bottom Width	Approx. Spread	Approximate Weight	Approximate Cube
36603	3'	1'0"	17 3/4"	26 1/2"	15 lbs.	2.1
36604	4'	2'0"	19 1/4"	34 1/2"	21 lbs.	3.0
36605	5'	2'9"	20 3/4"	42"	25 lbs.	4.1
36606	6'	3'9"	22 1/4"	49 1/2"	32 lbs.	5.2
36607	7'	4'9"	23 3/4"	58 1/2"	35 lbs.	6.4
36608	8'	5'9"	25 1/4"	68 1/4"	40 lbs.	7.8
36610	10'	7'6"	28 1/4"	77 1/4"	50 lbs.	10.9
36612	12'	9'6"	31 1/4"	92 3/4"	60 lbs.	14.0

Standard Features	Bauer 366	Werner 7400	Louisville FS1100HD
Type IAA 375 lb. Rated	✓	✓	✓
Non-conductive Side Rails	✓	✓	✓
3/16" Flange and Radius	✓		
Solid Aluminum Rivet Construction	✓		
Copolymer Molded Top Cap	✓		✓
20° Climbing Angle	✓		
Boot Shoe Design w/Wear Indicator	✓		
Rail Reinforcement Sleeves	✓		✓
Heavy-duty Pinch Resistant Internal Spreaders	✓	✓	✓
Full Compliment of Back Cross Braces with Formed Steel Supports	✓		✓
Steel Reinforcement Plates	✓		
Formed Steel Double-Support Design Under Bottom Step	✓		✓
Formed Steel Supports Under Every Step	✓		✓
Zinc-plated Steel Hardware	✓		
Safety Yellow Side Rails	✓		✓

ADD ON OPTIONS:**FIBERMARK LOGO RAIL IMPRINTING**

Get your company's logo imprinted into the fiberglass side rail. The logo can not be removed- this is a proven method of deterring equipment theft and increasing your company's exposure.

ASSET MANAGEMENT TAGS

Serial number ID systems to effectively track inspections and repairs as well as the length of time a ladder has been in service.

**SUPERIOR SERVICE!**

Bauer manufactures ladders strictly for professional users, not the home centers! We stock what you order and ship quick. Standard lead times are 2-3 days, not weeks! We ship quick and typically damage free! Bauer over-packages our shipments, decreasing the likelihood of aggravating freight claims.

⚠ WARNING: This product can expose you to chemicals including Lead, Acrylonitrile, Styrene, Vinyl Chloride, Chromium, and other chemicals that are known to the State of California to cause cancer, birth defects or other reproductive harm. For more information, go to www.P65Warnings.ca.gov.



2540 Progress Drive
Wooster, Ohio 44691

Tel: 330-262-3070

E-mail: sales@ladder.com
Web: www.bauerladder.com

