



AX-CL10D

**Full Size Combi Oven
Digital Controls - Reversing Fans - 10 Shelves**



		Features
Digital controls	Time, temperature, steam, 4 cooking cycles for each program, automatic pre-heating	<ul style="list-style-type: none"> • Advanced airflow design • Automatic reversing fans - 2 speeds • Digital programmable controls / 99 programs / automatic pre-heating / 4 cooking cycles for each program • Interior halogen light • Includes electro valve for direct water connection • Core food probe included / Delta T Cooking • Adjustable steam percentage (0-100%) • Adjustable exhaust flue • Heavy duty stainless steel body construction • "Cold Door" design with double pane glass • Reinforced door hinges • Oven cavity is insulated with ultra-high temperature fiberglass insulation • 4 Stainless steel wire shelves • Micro safety switch shuts oven off when door is open • Self-cleaning cycle • Ovens can be stacked (kit required) • Warranty: 2 year parts & 1 year labor exclusive of lights, gaskets and glass (60 days)
Load capacity	10 shelves for full size sheet pans	
High speed reversing fans	3 (3,200 rpm)	
Space between shelves	3.14" (80 mm)	
Power requirements	20,000 Watts / 208-240V/60/3 Oven supplied with power cord only / no plug	
Temperature	86° - 500° F	
Equipped with	16 hour timer Signal at end of cycle	
Cavity size (inches)	28.30 x 21.20 x 37.30 (WxDxH)	
Unit dimensions (inches)	38.59 x 35.04 x 47.25 (WxDxH)	
Shipping dimensions (inches)	41.35 x 40.55 x 52.37 (WxDxH)	
Net / Ship weight	313 lb / 353 lb	

COMBI ACCESSORIES



AX-C10ST OVEN STAND

- Heavy duty oven stand with tray support
- Slides accommodate full size pans
- Dimensions: 33.47" x 24.40" x 31.50"
- Heavy duty stainless steel (assembly required)
- Ship weight: 54 lbs
- Shipping dimensions: 38.60" x 28.35" x 8.66"



R15 CASTERS

Set of 4 (2 with brakes)



STACKING KIT

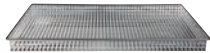


WATER SOFTENER KIT



CLEANING DETERGENT

COMBI OVEN TRAYS



**124-GP31
FRY GRID**



**124-GP32
GRIDDLE GRID**



**124-GP28
GRANITE
MULTI-BAKING
TRAY**



**124-GP36
MULTIFUNCTIONAL
NON STICK
ALUMINUM TRAY**



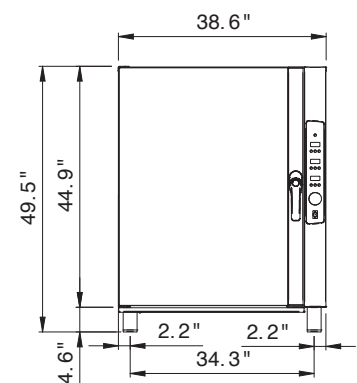
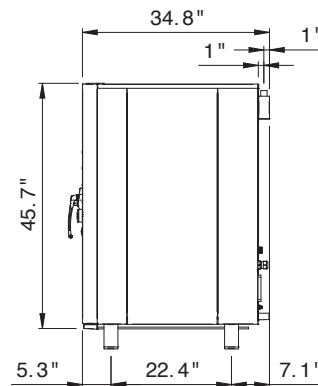
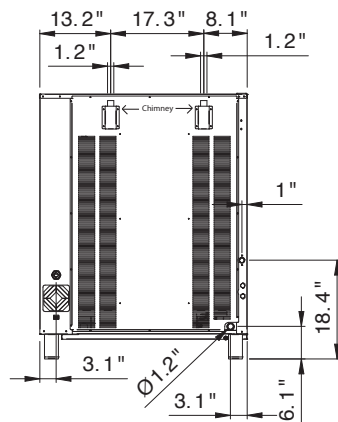
**124-PT12
60X40
ALUMINUM
PERFORATED TRAY**



**124-PT13
60X40
ALUMINUM
TRAY**

LINE DRAWINGS

AX-CL10D



514-737-9701 786-600-4687

TOLL FREE: 888-275-4538

TOLL FREE: 844-218-8477

5659 ROYALMOUNT AVE, MONTREAL, QC, CANADA H4P2P9

12000 BISCAYNE BLVD, SUITE #108, MIAMI, FL, USA 33181

MVPGROUPCORP.COM SALES@MVPGROUPCORP.COM