

Item #: 360BCDI60W Project: _____

Qty: _____ Date: _____ Approval: _____

Avantco BCDI-60 60" White Curved Refrigerated Drop-In Countertop Bakery Display Case

Item #360BCDI60W



Technical Data

| | |
|-------------------|---------------|
| Width | 60 Inches |
| Depth | 22 1/2 Inches |
| Height | 27 3/8 Inches |
| Power Cord Length | 59 Inches |
| Cutout Width | 56 7/8 Inches |
| Interior Width | 58 1/2 Inches |
| Cutout Depth | 20 1/4 Inches |
| Interior Depth | 19 1/3 Inches |
| Cutout Height | 7 3/8 Inches |
| Interior Height | 16 1/5 Inches |

Features

- Curved glass provides increased visibility
- LED lighting is designed to show off your chilled baked goods
- Provides 2 interior shelves to organize your display
- Refrigeration is located below the countertop for better visibility over the case
- Uses R-290 refrigerant, 115V

Certifications



ETL Sanitation



ETL, US

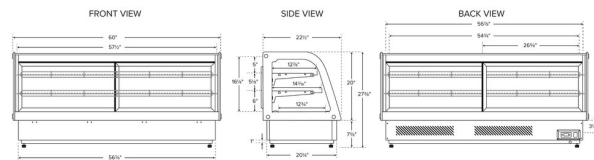


5-15P

Technical Data

| | |
|-----------------------------|-------------------------------------|
| Amps | 4.9 Amps |
| Hertz | 60 Hz |
| Phase | 1 Phase |
| Voltage | 115 Volts |
| Access Type | Doors |
| BTU Per Hour | 1232 BTU |
| Capacity | 6.99 cu. ft. |
| Capacity (per Shelf) | 55 lb. |
| Color | White |
| Compressor Location | Bottom Mounted |
| Defrost Type | Automatic |
| Display Case Type | Refrigerated |
| Door Style | Sliding |
| Exterior Material | Glass Plastic Stainless Steel |
| Features | LED Lighting |
| Glass Style | Curved |
| Horsepower | 1/3 hp |
| Installation Type | Countertop Drop-In |
| Insulation Material | EPS |
| Interior Material | Plastic Stainless Steel |
| Maximum Ambient Temperature | 86 Degrees F |
| Number of Shelves | 2 Shelves |
| Plug Type | NEMA 5-15P |
| Refrigerant Capacity | 3.2 oz. |
| Refrigerant Type | R-290 |
| Shelf Material | Chrome Plated |
| Temperature Controller Type | Digital Thermostat |
| Temperature Range | 32 - 40 Degrees F |
| Type | Countertop Bakery Cases |

Plan View





Notes & Details

Show off your delectable baked goods with this Avantco BCDI-60 60" white curved refrigerated drop-in countertop bakery display case. This countertop unit is made to allow you to place your baked goods in a convenient location where they can merchandise themselves to hungry customers. Its curved glass provides increased visibility, while its stainless steel frames ensure durability. With its minimalist look, this unit will go great in your bakery, grocery store, or cafe.

This bakery display case features LED lighting that is designed to show off your chilled baked goods! With a proper display, your bakery items can merchandise themselves and increase impulse sales. The case also has two interior wire shelves, and the case is made with four glass sides to provide an unobstructed view of your food. It also has a rear sliding glass access door to ensure customers can see the case's contents from any angle. Since the door slides open, it won't intrude into walkways making this case perfect for small spaces. Thanks to the refrigeration that's located below the countertop, your customers will always have clear visibility over the case to your tempting desserts!

This model uses R-290 refrigerant to keep the interior temperatures at safe levels. This specialized refrigerant has an ozone depletion potential (ODP) of 0 and a global warming potential (GWP) of 3. It requires a 115V electrical connection for operation.

⚠ WARNING: This product can expose you to chemicals including lead, which are known to the State of California to cause cancer and birth defects or other reproductive harm. For more information, go to www.p65warnings.ca.gov.