

Item #: 360BCDI28W Project: _____

Qty: _____ Date: _____ Approval: _____

Avantco BCDI-28 27 1/2" White Curved Refrigerated Drop-In Countertop Bakery Display Case

Item #360BCDI28W



Technical Data

Width	27 1/2 Inches
Depth	22 1/2 Inches
Height	27 3/8 Inches
Power Cord Length	59 Inches
Bottom Shelf Width	25 Inches
Cutout Width	24 1/2 Inches
Interior Width	26 1/5 Inches
Top Shelf Width	25 Inches
Bottom Shelf Depth	14 2/5 Inches
Cutout Depth	20 1/4 Inches

Features

- Curved glass provides increased visibility
- LED lighting is designed to show off your chilled baked goods
- Provides 2 interior shelves to organize your display
- Refrigeration is located below the countertop for better visibility over the case
- Uses R-290 refrigerant, 1/4HP, 115V

Certifications



ETL Sanitation



ETL, US



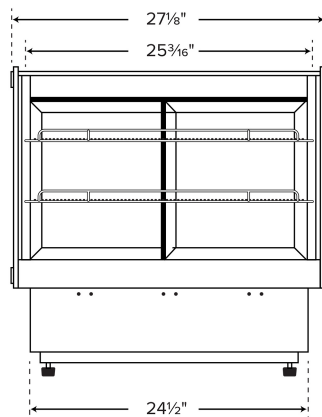
5-15P

Technical Data

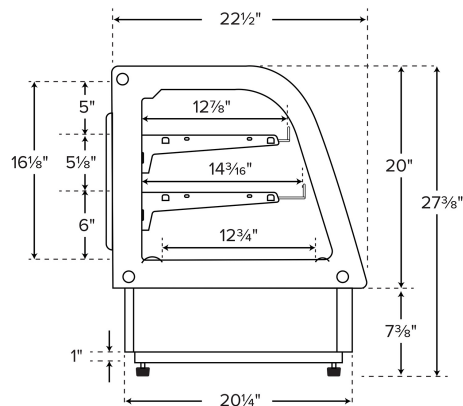
Interior Depth	19 1/3 Inches
Top Shelf Depth	13 1/5 Inches
Cutout Height	7 3/8 Inches
Interior Height	16 1/5 Inches
Amps	2.8 Amps
Hertz	60 Hertz
Phase	1 Phase
Voltage	115 Volts
Access Type	Doors
BTU Per Hour	1232 BTU
Capacity	3.1 cu. ft.
Color	White
Compressor Location	Bottom Mounted
Display Case Type	Refrigerated
Door Style	Sliding
Door Type	Glass
Features	LED Lighting
Glass Style	Curved
Horsepower	1/3 HP
Individual Shelf Capacity	33 lb.
Installation Type	Countertop Drop In
Number of Doors	2 Doors
Number of Shelves	2 Shelves
Plug Type	NEMA 5-15P
Refrigerant Capacity	1.9 oz.
Refrigerant Type	R-290
Service Type	Full Service
Temperature Range	32 - 40 Degrees F
Type	Countertop Bakery Cases

Plan View

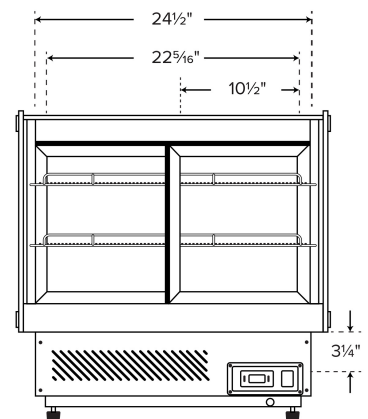
FRONT VIEW



SIDE VIEW



BACK VIEW





Notes & Details

Show off your delectable baked goods with this Avantco BCDI-28 27 1/2" white curved refrigerated drop-in countertop bakery display case. This countertop unit is made to allow you to place your baked goods in a convenient location where they can merchandise themselves to hungry customers. Its curved glass provides increased visibility, while its stainless steel frame ensures durability. With its minimalist look, this unit will go great in your bakery, grocery store, or cafe.

This bakery display case features LED lighting that is designed to show off your chilled baked goods! With a proper display, your bakery items can merchandise themselves and increase impulse sales. The case also has two interior wire shelves, and the case is made with four glass sides to provide an unobstructed view of your food. It also has a rear sliding glass access door to ensure customers can see the case's contents from any angle. Since the door slides open, it won't intrude into walkways making this case perfect for small spaces. Thanks to the refrigeration that's located below the countertop, your customers will always have clear visibility over the case to your tempting desserts! Plus, it can also be used as a standard countertop unit with its feet.

This model uses R-290 refrigerant to keep the interior temperatures at safe levels. This specialized refrigerant has an ozone depletion potential (ODP) of 0 and a global warming potential (GWP) of 3. It requires a 115V electrical connection for operation.

⚠ WARNING: This product can expose you to chemicals including lead, which are known to the State of California to cause cancer, birth defects, or other reproductive harm. For more information, go to www.p65warnings.ca.gov.